



# SZABO SCANDIC

Part of Europa Biosite

## Produktinformation



Forschungsprodukte & Biochemikalien



Zellkultur & Verbrauchsmaterial



Diagnostik & molekulare Diagnostik



Laborgeräte & Service

Weitere Information auf den folgenden Seiten!  
See the following pages for more information!



### Lieferung & Zahlungsart

siehe unsere [Liefer- und Versandbedingungen](#)

### Zuschläge

- Mindermengenzuschlag
- Trockeneiszuschlag
- Gefahrgutzuschlag
- Expressversand

### SZABO-SCANDIC HandelsgmbH

Quellenstraße 110, A-1100 Wien

T. +43(0)1 489 3961-0

F. +43(0)1 489 3961-7

[mail@szabo-scandic.com](mailto:mail@szabo-scandic.com)

[www.szabo-scandic.com](http://www.szabo-scandic.com)

[linkedin.com/company/szaboscandic](https://www.linkedin.com/company/szaboscandic) 

# CAP-D3 Antibody

Rabbit Polyclonal

Antigen Affinity Purified

Protein ID NP\_056076.1

Catalog No. A300-604A

GeneID 23310

Lot No. A300-604A-4



<b>APPLICATIONS</b>	WB, IP
<b>SPECIES REACTIVITY</b>	Human
<b>AMOUNT</b>	100 µl
<b>CONCENTRATION</b>	200 µg/ml
<b>STORAGE/SHELF LIFE</b>	2 – 8° C / 1 year from date of receipt
<b>PHYSICAL STATE</b>	Liquid
<b>BUFFER</b>	Tris-buffered Saline containing 0.1% BSA and 0.09% Sodium Azide
<b>ISOTYPE</b>	IgG
<b>ORIGIN</b>	USA
<b>PRODUCTION PROCEDURES</b>	Antibody was affinity purified using an epitope specific to CAP-D3 immobilized on solid support.

The epitope recognized by A300-604A maps to a region between residue 1450 and the C-terminus (residue 1498) of human Chromosome-Associated Protein D3 using the numbering given in entry NP\_056076.1 (GeneID 23310).

Immunoglobulin concentration was determined by extinction coefficient: absorbance at 280 nm of 1.4 equals 1.0 mg of IgG.

**APPLICATIONS** Centrifuge tube to remove product from lid. Optimal working dilutions should be determined experimentally by the investigator. Prepare working dilution immediately before use.

Western Blot 1:2,000 – 1:10,000

Immunoprecipitation 2 – 10 µg/mg lysate

**APPLICATION NOTES** Western blot of immunoprecipitates performed using Normal Pig Serum (Cat. No. S100-020), Goat anti-Rabbit Light Chain HRP Conjugate (Cat. No. A120-113P) and 4-8% SDS-PAGE (link to IP-western blot protocol in Additional Info section below).

Western blot of lysates performed using standard western blot reagents and 4-8% SDS-PAGE.

**ADDITIONAL INFO** <https://www.bethyl.com/product/A300-604A>

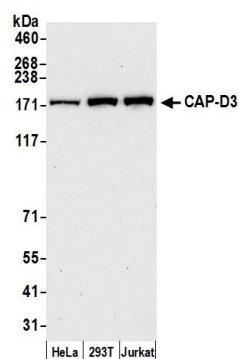
Use the link above to view SDS, a current list of citations, and other product specific information.

IP-western blot protocol [https://www.bethyl.com/content/protocol\\_IP\\_WB](https://www.bethyl.com/content/protocol_IP_WB)

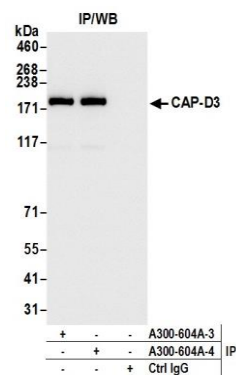
This document certifies that this product has met all of the quality control standards defined by Bethyl Laboratories, Inc.

Eric McIntush, PhD | Chief Scientific Officer

Date: September 18, 2019



**Detection of human CAP-D3 by western blot.** *Samples:* Whole cell lysate (50  $\mu$ g) from HeLa, 293T, and Jurkat cells prepared using NETN lysis buffer. *Antibody:* Affinity purified rabbit anti-CAP-D3 antibody A300-604A (lot A300-604A-4) used for WB at 0.04  $\mu$ g/ml. *Detection:* Chemiluminescence with an exposure time of 30 seconds.



**Detection of human CAP-D3 by western blot of immunoprecipitates.** *Samples:* Whole cell lysate (1.0 mg per IP reaction; 20% of IP loaded) from 293T cells prepared using NETN lysis buffer. *Antibodies:* Affinity purified rabbit anti-CAP-D3 antibody A300-604A (lot A300-604A-4) used for IP at 6  $\mu$ g per reaction. CAP-D3 was also immunoprecipitated by a previous lot of this antibody (lot A300-604A-3). For blotting immunoprecipitated CAP-D3, A300-604A was used at 0.2  $\mu$ g/ml. *Detection:* Chemiluminescence with an exposure time of 1 second.