



SZABO SCANDIC

Part of Europa Biosite

Produktinformation



Forschungsprodukte & Biochemikalien



Zellkultur & Verbrauchsmaterial



Diagnostik & molekulare Diagnostik



Laborgeräte & Service

Weitere Information auf den folgenden Seiten!
See the following pages for more information!



Lieferung & Zahlungsart

siehe unsere [Liefer- und Versandbedingungen](#)

Zuschläge

- Mindermengenzuschlag
- Trockeneiszuschlag
- Gefahrgutzuschlag
- Expressversand

SZABO-SCANDIC HandelsgmbH

Quellenstraße 110, A-1100 Wien

T. +43(0)1 489 3961-0

F. +43(0)1 489 3961-7

mail@szabo-scandic.com

www.szabo-scandic.com

[linkedin.com/company/szaboscandic](https://www.linkedin.com/company/szaboscandic) 

CAP-G2 Antibody

Rabbit Polyclonal

Antigen Affinity Purified

Protein ID AAH43404.1

Catalog No. A300-605A

GeneID 54892

Lot No. A300-605A-4

APPLICATIONS WB, IP

SPECIES REACTIVITY Human

AMOUNT 100 µl

CONCENTRATION 200 µg/ml

STORAGE/SHELF LIFE 2 – 8°C / 1 year from date of receipt

PHYSICAL STATE Liquid

BUFFER Tris-buffered Saline containing 0.1% BSA and 0.09% Sodium Azide

ISOTYPE IgG

ORIGIN USA

PRODUCTION PROCEDURES Antibody was affinity purified using an epitope specific to CAP-G2 immobilized on solid support.

The epitope recognized by A300-605A maps to a region between residue 1100 and the C-terminus (residue 1143) of human Chromosome-Associated Protein G2 using the numbering given in entry AAH43404.1 (GeneID 54892).

Immunoglobulin concentration was determined by extinction coefficient: absorbance at 280 nm of 1.4 equals 1.0 mg of IgG.

APPLICATIONS Centrifuge tube to remove product from lid. Optimal working dilutions should be determined experimentally by the investigator. Prepare working dilution immediately before use.

Western Blot 1:2,000 – 1:10,000

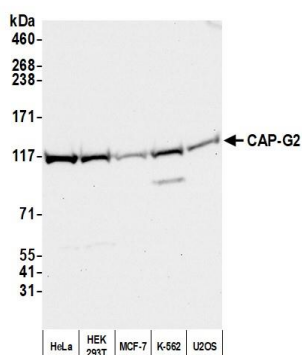
Immunoprecipitation 2 – 10 µg/mg lysate

ADDITIONAL INFO <https://www.bethyl.com/product/A300-605A>

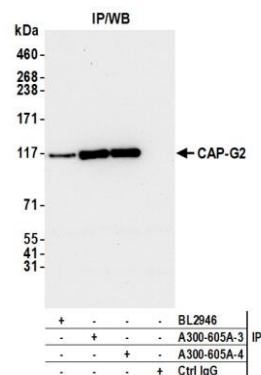
Use the link above to view SDS, a current list of citations, and other product specific information.

IP-western blot protocol: https://www.bethyl.com/content/protocol_IP_WB

This document certifies that this product has met all of the quality control standards defined by Bethyl Laboratories, Inc.
Michael Spencer, PhD Date: June 23, 2022



Detection of human CAP-G2 by western blot. *Samples:* Whole cell lysate (50 µg) from HeLa, HEK293T, MCF-7, K-562, and U2OS cells prepared using NETN lysis buffer. *Antibody:* Affinity purified rabbit anti-CAP-G2 antibody (A300-605A lot 4) used for WB at 0.1 µg/ml. *Detection:* Chemiluminescence with an exposure time of 10 seconds.



Detection of human CAP-G2 by western blot of immunoprecipitates. *Samples:* Whole cell lysate (1.0 mg per IP reaction; 20% of IP loaded) from HeLa cells prepared using NETN lysis buffer. *Antibodies:* Affinity purified rabbit anti-CAP-G2 antibody (A300-605A lot 4) used for IP at 6 µg per reaction. CAP-G2 was also immunoprecipitated by a previous lot of this antibody (A300-605A lot 3) and a second antibody against a different epitope of CAP-G2 (BL2946). For blotting immunoprecipitated CAP-G2, A300-605A was used at 0.1 µg/ml. *Detection:* Chemiluminescence with an exposure time of 10 seconds.