



SZABO SCANDIC

Part of Europa Biosite

Produktinformation



Forschungsprodukte & Biochemikalien



Zellkultur & Verbrauchsmaterial



Diagnostik & molekulare Diagnostik



Laborgeräte & Service

Weitere Information auf den folgenden Seiten!
See the following pages for more information!



Lieferung & Zahlungsart

siehe unsere [Liefer- und Versandbedingungen](#)

Zuschläge

- Mindermengenzuschlag
- Trockeneiszuschlag
- Gefahrgutzuschlag
- Expressversand

SZABO-SCANDIC HandelsgmbH

Quellenstraße 110, A-1100 Wien

T. +43(0)1 489 3961-0

F. +43(0)1 489 3961-7

mail@szabo-scandic.com

www.szabo-scandic.com

[linkedin.com/company/szaboscandic](https://www.linkedin.com/company/szaboscandic) 

MafA Antibody

Rabbit Polyclonal

Antigen Affinity Purified

Catalog No. A300-611A-T

Lot No. A300-611A-T-3

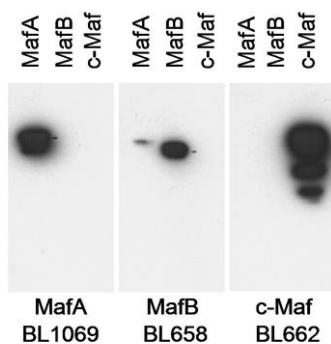
Protein ID NP_919331.1

GeneID 378435



| | |
|------------------------------|--|
| APPLICATIONS | WB |
| SPECIES REACTIVITY | Mouse |
| PRESUMED REACTIVITY | Based on 100% sequence identity, this antibody is predicted to react with Human |
| AMOUNT | 20 μ l (2 blots) |
| CONCENTRATION | 500 μ g/ml |
| STORAGE/SHELF LIFE | 2 - 8° C / 1 year from date of receipt |
| PHYSICAL STATE | Liquid |
| BUFFER | Tris-buffered Saline containing 0.1% BSA and 0.09% Sodium Azide |
| ISOTYPE | IgG |
| ORIGIN | USA |
| PRODUCTION PROCEDURES | Antibody was affinity purified using the peptide immobilized on solid support. The epitope recognized by A300-611A-T maps to a region between residue 300 and the C-terminus (residue 359) of mouse v-maf musculoaponeurotic fibrosarcoma oncogene homolog A using the numbering given in entry NP_919331.1 (GeneID 378435). |
| APPLICATIONS | Centrifuge tube to remove product from lid. Optimal working dilutions should be determined experimentally by the investigator. Prepare working dilution immediately before use. Western Blot 1:1000 |
| APPLICATION NOTES | Western blot of immunoprecipitates performed using Normal Pig Serum (Cat. No. S100-020), Goat anti-Rabbit Light Chain HRP Conjugate (Cat. No. A120-113P) and 4-20% SDS-PAGE (link to IP-western blot protocol in Additional Info section below). Western blot of lysates performed using standard western blot reagents and 4-20% SDS-PAGE. |
| ADDITIONAL INFO | https://www.bethyl.com/product/A300-611A-T Use the link above to view SDS, a current list of citations, and other product specific information. IP-western blot protocol: https://www.bethyl.com/content/protocol_IP_WB |

This document certifies that this product has met all of the quality control standards defined by Bethyl Laboratories, Inc.
Eric McIntush, PhD | Chief Scientific Officer Date: June 21, 2019

**Detection of MafA, MafB and cMaf by western blot.**

Samples: Nuclear extract (6 μ g) from HeLa cells transfected with MafA, MafB or cMaf expression constructs.

Antibodies: Affinity purified anti-MafA antibody BL1069 (Cat. No. A300-611A-T), anti-MafB Antibody (Cat. No. A300-612A) or anti-c-Maf antibody BL662 (Cat. No. A300-613A). Each antibody was used for WB at 1:1000.

Detection: Chemiluminescence with a 5 second exposure.