



SZABO SCANDIC

Part of Europa Biosite

Produktinformation



Forschungsprodukte & Biochemikalien



Zellkultur & Verbrauchsmaterial



Diagnostik & molekulare Diagnostik



Laborgeräte & Service

Weitere Information auf den folgenden Seiten!
See the following pages for more information!



Lieferung & Zahlungsart

siehe unsere [Liefer- und Versandbedingungen](#)

Zuschläge

- Mindermengenzuschlag
- Trockeneiszuschlag
- Gefahrgutzuschlag
- Expressversand

SZABO-SCANDIC HandelsgmbH

Quellenstraße 110, A-1100 Wien

T. +43(0)1 489 3961-0

F. +43(0)1 489 3961-7

mail@szabo-scandic.com

www.szabo-scandic.com

[linkedin.com/company/szaboscandic](https://www.linkedin.com/company/szaboscandic) 

MafA Antibody

Rabbit Polyclonal

Antigen Affinity Purified

Protein ID NP_919331.1

Catalog No. A300-611A

GeneID 378435

Lot No. A300-611A-3



APPLICATIONS	WB
SPECIES REACTIVITY	Mouse
PRESUMED REACTIVITY	Based on 100% sequence identity, this antibody is predicted to react with Human
AMOUNT	100 µl
CONCENTRATION	1000 µg/ml
STORAGE/SHELF LIFE	2 - 8° C / 1 year from date of receipt
PHYSICAL STATE	Liquid
BUFFER	Tris-citrate/phosphate buffer, pH 7 to 8 containing 0.09% Sodium Azide
ISOTYPE	IgG
ORIGIN	USA
PRODUCTION PROCEDURES	The epitope recognized by A300-611A maps to a region between residue 300 and the C-terminus (residue 359) of mouse v-maf musculoaponeurotic fibrosarcoma oncogene homolog A using the numbering given in entry NP_919331.1 (GeneID 378435).

Antibody was affinity purified using the peptide immobilized on solid support.

Immunoglobulin concentration was determined by extinction coefficient: absorbance at 280 nm of 1.4 equals 1.0 mg of IgG.

APPLICATIONS Centrifuge tube to remove product from lid. Optimal working dilutions should be determined experimentally by the investigator. Prepare working dilution immediately before use.

Western Blot 1:1,000 - 1:10,000

APPLICATION NOTES Western blot of immunoprecipitates performed using Normal Pig Serum (Cat. No. S100-020), Goat anti-Rabbit Light Chain HRP Conjugate (Cat. No. A120-113P) and 4-20% SDS-PAGE (link to IP-western blot protocol in Additional Info section below).

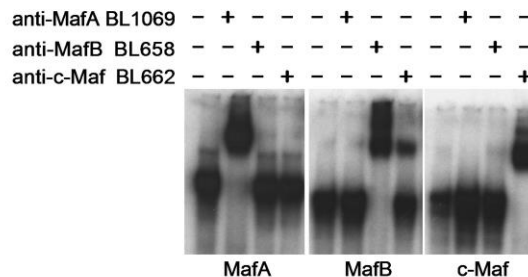
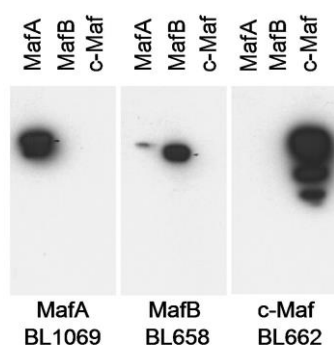
Western blot of lysates performed using standard western blot reagents and 4-20% SDS-PAGE.

ADDITIONAL INFO <https://www.bethyl.com/product/A300-611A>

Use the link above to view SDS, a current list of citations, and other product specific information.

IP-western blot protocol: https://www.bethyl.com/content/protocol_IP_WB

This document certifies that this product has met all of the quality control standards defined by Bethyl Laboratories, Inc.
Eric McIntush, PhD | Chief Scientific Officer Date: June 21, 2019



Detection of MafA, MafB and cMaf by western blot.

Samples: Nuclear extract (6 µg) from HeLa cells transfected with MafA, MafB or cMaf expression constructs.

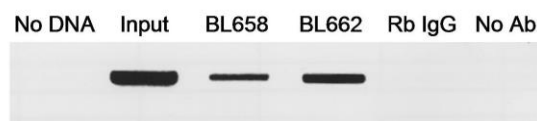
Antibodies: Affinity purified anti-MafA antibody BL1069 (Cat. No. A300-611A), anti-MafB Antibody (Cat. No. A300-612A) or anti-c-Maf antibody BL662 (Cat. No. A300-613A). Each antibody was used at 0.5 µg/ml.

Detection: Chemiluminescence with a 5 second exposure.

Electrophoretic Mobility Shift of MafA, MafB and c-Maf.

Samples: Nuclear extract (6 µg) from HeLa cells transfected with MafA, MafB or c-Maf expression constructs.

Antibodies: Affinity purified anti-MafA antibody BL1069 (Cat. No. A300-611A), anti-MafB Antibody BL658 (Cat. No. A300-612A) or anti-c-Maf antibody BL662 (Cat. No. A300-613A).



Binding of MafA to the enhancer region of the endogenous insulin gene. *Samples:* immunoprecipitatesd cross-linked DNA from betaTC-3 cells was analyzed by PCR. As controls, reactions were run with no DNA, with input chromatin, with DNA obtained after precipitation with rabbit IgG or without antibody (lanes 1 through 5, respectively). *Antibody:* Affinity purified rabbit anti-MafA antibody BL1069 (Cat. No. A300-611A).