



SZABO SCANDIC

Part of Europa Biosite

Produktinformation



Forschungsprodukte & Biochemikalien



Zellkultur & Verbrauchsmaterial



Diagnostik & molekulare Diagnostik



Laborgeräte & Service

Weitere Information auf den folgenden Seiten!
See the following pages for more information!



Lieferung & Zahlungsart

siehe unsere [Liefer- und Versandbedingungen](#)

Zuschläge

- Mindermengenzuschlag
- Trockeneiszuschlag
- Gefahrgutzuschlag
- Expressversand

SZABO-SCANDIC HandelsgmbH

Quellenstraße 110, A-1100 Wien

T. +43(0)1 489 3961-0

F. +43(0)1 489 3961-7

mail@szabo-scandic.com

www.szabo-scandic.com

[linkedin.com/company/szaboscandic](https://www.linkedin.com/company/szaboscandic)

SKIV2L2 Antibody

Rabbit Polyclonal

Antigen Affinity Purified Protein ID NP_056175.2
Catalog No. A300-614A-T GeneID 23517
Lot No. A300-614A-T-4



APPLICATIONS WB, IHC, ICC
SPECIES REACTIVITY Human, Mouse
AMOUNT 20 µl (2 blots)
CONCENTRATION 100 µg/ml
STORAGE/SHELF LIFE 2 – 8° C / 1 year from date of receipt
PHYSICAL STATE Liquid
BUFFER Tris-buffered Saline containing 0.1% BSA and 0.09% Sodium Azide
ISOTYPE IgG
ORIGIN USA
PRODUCTION PROCEDURES Antibody was affinity purified using an epitope specific to SKIV2L2 immobilized on solid support.

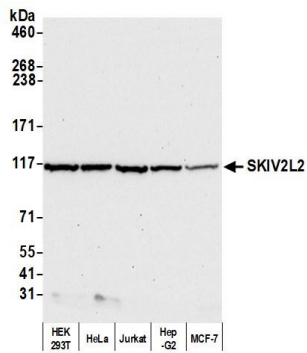
The epitope recognized by A300-614A-T maps to a region between residues 100 and 150 of human SuperKiller Viralicidic Activity 2-Like 2 using the numbering given in entry NP_056175.2 (GeneID 23517).

APPLICATIONS Centrifuge tube to remove product from lid. Optimal working dilutions should be determined experimentally by the investigator. Prepare working dilution immediately before use.

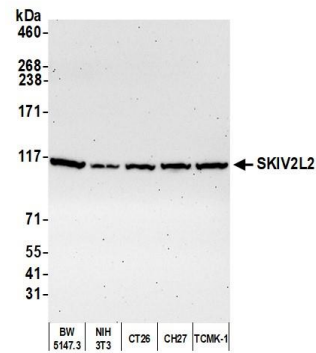
Western Blot 1:1000
Immunoprecipitation Not recommended
Immunohistochemistry 1:50 to 1:250. Epitope retrieval with Tris-EDTA pH9.0 is recommended for FFPE tissue sections.
Immunocytochemistry 1:10 – 1:50. Epitope retrieval with Tris-EDTA pH 9.0 is recommended for FFPE cell sections.

ADDITIONAL INFO <https://www.bethyl.com/product/A300-614A-T>
Use the link above to view SDS, a current list of citations, and other product specific information.
IP-western blot protocol: https://www.bethyl.com/content/protocol_IP_WB

This document certifies that this product has met all of the quality control standards defined by Bethyl Laboratories, Inc.
Eric McIntush, PhD | Chief Scientific Officer Date: October 19, 2020



Detection of human SKIV2L2 by western blot. *Samples:* Whole cell lysate (50 μ g) from HEK293T, HeLa, Jurkat, Hep-G2, and MCF-7 cells prepared using NETN lysis buffer. *Antibody:* Affinity purified rabbit anti-SKIV2L2 antibody A300-614A-T (lot A300-614A-T-4) used for WB at 1:1,000. *Detection:* Chemiluminescence with an exposure time of 30 seconds.



Detection of mouse SKIV2L2 by western blot. *Samples:* Whole cell lysate (50 μ g) from BW5147.3, NIH 3T3, CT26, CH27, and TCMK-1 cells prepared using NETN lysis buffer. *Antibody:* Affinity purified rabbit anti-SKIV2L2 antibody A300-614A-T (lot A300-614A-T-4) used for WB at 1:1,000. *Detection:* Chemiluminescence with an exposure time of 75 seconds.