



SZABO SCANDIC

Part of Europa Biosite

Produktinformation



Forschungsprodukte & Biochemikalien



Zellkultur & Verbrauchsmaterial



Diagnostik & molekulare Diagnostik



Laborgeräte & Service

Weitere Information auf den folgenden Seiten!
See the following pages for more information!



Lieferung & Zahlungsart

siehe unsere [Liefer- und Versandbedingungen](#)

Zuschläge

- Mindermengenzuschlag
- Trockeneiszuschlag
- Gefahrgutzuschlag
- Expressversand

SZABO-SCANDIC HandelsgmbH

Quellenstraße 110, A-1100 Wien

T. +43(0)1 489 3961-0

F. +43(0)1 489 3961-7

mail@szabo-scandic.com

www.szabo-scandic.com

[linkedin.com/company/szaboscandic](https://www.linkedin.com/company/szaboscandic) 

SKIV2L2 Antibody

Rabbit Polyclonal

Antigen Affinity Purified Protein ID NP_056175.2
Catalog No. A300-614A GeneID 23517
Lot No. A300-614A-4



APPLICATIONS WB, IHC, ICC
SPECIES REACTIVITY Human, Mouse
AMOUNT 100 µl
CONCENTRATION 200 µg/ml
STORAGE/SHELF LIFE 2 – 8° C / 1 year from date of receipt
PHYSICAL STATE Liquid
BUFFER Tris-buffered Saline containing 0.1% BSA and 0.09% Sodium Azide
ISOTYPE IgG
ORIGIN USA
PRODUCTION PROCEDURES Antibody was affinity purified using an epitope specific to SKIV2L2 immobilized on solid support.

The epitope recognized by A300-614A maps to a region between residues 100 and 150 of human SuperKiller Viralicidic Activity 2-Like 2 using the numbering given in entry NP_056175.2 (GeneID 23517).

Immunoglobulin concentration was determined by extinction coefficient: absorbance at 280 nm of 1.4 equals 1.0 mg of IgG.

APPLICATIONS Centrifuge tube to remove product from lid. Optimal working dilutions should be determined experimentally by the investigator. Prepare working dilution immediately before use.

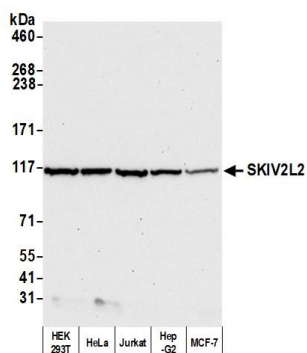
Western Blot 1:2,000 – 1:10,000
Immunohistochemistry 1:100 to 1:500. Epitope retrieval with Tris-EDTA pH9.0 is recommended for FFPE tissue sections.
Immunocytochemistry 1:100 – 1:500. Epitope retrieval with Tris-EDTA pH 9.0 is recommended for FFPE cell sections.

IHC HUMAN CONTROLS Colon Carcinoma, Non-Small Cell Lung Cancer, Ovarian Carcinoma, Testicular Seminoma, K-562 Cells

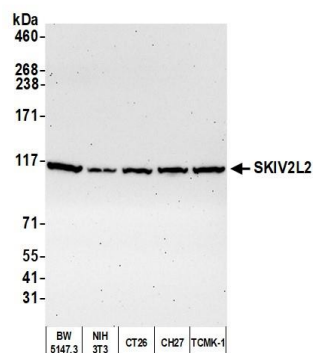
IHC MOUSE CONTROLS Teratoma

ADDITIONAL INFO <https://www.bethyl.com/product/A300-614A>
Use the link above to view SDS, a current list of citations, and other product specific information.
IP-western blot protocol: https://www.bethyl.com/content/protocol_IP_WB

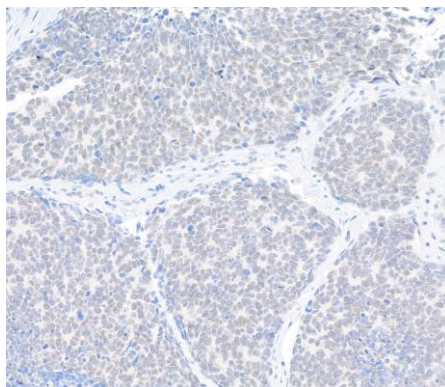
This document certifies that this product has met all of the quality control standards defined by Bethyl Laboratories, Inc.
Eric McIntush, PhD | Chief Scientific Officer Date: October 19, 2020



Detection of human SKIV2L2 by western blot. *Samples:* Whole cell lysate (50 μ g) from HEK293T, HeLa, Jurkat, Hep-G2, and MCF-7 cells prepared using NETN lysis buffer. *Antibody:* Affinity purified rabbit anti-SKIV2L2 antibody A300-614A (lot A300-614A-4) used for WB at 0.1 μ g/ml. *Detection:* Chemiluminescence with an exposure time of 30 seconds.



Detection of mouse SKIV2L2 by western blot. *Samples:* Whole cell lysate (50 μ g) from BW5147.3, NIH 3T3, CT26, CH27, and TCMK-1 cells prepared using NETN lysis buffer. *Antibody:* Affinity purified rabbit anti-SKIV2L2 antibody A300-614A (lot A300-614A-4) used for WB at 0.1 μ g/ml. *Detection:* Chemiluminescence with an exposure time of 75 seconds.



Detection of human SKIV2L2 by immunohistochemistry. *Sample:* FFPE section of human lung carcinoma. *Antibody:* Affinity purified rabbit anti-SKIV2L2 (Cat. No. A300-614A Lot4) used at a dilution of 1:200 (1 μ g/ml). *Detection:* DAB