



# SZABO SCANDIC

Part of Europa Biosite

## Produktinformation



Forschungsprodukte & Biochemikalien



Zellkultur & Verbrauchsmaterial



Diagnostik & molekulare Diagnostik



Laborgeräte & Service

Weitere Information auf den folgenden Seiten!  
See the following pages for more information!



### Lieferung & Zahlungsart

siehe unsere [Liefer- und Versandbedingungen](#)

### Zuschläge

- Mindermengenzuschlag
- Trockeneiszuschlag
- Gefahrgutzuschlag
- Expressversand

### SZABO-SCANDIC HandelsgmbH

Quellenstraße 110, A-1100 Wien

T. +43(0)1 489 3961-0

F. +43(0)1 489 3961-7

[mail@szabo-scandic.com](mailto:mail@szabo-scandic.com)

[www.szabo-scandic.com](http://www.szabo-scandic.com)

[linkedin.com/company/szaboscandic](https://www.linkedin.com/company/szaboscandic) 

# DDX10 Antibody

Rabbit Polyclonal

Antigen Affinity Purified

Protein ID NP\_004389.2

Catalog No. A300-616A-T

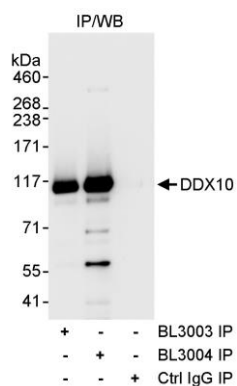
GeneID 1662

Lot No. A300-616A-T-1



<b>APPLICATIONS</b>	IP
<b>SPECIES REACTIVITY</b>	Human
<b>AMOUNT</b>	10 µl
<b>CONCENTRATION</b>	1000 µg/ml
<b>STORAGE/SHELF LIFE</b>	2 - 8° C / 1 year from date of receipt
<b>PHYSICAL STATE</b>	Liquid
<b>BUFFER</b>	Tris-citrate/phosphate buffer, pH 7 to 8 containing 0.09% Sodium Azide
<b>ISOTYPE</b>	IgG
<b>ORIGIN</b>	USA
<b>PRODUCTION PROCEDURES</b>	<p>Antibody was affinity purified using an epitope specific to DDX10 immobilized on solid support.</p> <p>The epitope recognized by A300-616A-T maps to a region between residues 500 and 550 of human DEAD (Asp-Glu-Ala-Asp) Box Polypeptide 10 using the numbering given in entry NP_004389.2 (GeneID 1662).</p> <p>Immunoglobulin concentration was determined by extinction coefficient: absorbance at 280 nm of 1.4 equals 1.0 mg of IgG.</p>
<b>APPLICATIONS</b>	<p>Centrifuge tube to remove product from lid. Optimal working dilutions should be determined experimentally by the investigator. Prepare working dilution immediately before use.</p> <p>Western Blot                      Not recommended. Use rabbit anti-DDX10 antibody A300-617A.</p> <p>Immunoprecipitation            1 - 4 µg/mg lysate</p>
<b>APPLICATION NOTES</b>	Western blot of immunoprecipitates performed using Normal Pig Serum (Cat. No. S100-020), Goat anti-Rabbit Light Chain HRP Conjugate (Cat. No. A120-113P) and 4-8% SDS-PAGE (link to IP-western blot protocol in Additional Info section below).
<b>ADDITIONAL INFO</b>	<p><a href="https://www.bethyl.com/product/A300-616A-T">https://www.bethyl.com/product/A300-616A-T</a></p> <p>Use the link above to view SDS, a current list of citations, and other product specific information. IP-western blot protocol: <a href="https://www.bethyl.com/content/protocol_IP_WB">https://www.bethyl.com/content/protocol_IP_WB</a></p>

This document certifies that this product has met all of the quality control standards defined by Bethyl Laboratories, Inc.  
Eric McIntush, PhD | Chief Scientific Officer Date: June 21, 2019



**Detection of human DDX10 by western blot of immunoprecipitates.** *Samples:* Whole cell lysate (1 mg for IP, 20% of IP loaded) from HeLa cells. *Antibody:* Affinity purified rabbit anti-DDX10 antibody BL3003 (Cat. No. A300-616A-T) used for IP at 3  $\mu$ g/mg lysate. DDX10 was also immunoprecipitated with rabbit anti-DDX10 antibody BL3004 (Cat. No. A300-617A) used at 3  $\mu$ g/mg lysate. To detect immunoprecipitated DDX10, BL3004 (1  $\mu$ g/ml) was used. *Detection:* Chemiluminescence with exposure times of 10 seconds.