



# SZABO SCANDIC

Part of Europa Biosite

## Produktinformation



Forschungsprodukte & Biochemikalien



Zellkultur & Verbrauchsmaterial



Diagnostik & molekulare Diagnostik



Laborgeräte & Service

Weitere Information auf den folgenden Seiten!  
See the following pages for more information!



### Lieferung & Zahlungsart

siehe unsere [Liefer- und Versandbedingungen](#)

### Zuschläge

- Mindermengenzuschlag
- Trockeneiszuschlag
- Gefahrgutzuschlag
- Expressversand

### SZABO-SCANDIC HandelsgmbH

Quellenstraße 110, A-1100 Wien

T. +43(0)1 489 3961-0

F. +43(0)1 489 3961-7

[mail@szabo-scandic.com](mailto:mail@szabo-scandic.com)

[www.szabo-scandic.com](http://www.szabo-scandic.com)

[linkedin.com/company/szaboscandic](https://www.linkedin.com/company/szaboscandic) 

# ErbB2 Antibody

Rabbit Polyclonal

Antigen Affinity Purified	RefSeq ID	NP_004439.2
Catalog No. A300-621A-T	Uniprot ID	P04626
Lot No. 1	GeneID	2064

---

<b>APPLICATIONS</b>	WB, IP, IHC
<b>SPECIES REACTIVITY</b>	Human
<b>PRESUMED REACTIVITY</b>	Based on 100% sequence identity, this antibody is predicted to react with Dog
<b>AMOUNT</b>	10 µl
<b>CONCENTRATION</b>	200 µg/ml
<b>STORAGE/SHELF LIFE</b>	2 – 8°C / 1 year from date of receipt
<b>PHYSICAL STATE</b>	Liquid
<b>BUFFER</b>	Tris-buffered Saline containing 0.1% BSA and 0.09% Sodium Azide
<b>ISOTYPE</b>	IgG
<b>ORIGIN</b>	USA
<b>PRODUCTION PROCEDURES</b>	Antibody was affinity purified using an epitope specific to ErbB2 immobilized on solid support.

The epitope recognized by A300-621A maps to a region between residues 975 and 1025 of human v-erb-b2 erythroblastic leukemia viral oncogene homolog 2 using the numbering given in entry NP\_004439.2 (GeneID 2064).

Immunoglobulin concentration was determined using Beer's Law where 1mg/mL IgG has an A280 of 1.4.

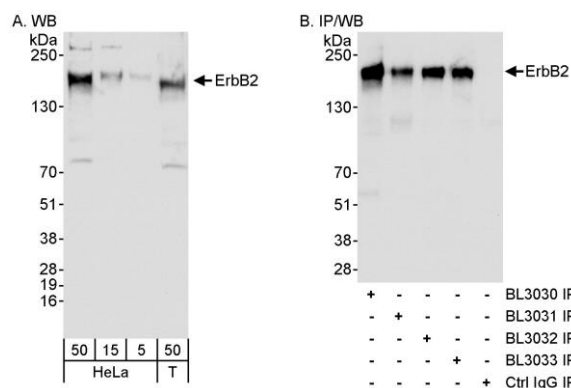
**APPLICATIONS** Centrifuge tube to remove product from lid. Optimal working dilutions should be determined experimentally by the investigator. Prepare working dilution immediately before use.

Western Blot	1:2000 – 1:10,000
Immunoprecipitation	6 µg/mg lysate
Immunohistochemistry	1:100 – 1:500. Epitope retrieval with Tris-EDTA pH 9.0 is recommended for FFPE tissue sections.

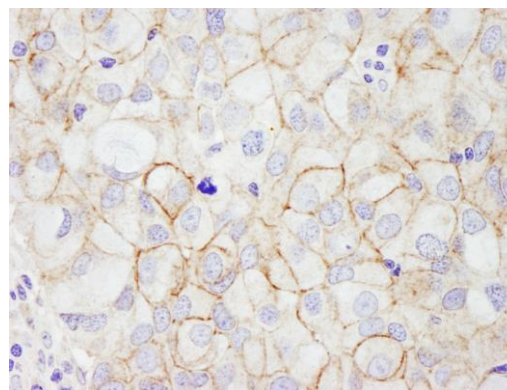
**IHC HUMAN CONTROLS** Breast Carcinoma

**ADDITIONAL INFO** <https://www.fortislife.com/p/A300-621A-T>  
Use the link above to view SDS, a current list of citations, and other product specific information.

This document certifies that this product has met all of the quality control standards defined by Bethyl Laboratories, Inc.  
Michael Spencer, PhD Date: January 31, 2024



**Detection of human ErbB2 by western blot and immunoprecipitation.** *Samples:* Whole cell lysate from HeLa (5, 15 and 50  $\mu$ g for WB; 1 mg for IP, 20% of IP loaded) and HEK293T (T; 50  $\mu$ g for WB) cells. *Antibodies:* Affinity purified rabbit anti-ErbB2 antibody BL3030 (Cat. No. A300-621A) used for WB at 1  $\mu$ g/ml (A) and 0.04  $\mu$ g/ml (B) and used for IP at 3  $\mu$ g/mg lysate. ErbB2 was also immunoprecipitated using rabbit anti-ErbB2 antibodies BL3031, BL3032 (Cat. No. A300-622A) and BL3033 (Cat. No. A300-623A) at 3  $\mu$ g/mg lysate. *Detection:* Chemiluminescence with exposure times of 10 seconds (A and B).



**Detection of human ErbB2 by immunohistochemistry.** *Sample:* FFPE section of human breast carcinoma. *Antibody:* Affinity purified rabbit anti-ErbB2 (Cat. No. A300-621A Lot1) used at a dilution of 1:200 (1  $\mu$ g/ml). *Detection:* DAB