



SZABO SCANDIC

Part of Europa Biosite

Produktinformation



Forschungsprodukte & Biochemikalien



Zellkultur & Verbrauchsmaterial



Diagnostik & molekulare Diagnostik



Laborgeräte & Service

Weitere Information auf den folgenden Seiten!
See the following pages for more information!



Lieferung & Zahlungsart

siehe unsere [Liefer- und Versandbedingungen](#)

Zuschläge

- Mindermengenzuschlag
- Trockeneiszuschlag
- Gefahrgutzuschlag
- Expressversand

SZABO-SCANDIC HandelsgmbH

Quellenstraße 110, A-1100 Wien

T. +43(0)1 489 3961-0

F. +43(0)1 489 3961-7

mail@szabo-scandic.com

www.szabo-scandic.com

[linkedin.com/company/szaboscandic](https://www.linkedin.com/company/szaboscandic) 

ErbB2 Antibody

Rabbit Polyclonal

Antigen Affinity Purified	RefSeq ID	NP_004439.2
Catalog No. A300-623A-T	Uniprot ID	P04626
Lot No. 1	GeneID	2064

APPLICATIONS	WB, IP, IHC
SPECIES REACTIVITY	Human
PRESUMED REACTIVITY	Based on 100% sequence identity, this antibody is predicted to react with Mouse, Rat, Dog and Golden hamster
AMOUNT	10 µl
CONCENTRATION	200 µg/ml
STORAGE/SHELF LIFE	2 – 8°C / 1 year from date of receipt
PHYSICAL STATE	Liquid
BUFFER	Tris-buffered Saline containing 0.1% BSA and 0.09% Sodium Azide
ISOTYPE	IgG
ORIGIN	USA
PRODUCTION PROCEDURES	Antibody was affinity purified using an epitope specific to ErbB2 immobilized on solid support.

The epitope recognized by A300-623A maps to a region between residue 1200 and the C-terminus (residue 1255) of human v-erb-b2 erythroblastic leukemia viral oncogene homolog 2 using the numbering given in entry NP_004439.2 (GeneID 2064).

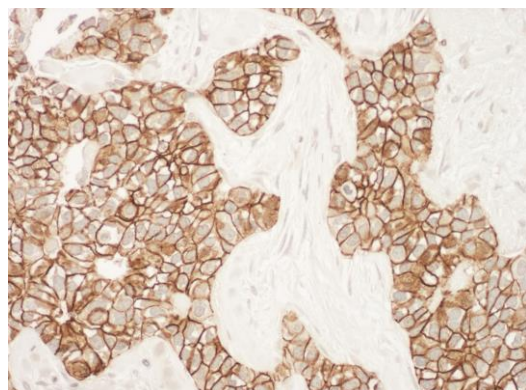
Immunoglobulin concentration was determined using Beer's Law where 1mg/mL IgG has an A280 of 1.4.

APPLICATIONS	Centrifuge tube to remove product from lid. Optimal working dilutions should be determined experimentally by the investigator. Prepare working dilution immediately before use.
	Western Blot 1:2000 – 1:10,000
	Immunoprecipitation 6 µg/mg lysate
	Immunohistochemistry 1:100 – 1:500. Epitope retrieval with Tris-EDTA pH 9.0 is recommended for FFPE tissue sections.

IHC HUMAN CONTROLS	Breast Carcinoma
---------------------------	------------------

ADDITIONAL INFO	https://www.fortislife.com/p/A300-623A-T Use the link above to view SDS, a current list of citations, and other product specific information.
------------------------	---

This document certifies that this product has met all of the quality control standards defined by Bethyl Laboratories, Inc.
Michael Spencer, PhD Date: January 31, 2024

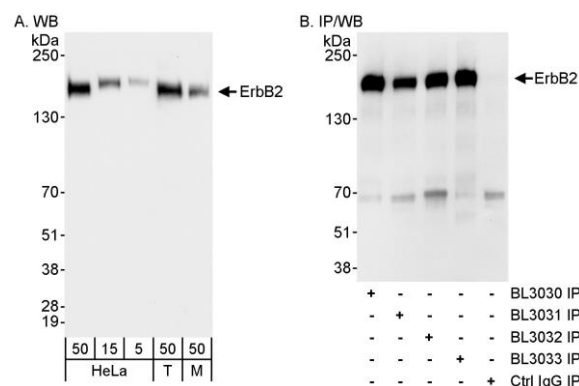


Detection of human ErbB2 by immunohistochemistry.

Sample: FFPE section of human breast carcinoma.

Antibody: Affinity purified rabbit anti-ErbB2 (Cat. No. A300-623A Lot1) used at a dilution of 1:200 (1µg/ml).

Detection: DAB



Detection of human and mouse ErbB2 by western blot (H & M) and immunoprecipitation (H).

Samples: Whole cell lysate from HeLa (5, 15 and 50 µg for WB; 1 mg for IP, 20% of IP loaded), HEK293T (T; 50 µg for WB) and mouse NIH 3T3 (M; 50 µg for WB) cells. *Antibodies:* Affinity purified rabbit anti-ErbB2 antibody BL3033 (Cat. No. A300-623A) used for WB at 1 µg/ml (A) and 0.04 µg/ml (B) and used for IP at 3 µg/mg lysate. ErbB2 was also immunoprecipitated using rabbit anti-ErbB2 antibodies BL3030 (Cat. No. A300-621A) BL3031 and BL3032 (Cat. No. A300-622A) at 3 µg/mg lysate. *Detection:* Chemiluminescence with exposure times of 10 seconds (A and B).