



# SZABO SCANDIC

Part of Europa Biosite

## Produktinformation



Forschungsprodukte & Biochemikalien



Zellkultur & Verbrauchsmaterial



Diagnostik & molekulare Diagnostik



Laborgeräte & Service

Weitere Information auf den folgenden Seiten!  
See the following pages for more information!



### Lieferung & Zahlungsart

siehe unsere [Liefer- und Versandbedingungen](#)

### Zuschläge

- Mindermengenzuschlag
- Trockeneiszuschlag
- Gefahrgutzuschlag
- Expressversand

### SZABO-SCANDIC HandelsgmbH

Quellenstraße 110, A-1100 Wien

T. +43(0)1 489 3961-0

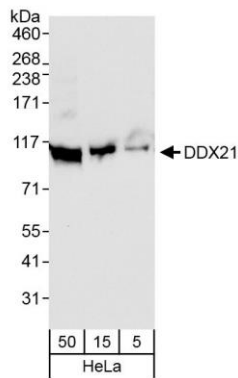
F. +43(0)1 489 3961-7

[mail@szabo-scandic.com](mailto:mail@szabo-scandic.com)

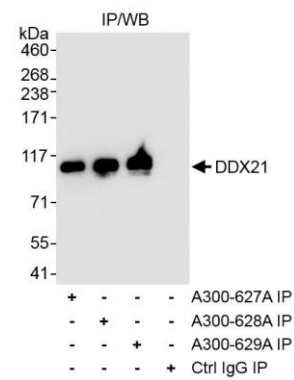
[www.szabo-scandic.com](http://www.szabo-scandic.com)

[linkedin.com/company/szaboscandic](https://www.linkedin.com/company/szaboscandic) 





**Detection of human DDX21 by western blot.** *Samples:* Whole cell lysate from HeLa cells. *Antibodies:* Affinity purified rabbit anti-DDX21 antibody A300-628A (lot A300-628A-1) used for WB at 0.04  $\mu\text{g}/\text{ml}$ . *Detection:* Chemiluminescence with exposure time of 10 seconds.



**Detection of human DDX21 by western blot of immunoprecipitates.** *Samples:* Whole cell lysate (1 mg for IP, 20% of IP loaded) from HeLa cells. *Antibodies:* Affinity purified rabbit anti-DDX21 antibody A300-628A (lot A300-628A-1) used for IP at 3  $\mu\text{g}/\text{mg}$  lysate. DDX21 was also immunoprecipitated using rabbit anti-DDX21 antibodies A300-627A and A300-629A at 3  $\mu\text{g}/\text{mg}$  lysate. For blotting immunoprecipitated DDX21, A300-628A was used at 1  $\mu\text{g}/\text{ml}$ . *Detection:* Chemiluminescence with exposure time of 3 seconds.