



SZABO SCANDIC

Part of Europa Biosite

Produktinformation



Forschungsprodukte & Biochemikalien



Zellkultur & Verbrauchsmaterial



Diagnostik & molekulare Diagnostik



Laborgeräte & Service

Weitere Information auf den folgenden Seiten!
See the following pages for more information!



Lieferung & Zahlungsart

siehe unsere [Liefer- und Versandbedingungen](#)

Zuschläge

- Mindermengenzuschlag
- Trockeneiszuschlag
- Gefahrgutzuschlag
- Expressversand

SZABO-SCANDIC HandelsgmbH

Quellenstraße 110, A-1100 Wien

T. +43(0)1 489 3961-0

F. +43(0)1 489 3961-7

mail@szabo-scandic.com

www.szabo-scandic.com

[linkedin.com/company/szaboscandic](https://www.linkedin.com/company/szaboscandic) 

BLAP75 Antibody

Rabbit Polyclonal

Antigen Affinity Purified	Protein ID	NP_079221.1
Catalog No. A300-631A-T	GeneID	80010
Lot No. A300-631A-T-2		

APPLICATIONS	WB, IP, IHC
SPECIES REACTIVITY	Human
AMOUNT	20 μ l (2 blots)
CONCENTRATION	100 μ g/ml
STORAGE/SHELF LIFE	2 - 8° C / 1 year from date of receipt
PHYSICAL STATE	Liquid
BUFFER	Tris-buffered Saline containing 0.1% BSA and 0.09% Sodium Azide
ISOTYPE	IgG
ORIGIN	USA
PRODUCTION PROCEDURES	Antibody was affinity purified using an epitope specific to BLAP75 immobilized on solid support.

The epitope recognized by A300-631A-T maps to a region between residues 275 and 300 of human BLM Associated Protein, 75kDA using the numbering given in entry NP_079221.1 (GeneID 80010).

APPLICATIONS Centrifuge tube to remove product from lid. Optimal working dilutions should be determined experimentally by the investigator. Prepare working dilution immediately before use.

Western Blot 1:1000

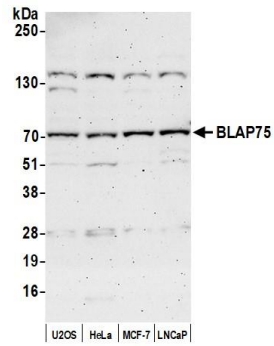
Immunoprecipitation The antibody contained within A300-631A-T has been qualified for use in immunoprecipitation; however, we recommend using the alternative formulation of this antibody found as product A300-631A.

Immunohistochemistry 1:20 - 1:100. Epitope retrieval with citrate buffer pH 6.0 is recommended for FFPE tissue sections.

ADDITIONAL INFO <https://www.bethyl.com/product/A300-631A-T>

Use the link above to view SDS, a current list of citations, and other product specific information. IP-western blot protocol: https://www.bethyl.com/content/protocol_IP_WB

This document certifies that this product has met all of the quality control standards defined by Bethyl Laboratories, Inc.
Michael Spencer, PhD Date: September 16, 2021



Detection of human BLAP75 by western blot. *Samples:* Whole cell lysate (50 μ g) from U2OS, HeLa, MCF-7, and LNCaP cells prepared using NETN lysis buffer. *Antibody:* Affinity purified rabbit anti-BLAP75 antibody (A300-631A-T lot 2) used for WB at 1:1000. *Detection:* Chemiluminescence with an exposure time of 3 minutes.