



SZABO SCANDIC

Part of Europa Biosite

Produktinformation



Forschungsprodukte & Biochemikalien



Zellkultur & Verbrauchsmaterial



Diagnostik & molekulare Diagnostik



Laborgeräte & Service

Weitere Information auf den folgenden Seiten!
See the following pages for more information!



Lieferung & Zahlungsart

siehe unsere [Liefer- und Versandbedingungen](#)

Zuschläge

- Mindermengenzuschlag
- Trockeneiszuschlag
- Gefahrgutzuschlag
- Expressversand

SZABO-SCANDIC HandelsgmbH

Quellenstraße 110, A-1100 Wien

T. +43(0)1 489 3961-0

F. +43(0)1 489 3961-7

mail@szabo-scandic.com

www.szabo-scandic.com

[linkedin.com/company/szaboscandic](https://www.linkedin.com/company/szaboscandic) 

BLAP75 Antibody

Rabbit Polyclonal

Antigen Affinity Purified

Protein ID NP_079221.1

Catalog No. A300-631A

GeneID 80010

Lot No. A300-631A-2

APPLICATIONS WB, IP, IHC

SPECIES REACTIVITY Human

AMOUNT 100 µl

CONCENTRATION 1000 µg/ml

STORAGE/SHELF LIFE 2 - 8° C / 1 year from date of receipt

PHYSICAL STATE Liquid

BUFFER Tris-buffered Saline containing 0.1% BSA and 0.09% Sodium Azide

ISOTYPE IgG

ORIGIN USA

PRODUCTION PROCEDURES Antibody was affinity purified using an epitope specific to BLAP75 immobilized on solid support.

The epitope recognized by A300-631A maps to a region between residues 275 and 300 of human BLM Associated Protein, 75kDA using the numbering given in entry NP_079221.1 (GeneID 80010).

Immunoglobulin concentration was determined by extinction coefficient: absorbance at 280 nm of 1.4 equals 1.0 mg of IgG.

APPLICATIONS Centrifuge tube to remove product from lid. Optimal working dilutions should be determined experimentally by the investigator. Prepare working dilution immediately before use.

Western Blot 1:2,000 - 1:10,000

Immunoprecipitation 2 - 10 µg/mg lysate

Immunohistochemistry 1:100 - 1:500. Epitope retrieval with citrate buffer pH 6.0 is recommended for FFPE tissue sections.

IHC HUMAN CONTROLS Colon Carcinoma, Ovarian Carcinoma, Prostate Carcinoma, Skin Basal Cell Carcinoma

ADDITIONAL INFO <https://www.bethyl.com/product/A300-631A>

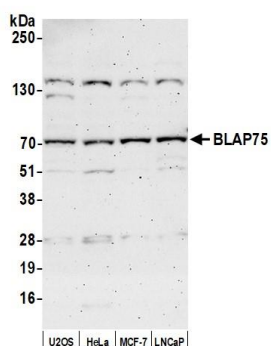
Use the link above to view SDS, a current list of citations, and other product specific information.

IP-western blot protocol: https://www.bethyl.com/content/protocol_IP_WB

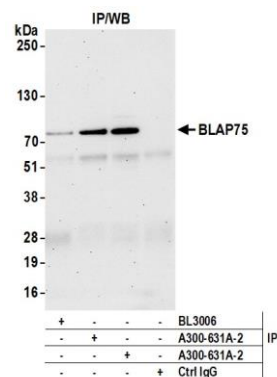
This document certifies that this product has met all of the quality control standards defined by Bethyl Laboratories, Inc.

Michael Spencer, PhD

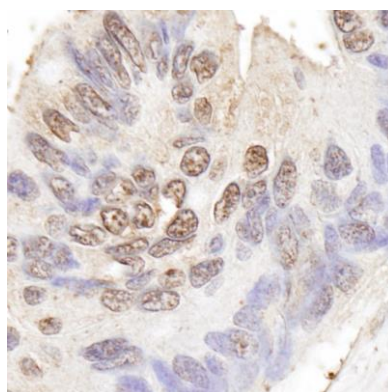
Date: September 16, 2021



Detection of human BLAP75 by western blot. *Samples:* Whole cell lysate (50 μ g) from U2OS, HeLa, MCF-7, and LNCaP cells prepared using NETN lysis buffer. *Antibody:* Affinity purified rabbit anti-BLAP75 antibody (A300-631A lot 2) used for WB at 0.1 μ g/ml. *Detection:* Chemiluminescence with an exposure time of 3 minutes.



Detection of human BLAP75 by western blot of immunoprecipitates. *Samples:* Whole cell lysate (1.0 mg per IP reaction; 20% of IP loaded) from HeLa cells prepared using NETN lysis buffer. *Antibodies:* Affinity purified rabbit anti-BLAP75 antibody (A300-631A lot 2) used for IP at 6 μ g per reaction. BLAP75 was also immunoprecipitated by a previous lot of this antibody (A300-631A lot 1) and a second antibody against a different epitope of BLAP75 (BL3007). For blotting immunoprecipitated BLAP75, A300-631A was used at 0.1 μ g/ml. *Detection:* Chemiluminescence with an exposure time of 30 seconds.



Detection of human BLAP75 by immunohistochemistry. *Sample:* FFPE section of human ovarian carcinoma. *Antibody:* Affinity purified rabbit anti-BLAP75 (Cat. No. A300-631A Lot1) used at a dilution of 1:200 (1 μ g/ml). *Detection:* DAB