



# SZABO SCANDIC

Part of Europa Biosite

## Produktinformation



Forschungsprodukte & Biochemikalien



Zellkultur & Verbrauchsmaterial



Diagnostik & molekulare Diagnostik



Laborgeräte & Service

Weitere Information auf den folgenden Seiten!  
See the following pages for more information!



### Lieferung & Zahlungsart

siehe unsere [Liefer- und Versandbedingungen](#)

### Zuschläge

- Mindermengenzuschlag
- Trockeneiszuschlag
- Gefahrgutzuschlag
- Expressversand

### SZABO-SCANDIC HandelsgmbH

Quellenstraße 110, A-1100 Wien

T. +43(0)1 489 3961-0

F. +43(0)1 489 3961-7

[mail@szabo-scandic.com](mailto:mail@szabo-scandic.com)

[www.szabo-scandic.com](http://www.szabo-scandic.com)

[linkedin.com/company/szaboscandic](https://www.linkedin.com/company/szaboscandic) 

# GAPDH Antibody

Rabbit Polyclonal

Antigen Affinity Purified	Protein ID	NP_002037.2
Catalog No. A300-639A	GeneID	2597
Lot No. A300-639A-6		

---

<b>APPLICATIONS</b>	WB, IHC
<b>SPECIES REACTIVITY</b>	Human, Mouse
<b>PRESUMED REACTIVITY</b>	Based on 100% sequence identity, this antibody is predicted to react with Rat, Zebrafish, Chicken, Sheep, Bovine, Rabbit, Guinea pig_10141, Pig, Golden hamster, Cat and Orangutan
<b>AMOUNT</b>	100 µl
<b>CONCENTRATION</b>	200 µg/ml
<b>STORAGE/SHELF LIFE</b>	2 - 8°C / 1 year from date of receipt
<b>PHYSICAL STATE</b>	Liquid
<b>BUFFER</b>	Tris-buffered Saline containing 0.1% BSA and 0.09% Sodium Azide
<b>ISOTYPE</b>	IgG
<b>ORIGIN</b>	USA
<b>PRODUCTION PROCEDURES</b>	Antibody was affinity purified using an epitope specific to GAPDH immobilized on solid support.

The epitope recognized by A300-639A maps to a region between residues 150 and 200 of human Glyceraldehyde-3-Phosphate Dehydrogenase using the numbering given in entry NP\_002037.2 (GeneID 2597).

Immunoglobulin concentration was determined by extinction coefficient: absorbance at 280 nm of 1.4 equals 1.0 mg of IgG.

**APPLICATIONS** Centrifuge tube to remove product from lid. Optimal working dilutions should be determined experimentally by the investigator. Prepare working dilution immediately before use.

Western Blot 1:2,000 - 1:10,000

Immunoprecipitation Not recommended

Immunohistochemistry 1:500 to 1:2,000. Epitope retrieval with citrate buffer pH6.0 is recommended for FFPE tissue sections.

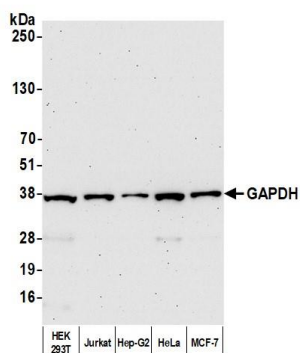
**IHC HUMAN CONTROLS** Breast Carcinoma, Colon Carcinoma, Prostate Carcinoma, Skin Basal Cell Carcinoma

**IHC MOUSE CONTROLS** Plasmacytoma, Small Intestine, Squamous Cell Carcinoma

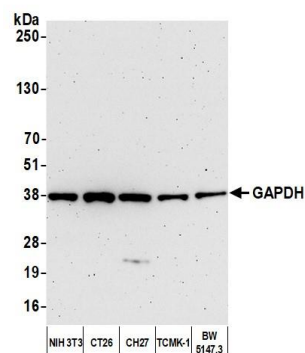
**ADDITIONAL INFO** <https://www.bethyl.com/product/A300-639A>

Use the link above to view SDS, a current list of citations, and other product specific information.

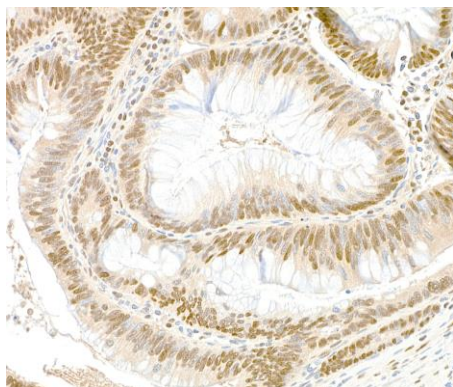
This document certifies that this product has met all of the quality control standards defined by Bethyl Laboratories, Inc.  
Michael Spencer, PhD Date: November 4, 2021



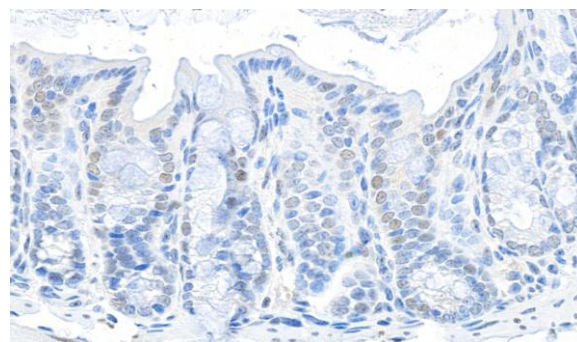
**Detection of human GAPDH by western blot.** *Samples:* Whole cell lysate (10  $\mu$ g) from HEK293T, Jurkat, Hep-G2, HeLa, and MCF-7 cells prepared using NETN lysis buffer. *Antibody:* Affinity purified rabbit anti-GAPDH antibody (A300-639A lot 6) used for WB at 0.04  $\mu$ g/ml. *Detection:* Chemiluminescence with an exposure time of 75 seconds.



**Detection of mouse GAPDH by western blot.** *Samples:* Whole cell lysate (10  $\mu$ g) from NIH 3T3, CT26, CH27, TCMK-1, and BW5147.3 cells prepared using NETN lysis buffer. *Antibody:* Affinity purified rabbit anti-GAPDH antibody (A300-639A lot 6) used for WB at 0.04  $\mu$ g/ml. *Detection:* Chemiluminescence with an exposure time of 3 minutes.



**Detection of human GAPDH by immunohistochemistry.** *Sample:* FFPE section of human colon carcinoma. *Antibody:* Affinity purified rabbit anti-GAPDH (A300-639A Lot 6) used at a dilution of 1:1,000 (0.2  $\mu$ g/ml). *Detection:* DAB



**Detection of mouse GAPDH by immunohistochemistry.** *Sample:* FFPE section of mouse intestine. *Antibody:* Affinity purified rabbit anti-GAPDH (A300-639A Lot 6) used at a dilution of 1:1,000 (0.2  $\mu$ g/ml). *Detection:* DAB