



SZABO SCANDIC

Part of Europa Biosite

Produktinformation



Forschungsprodukte & Biochemikalien



Zellkultur & Verbrauchsmaterial



Diagnostik & molekulare Diagnostik



Laborgeräte & Service

Weitere Information auf den folgenden Seiten!
See the following pages for more information!



Lieferung & Zahlungsart

siehe unsere [Liefer- und Versandbedingungen](#)

Zuschläge

- Mindermengenzuschlag
- Trockeneiszuschlag
- Gefahrgutzuschlag
- Expressversand

SZABO-SCANDIC HandelsgmbH

Quellenstraße 110, A-1100 Wien

T. +43(0)1 489 3961-0

F. +43(0)1 489 3961-7

mail@szabo-scandic.com

www.szabo-scandic.com

[linkedin.com/company/szaboscandic](https://www.linkedin.com/company/szaboscandic) 

DEC1 Antibody

Rabbit Polyclonal

Antigen Affinity Purified

Protein ID NP_003661.1

Catalog No. A300-649A

GeneID 8553

Lot No. A300-649A-3

APPLICATIONS	WB, IP, IHC
SPECIES REACTIVITY	Human
PRESUMED REACTIVITY	Based on 100% sequence identity, this antibody is predicted to react with Orangutan
AMOUNT	100 µl
CONCENTRATION	1000 µg/ml
STORAGE/SHELF LIFE	2 – 8°C / 1 year from date of receipt
PHYSICAL STATE	Liquid
BUFFER	Tris-citrate/phosphate buffer, pH 7 to 8 containing 0.09% Sodium Azide
ISOTYPE	IgG
ORIGIN	USA
PRODUCTION PROCEDURES	Antibody was affinity purified using an epitope specific to DEC1 immobilized on solid support.

The epitope recognized by A300-649A maps to a region between residues 350 and the C-terminus (residue 412) of human Differentially Expressed in Chondrocytes (Basic Helix-Look-Helix Domain Containing, Class B, 2) using the numbering given in entry NP_003661.1 (GeneID 8553).

Immunoglobulin concentration was determined by extinction coefficient: absorbance at 280 nm of 1.4 equals 1.0 mg of IgG.

APPLICATIONS

Centrifuge tube to remove product from lid. Optimal working dilutions should be determined experimentally by the investigator. Prepare working dilution immediately before use.

Western Blot 1:2,000 – 1:10,000

Immunoprecipitation 2 – 10 µg/mg lysate

Immunohistochemistry 1:500 – 1:2,000. Epitope retrieval with Tris-EDTA pH 9.0 is recommended for FFPE tissue sections.

IHC HUMAN CONTROLS

Breast Carcinoma, Ovarian Carcinoma, Prostate Carcinoma

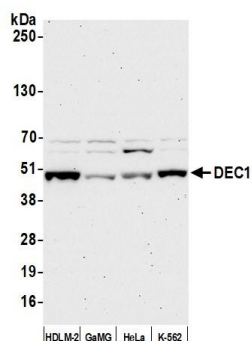
ADDITIONAL INFO

<https://www.bethyl.com/product/A300-649A>

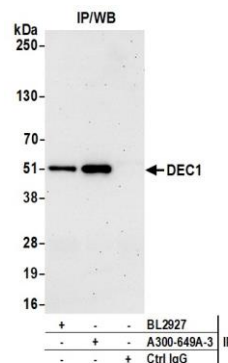
Use the link above to view SDS, a current list of citations, and other product specific information.

IP-western blot protocol: https://www.bethyl.com/content/protocol_IP_WB

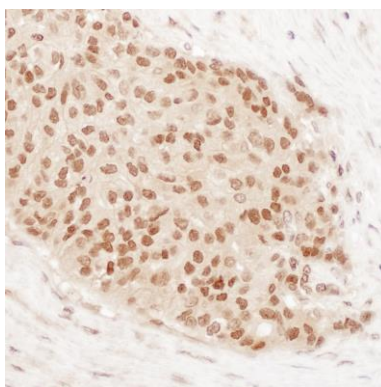
This document certifies that this product has met all of the quality control standards defined by Bethyl Laboratories, Inc.
Michael Spencer, PhD Date: October 27, 2021



Detection of human DEC1 by western blot. *Samples:* Whole cell lysate (50 μ g) from HDLM-2, GaMG, HeLa, and K-562 cells prepared using NETN lysis buffer. *Antibody:* Affinity purified rabbit anti-DEC1 antibody (A300-649A lot 3) used for WB at 0.4 μ g/ml. *Detection:* Chemiluminescence with an exposure time of 75 seconds.



Detection of human DEC1 by western blot of immunoprecipitates. *Samples:* Whole cell lysate (1.0 mg per IP reaction; 20% of IP loaded) from K-562 cells prepared using NETN lysis buffer. *Antibodies:* Affinity purified rabbit anti-DEC1 antibody (A300-649A lot 3) used for IP at 6 μ g per reaction. DEC1 was also immunoprecipitated by a second antibody against a different epitope of DEC1 (BL2927). For blotting immunoprecipitated DEC1, A300-649A was used at 0.4 μ g/ml. *Detection:* Chemiluminescence with an exposure time of 75 seconds.



Detection of human DEC1 by immunohistochemistry.

Sample: FFPE section of human ovarian carcinoma.
Antibody: Affinity purified rabbit anti-DEC1 (Cat. No. A300-649A Lot2) used at a dilution of 1:1,000 (1 μ g/ml).
Detection: DAB