



# SZABO SCANDIC

Part of Europa Biosite

## Produktinformation



Forschungsprodukte & Biochemikalien



Zellkultur & Verbrauchsmaterial



Diagnostik & molekulare Diagnostik



Laborgeräte & Service

Weitere Information auf den folgenden Seiten!  
See the following pages for more information!



### Lieferung & Zahlungsart

siehe unsere [Liefer- und Versandbedingungen](#)

### Zuschläge

- Mindermengenzuschlag
- Trockeneiszuschlag
- Gefahrgutzuschlag
- Expressversand

### SZABO-SCANDIC HandelsgmbH

Quellenstraße 110, A-1100 Wien

T. +43(0)1 489 3961-0

F. +43(0)1 489 3961-7

[mail@szabo-scandic.com](mailto:mail@szabo-scandic.com)

[www.szabo-scandic.com](http://www.szabo-scandic.com)

[linkedin.com/company/szaboscandic](https://www.linkedin.com/company/szaboscandic) 

# RNA Polymerase II Antibody

Rabbit Polyclonal

Antigen Affinity Purified      Protein ID    NP\_000928.1  
Catalog No.    A300-653A-T      GeneID      5430  
Lot No.      A300-653A-T-4



---

**APPLICATIONS**      WB, IP

**SPECIES REACTIVITY**      Human, Mouse

**AMOUNT**      20 µl (2 blots)

**CONCENTRATION**      40 µg/ml

**STORAGE/SHELF LIFE**      2 – 8° C / 1 year from date of receipt

**PHYSICAL STATE**      Liquid

**BUFFER**      Tris-buffered Saline containing 0.1% BSA and 0.09% Sodium Azide

**ISOTYPE**      IgG

**ORIGIN**      USA

**PRODUCTION PROCEDURES**      Antibody was affinity purified using an epitope specific to RNA Polymerase II immobilized on solid support.

The epitope recognized by A300-653A-T maps to the C-terminal repeat of human RNA Polymerase II (GeneID 5430).

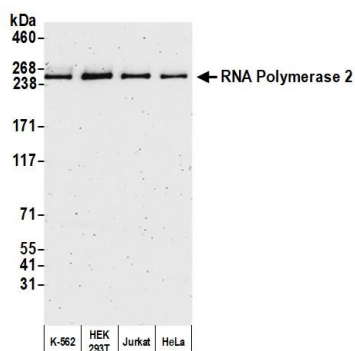
**APPLICATIONS**      Centrifuge tube to remove product from lid. Optimal working dilutions should be determined experimentally by the investigator. Prepare working dilution immediately before use.

Western Blot      1:1000

Immunoprecipitation      The antibody contained within A300-653A-T has been qualified for use in immunoprecipitation; however, we recommend using the alternative formulation of this antibody found as product A300-653A.

**ADDITIONAL INFO**      <https://www.bethyl.com/product/A300-653A-T>  
Use the link above to view SDS, a current list of citations, and other product specific information.  
IP-western blot protocol: [https://www.bethyl.com/content/protocol\\_IP\\_WB](https://www.bethyl.com/content/protocol_IP_WB)

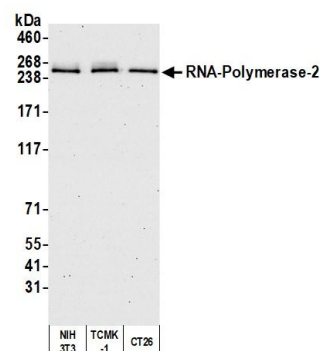
This document certifies that this product has met all of the quality control standards defined by Bethyl Laboratories, Inc.  
Eric McIntush, PhD | Chief Scientific Officer      Date: October 15, 2020



#### Detection of human RNA-Polymerase-2 by western blot.

*Samples:* Whole cell lysate (10 µg) from K-562, HEK293T, Jurkat, and HeLa cells prepared using NETN lysis buffer.

*Antibody:* Affinity purified rabbit anti-RNA-Polymerase-2 antibody A300-653A-T (lot A300-653A-T-4) used for WB at 1:1,000. *Detection:* Chemiluminescence with an exposure time of 3 minutes.



#### Detection of mouse RNA-Polymerase-2 by western blot.

*Samples:* Whole cell lysate (10 µg) from NIH 3T3, TCMK-1, and CT26 cells prepared using NETN lysis buffer. *Antibody:*

Affinity purified rabbit anti-RNA-Polymerase-2 antibody A300-653A-T (lot A300-653A-T-4) used for WB at 1:1,000. *Detection:* Chemiluminescence with an exposure time of 75 seconds.