



# SZABO SCANDIC

Part of Europa Biosite

## Produktinformation



Forschungsprodukte & Biochemikalien



Zellkultur & Verbrauchsmaterial



Diagnostik & molekulare Diagnostik



Laborgeräte & Service

Weitere Information auf den folgenden Seiten!  
See the following pages for more information!



### Lieferung & Zahlungsart

siehe unsere [Liefer- und Versandbedingungen](#)

### Zuschläge

- Mindermengenzuschlag
- Trockeneiszuschlag
- Gefahrgutzuschlag
- Expressversand

### SZABO-SCANDIC HandelsgmbH

Quellenstraße 110, A-1100 Wien

T. +43(0)1 489 3961-0

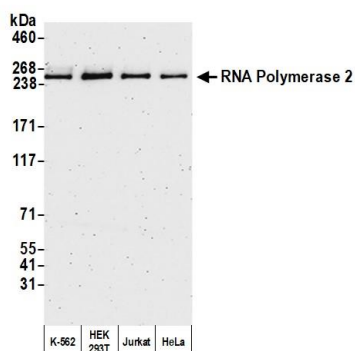
F. +43(0)1 489 3961-7

[mail@szabo-scandic.com](mailto:mail@szabo-scandic.com)

[www.szabo-scandic.com](http://www.szabo-scandic.com)

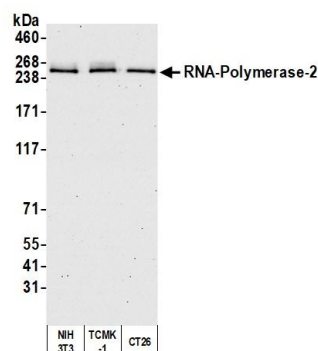
[linkedin.com/company/szaboscandic](https://www.linkedin.com/company/szaboscandic) 





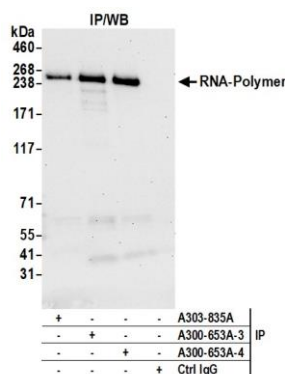
**Detection of human RNA-Polymerase-2 by western blot.**

*Samples:* Whole cell lysate (10 µg) from K-562, HEK293T, Jurkat, and HeLa cells prepared using NETN lysis buffer. *Antibody:* Affinity purified rabbit anti-RNA-Polymerase-2 antibody A300-653A (lot A300-653A-4) used for WB at 0.04 µg/ml. *Detection:* Chemiluminescence with an exposure time of 3 minutes.



**Detection of mouse RNA-Polymerase-2 by western blot.**

*Samples:* Whole cell lysate (10 µg) from NIH 3T3, TCMK-1, and CT26 cells prepared using NETN lysis buffer. *Antibody:* Affinity purified rabbit anti-RNA-Polymerase-2 antibody A300-653A (lot A300-653A-4) used for WB at 0.04 µg/ml. *Detection:* Chemiluminescence with an exposure time of 75 seconds.



**Detection of human RNA-Polymerase-2 by western blot of immunoprecipitates.**

*Samples:* Whole cell lysate (1.0 mg per IP reaction; 20% of IP loaded) from HeLa cells prepared using NETN lysis buffer. *Antibodies:* Affinity purified rabbit anti-RNA-Polymerase-2 antibody A300-653A (lot A300-653A-4) used for IP at 6 µg per reaction. RNA-Polymerase-2 was also immunoprecipitated by a previous lot of this antibody (lot A300-653A-3) and rabbit anti-RNA-Polymerase-2 antibody A303-835A. For blotting immunoprecipitated RNA-Polymerase-2, A300-653A was used at 0.04 µg/ml. *Detection:* Chemiluminescence with an exposure time of 30 seconds.