



SZABO SCANDIC

Part of Europa Biosite

Produktinformation



Forschungsprodukte & Biochemikalien



Zellkultur & Verbrauchsmaterial



Diagnostik & molekulare Diagnostik



Laborgeräte & Service

Weitere Information auf den folgenden Seiten!
See the following pages for more information!



Lieferung & Zahlungsart

siehe unsere [Liefer- und Versandbedingungen](#)

Zuschläge

- Mindermengenzuschlag
- Trockeneiszuschlag
- Gefahrgutzuschlag
- Expressversand

SZABO-SCANDIC HandelsgmbH

Quellenstraße 110, A-1100 Wien

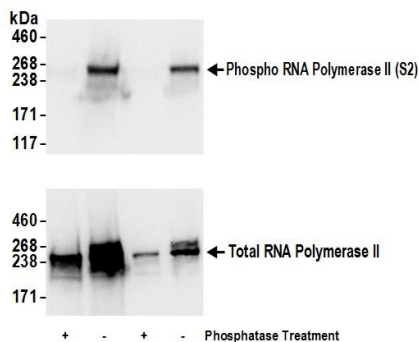
T. +43(0)1 489 3961-0

F. +43(0)1 489 3961-7

mail@szabo-scandic.com

www.szabo-scandic.com

[linkedin.com/company/szaboscandic](https://www.linkedin.com/company/szaboscandic) 



Detection of human Phospho RNA Polymerase II (S2) by western blot. *Samples:* Whole cell lysate (50 and 15 μ g) from HeLa prepared using NETN buffer. Lysate was mock treated (-) or treated with phosphatases (+). *Antibodies:* Affinity purified rabbit anti-Phospho RNA Polymerase II (S2) antibody A300-654A-T (lot A300-654A-T-3) was used for WB at 1:1000 (upper panel). To examine total RNA Polymerase II, rabbit anti-RNA Polymerase II antibody A300-653A was used at 1 μ g/ml (lower panel). *Detection:* Chemiluminescence with exposure time of 3 seconds.