



SZABO SCANDIC

Part of Europa Biosite

Produktinformation



Forschungsprodukte & Biochemikalien



Zellkultur & Verbrauchsmaterial



Diagnostik & molekulare Diagnostik



Laborgeräte & Service

Weitere Information auf den folgenden Seiten!
See the following pages for more information!



Lieferung & Zahlungsart

siehe unsere [Liefer- und Versandbedingungen](#)

Zuschläge

- Mindermengenzuschlag
- Trockeneiszuschlag
- Gefahrgutzuschlag
- Expressversand

SZABO-SCANDIC HandelsgmbH

Quellenstraße 110, A-1100 Wien

T. +43(0)1 489 3961-0

F. +43(0)1 489 3961-7

mail@szabo-scandic.com

www.szabo-scandic.com

[linkedin.com/company/szaboscandic](https://www.linkedin.com/company/szaboscandic) 

Phospho RNA Polymerase II (S2) Antibody

Rabbit Polyclonal

Antigen Affinity Purified Protein ID NP_000928.1

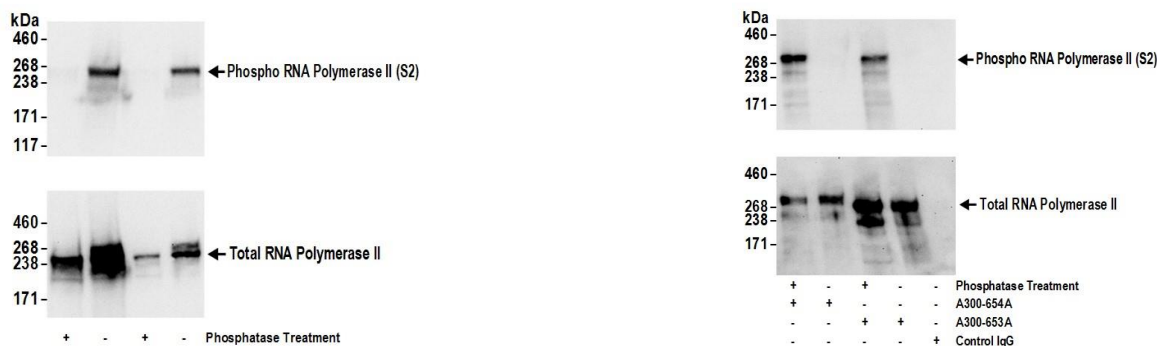
Catalog No. A300-654A GeneID 5430

Lot No. A300-654A-3



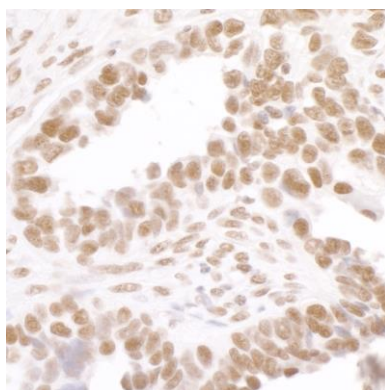
APPLICATIONS	WB, IP, IHC
SPECIES REACTIVITY	Human, Mouse
PRESUMED REACTIVITY	Based on 100% sequence identity, this antibody is predicted to react with <i>D. melanogaster</i>
AMOUNT	100 µl
CONCENTRATION	200 µg/ml
STORAGE/SHELF LIFE	2 – 8° C / 1 year from date of receipt
PHYSICAL STATE	Liquid
BUFFER	Tris-buffered Saline containing 0.1% BSA and 0.09% Sodium Azide
ISOTYPE	IgG
ORIGIN	USA
PRODUCTION PROCEDURES	<p>Antibody was affinity purified using an epitope specific to Phospho RNA Polymerase II (S2) immobilized on solid support.</p> <p>Immunogen for A300-654A was a phosphorylated synthetic peptide, which represented a portion of human RNA Polymerase II (GeneID 5430) around serine 2 of the C-terminal repeat YSPTSPS.</p> <p>Immunoglobulin concentration was determined by extinction coefficient: absorbance at 280 nm of 1.4 equals 1.0 mg of IgG.</p>
APPLICATIONS	<p>Centrifuge tube to remove product from lid. Optimal working dilutions should be determined experimentally by the investigator. Prepare working dilution immediately before use.</p> <p>Western Blot 1:2,000 – 1:10,000</p> <p>Immunoprecipitation 2 – 10 µg/mg lysate</p> <p>Immunohistochemistry 1:200 – 1:1,000. Epitope retrieval with citrate buffer pH 6.0 is recommended for FFPE tissue sections.</p>
APPLICATION NOTES	<p>Western blot of immunoprecipitates performed using Normal Pig Serum (Cat. No. S100-020), Goat anti-Rabbit Light Chain HRP Conjugate (Cat. No. A120-113P) and 4-8% SDS-PAGE (link to IP-western blot protocol in Additional Info section below).</p> <p>Western blot of lysates performed using standard western blot reagents and 4-8% SDS-PAGE.</p>
IHC HUMAN CONTROLS	Breast Carcinoma, Colon Carcinoma, Ovarian Carcinoma, Prostate Carcinoma, Stomach Adenocarcinoma
IHC MOUSE CONTROLS	Renal Cell Carcinoma, Squamous Cell Carcinoma, Teratoma
ADDITIONAL INFO	<p>https://www.bethyl.com/product/A300-654A</p> <p>Use the link above to view SDS, a current list of citations, and other product specific information.</p> <p>IP-western blot protocol: https://www.bethyl.com/content/protocol_IP_WB</p>

This document certifies that this product has met all of the quality control standards defined by Bethyl Laboratories, Inc.
Eric McIntush, PhD | Chief Scientific Officer Date: June 21, 2019

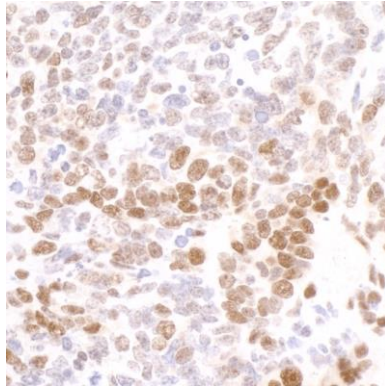


Detection of human Phospho RNA Polymerase II (S2) by western blot. *Samples:* Whole cell lysate (50 and 15 μ g) from HeLa prepared using NETN buffer. Lysate was mock treated (-) or treated with phosphatases (+). *Antibodies:* Affinity purified rabbit anti-Phospho RNA Polymerase II (S2) antibody A300-654A (lot A300-654A-3) was used for WB at 0.04 μ g/ml (upper panel). To examine total RNA Polymerase II, rabbit anti-RNA Polymerase II antibody A300-653A was used at 1 μ g/ml (lower panel). *Detection:* Chemiluminescence with exposure time of 3 seconds.

Detection of Phospho RNA Polymerase II (S2) by western blot of immunoprecipitates. *Samples:* Whole cell lysate (0.5 or 1 mg per IP reaction, 20% of IP loaded) from HeLa cells prepared using NETN lysis buffer. immunoprecipitates were either phosphatase treated (+) or mock treated (-). *Antibody:* Affinity purified rabbit anti-Phospho RNA Polymerase II (S2) antibody A300-654A (lot A300-654A-3) used for IP at 5 μ g per reaction and Affinity purified rabbit anti-RNA Polymerase II antibody A300-653A used for IP at 5 μ g per reaction. For blotting immunoprecipitated Phospho RNA Polymerase II (S2) and total RNA Polymerase II, A300-654A was used at 0.1 μ g/ml (upper panel) and A300-653A was used at 1 μ g/ml (lower panel). *Detection:* Chemiluminescence with an exposure time of 10 seconds (upper) and 75 seconds (lower).



Detection of human Phospho-RNA Polymerase II (S2) by immunohistochemistry. *Sample:* FFPE section of human ovarian carcinoma. *Antibody:* Affinity purified rabbit anti-Phospho-RNA Polymerase II (S2) (Cat. No. A300-654A Lot3) used at a dilution of 1:1000 (0.2 μ g/ml). *Detection:*



Detection of mouse Phospho-RNA Polymerase II (S2) by immunohistochemistry. *Sample:* FFPE section of mouse teratoma. *Antibody:* Affinity purified rabbit anti-Phospho-RNA Polymerase II (S2) (Cat. No. A300-654A Lot3) used at a dilution of 1:200 (1 µg/ml). *Detection:* DAB