



# SZABO SCANDIC

Part of Europa Biosite

## Produktinformation



Forschungsprodukte & Biochemikalien



Zellkultur & Verbrauchsmaterial



Diagnostik & molekulare Diagnostik



Laborgeräte & Service

Weitere Information auf den folgenden Seiten!  
See the following pages for more information!



### Lieferung & Zahlungsart

siehe unsere [Liefer- und Versandbedingungen](#)

### Zuschläge

- Mindermengenzuschlag
- Trockeneiszuschlag
- Gefahrgutzuschlag
- Expressversand

### SZABO-SCANDIC HandelsgmbH

Quellenstraße 110, A-1100 Wien

T. +43(0)1 489 3961-0

F. +43(0)1 489 3961-7

[mail@szabo-scandic.com](mailto:mail@szabo-scandic.com)

[www.szabo-scandic.com](http://www.szabo-scandic.com)

[linkedin.com/company/szaboscandic](https://www.linkedin.com/company/szaboscandic) 

# REA Antibody

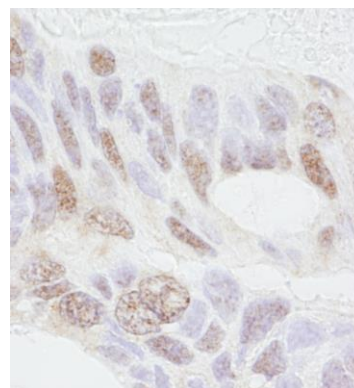
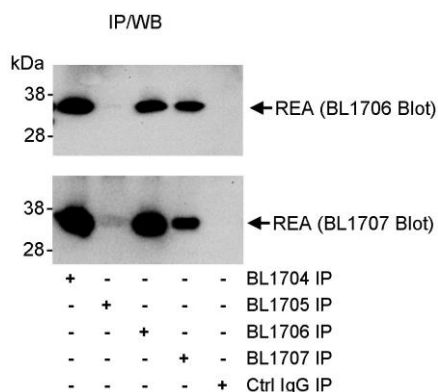
Rabbit Polyclonal

Antigen Affinity Purified      Protein ID    NP\_009204.1  
Catalog No.    A300-656A-T      GeneID      11331  
Lot No.      A300-656A-T-1



<b>APPLICATIONS</b>	IP, IHC
<b>SPECIES REACTIVITY</b>	Human
<b>PRESUMED REACTIVITY</b>	Based on 100% sequence identity, this antibody is predicted to react with Mouse and Orangutan
<b>AMOUNT</b>	10 µl
<b>CONCENTRATION</b>	1000 µg/ml
<b>STORAGE/SHELF LIFE</b>	2 - 8° C / 1 year from date of receipt
<b>PHYSICAL STATE</b>	Liquid
<b>BUFFER</b>	Tris-citrate/phosphate buffer, pH 7 to 8 containing 0.09% Sodium Azide
<b>ISOTYPE</b>	IgG
<b>ORIGIN</b>	USA
<b>PRODUCTION PROCEDURES</b>	Antibody was affinity purified using an epitope specific to REA immobilized on solid support.  The epitope recognized by A300-656A-T maps to a region between residues 1 and 50 of human Repressor of Estrogen Activity (Prohibitin 2) using the numbering given in entry NP_009204.1 (GeneID 11331).  Immunoglobulin concentration was determined by extinction coefficient: absorbance at 280 nm of 1.4 equals 1.0 mg of IgG.
<b>APPLICATIONS</b>	Centrifuge tube to remove product from lid. Optimal working dilutions should be determined experimentally by the investigator. Prepare working dilution immediately before use.  Western Blot      Not recommended. Use rabbit anti-REA Antibodies Cat. No. A300-657A or Cat No. A300-658A.  Immunoprecipitation    1 - 4 µg/mg lysate  Immunohistochemistry    1:1,000 - 1:5,000. Epitope retrieval with citrate buffer pH 6.0 is recommended for FFPE tissue sections.
<b>APPLICATION NOTES</b>	Western blot of immunoprecipitates performed using Normal Pig Serum (Cat. No. S100-020), Goat anti-Rabbit Light Chain HRP Conjugate (Cat. No. A120-113P) and 4-20% SDS-PAGE (link to IP-western blot protocol in Additional Info section below).
<b>ADDITIONAL INFO</b>	<a href="https://www.bethyl.com/product/A300-656A-T">https://www.bethyl.com/product/A300-656A-T</a> Use the link above to view SDS, a current list of citations, and other product specific information. IP-western blot protocol: <a href="https://www.bethyl.com/content/protocol_IP_WB">https://www.bethyl.com/content/protocol_IP_WB</a>

This document certifies that this product has met all of the quality control standards defined by Bethyl Laboratories, Inc.  
Eric McIntush, PhD | Chief Scientific Officer      Date: June 21, 2019



**Detection of human REA by western blot of immunoprecipitates.** *Samples:* Whole cell lysate (1 mg/IP, 20% of IP loaded) from HeLa cells. *Antibody:* Affinity purified rabbit anti-REA antibodies BL1704 (Cat. No. A300-656A-T), BL1705, BL1706 (Cat. No. A300-657A), BL1707 (A300-658A) each used for IP at 3 µg/mg lysate. immunoprecipitated REA was blotted using BL1706 (upper blot) or BL1707 (lower blot). *Detection:* Chemiluminescence with exposure times of 30 seconds (upper and lower).

**Detection of human REA by immunohistochemistry.** *Samples:* FFPE section of human ovarian carcinoma. *Antibody:* Affinity purified rabbit anti-REA (Cat. No. A300-656A-T Lot1) used at a dilution of 1:1,000 (1 µg/ml). *Detection:* DAB.