



SZABO SCANDIC

Part of Europa Biosite

Produktinformation



Forschungsprodukte & Biochemikalien



Zellkultur & Verbrauchsmaterial



Diagnostik & molekulare Diagnostik



Laborgeräte & Service

Weitere Information auf den folgenden Seiten!
See the following pages for more information!



Lieferung & Zahlungsart

siehe unsere [Liefer- und Versandbedingungen](#)

Zuschläge

- Mindermengenzuschlag
- Trockeneiszuschlag
- Gefahrgutzuschlag
- Expressversand

SZABO-SCANDIC HandelsgmbH

Quellenstraße 110, A-1100 Wien

T. +43(0)1 489 3961-0

F. +43(0)1 489 3961-7

mail@szabo-scandic.com

www.szabo-scandic.com

[linkedin.com/company/szaboscandic](https://www.linkedin.com/company/szaboscandic) 

Tip41 Antibody

Rabbit Polyclonal

Antigen Affinity Purified	Protein ID	NP_690866.1
Catalog No. A300-663A-T	GeneID	261726
Lot No. A300-663A-T-2		

APPLICATIONS	WB, IP, IHC
SPECIES REACTIVITY	Human, Mouse
AMOUNT	20 µl (2 blots)
CONCENTRATION	40 µg/ml
STORAGE/SHELF LIFE	2 – 8°C / 1 year from date of receipt
PHYSICAL STATE	Liquid
BUFFER	Tris-buffered Saline containing 0.1% BSA and 0.09% Sodium Azide
ISOTYPE	IgG
ORIGIN	USA
PRODUCTION PROCEDURES	Antibody was affinity purified using an epitope specific to Tip41 immobilized on solid support.

The epitope recognized by A300-663A-T maps to a region between residue 225 and the C-terminus (residue 272) of human TIP41, TOR-signaling Pathway Regulator-like using the numbering given in entry NP_690866.1 (GeneID 261726).

APPLICATIONS Centrifuge tube to remove product from lid. Optimal working dilutions should be determined experimentally by the investigator. Prepare working dilution immediately before use.

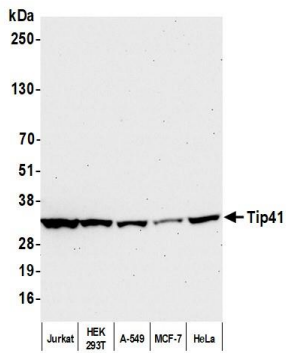
Western Blot 1:1000

Immunoprecipitation The antibody contained within A300-663A-T has been qualified for use in immunoprecipitation; however, we recommend using the alternative formulation of this antibody found as product A300-663A.

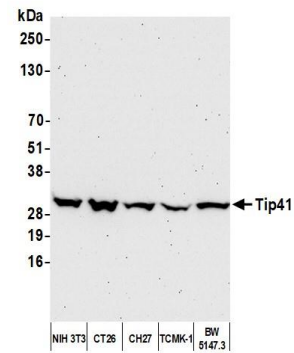
Immunohistochemistry 1:20 to 1:100. Epitope retrieval with Tris-EDTA pH9.0 is recommended for FFPE tissue sections.

ADDITIONAL INFO <https://www.bethyl.com/product/A300-663A-T>
Use the link above to view SDS, a current list of citations, and other product specific information.
IP-western blot protocol: https://www.bethyl.com/content/protocol_IP_WB

This document certifies that this product has met all of the quality control standards defined by Bethyl Laboratories, Inc.
Michael Spencer, PhD Date: December 2, 2021



Detection of human Tip41 by western blot. Samples: Whole cell lysate (50 μ g) from Jurkat, HEK293T, A-549, MCF-7, and HeLa cells prepared using NETN lysis buffer. **Antibody:** Affinity purified rabbit anti-Tip41 antibody (A300-663A-T lot 2) used for WB at 1:1000. **Detection:** Chemiluminescence with an exposure time of 30 seconds.



Detection of mouse Tip41 by western blot. Samples: Whole cell lysate (50 μ g) from NIH 3T3, CT26, CH27, TCMK-1, and BW5147.3 cells prepared using NETN lysis buffer. **Antibody:** Affinity purified rabbit anti-Tip41 antibody (A300-663A-T lot 2) used for WB at 1:1000. **Detection:** Chemiluminescence with an exposure time of 75 seconds.