



# SZABO SCANDIC

Part of Europa Biosite

## Produktinformation



Forschungsprodukte & Biochemikalien



Zellkultur & Verbrauchsmaterial



Diagnostik & molekulare Diagnostik



Laborgeräte & Service

Weitere Information auf den folgenden Seiten!  
See the following pages for more information!



### Lieferung & Zahlungsart

siehe unsere [Liefer- und Versandbedingungen](#)

### Zuschläge

- Mindermengenzuschlag
- Trockeneiszuschlag
- Gefahrgutzuschlag
- Expressversand

### SZABO-SCANDIC HandelsgmbH

Quellenstraße 110, A-1100 Wien

T. +43(0)1 489 3961-0

F. +43(0)1 489 3961-7

[mail@szabo-scandic.com](mailto:mail@szabo-scandic.com)

[www.szabo-scandic.com](http://www.szabo-scandic.com)

[linkedin.com/company/szaboscandic](https://www.linkedin.com/company/szaboscandic) 

# PARP10 Antibody

Rabbit Polyclonal

Antigen Affinity Purified

Protein ID NP\_116178.1

Catalog No. A300-665A

GeneID 84875

Lot No. A300-665A-3



**APPLICATIONS** WB, IP, IHC

**SPECIES REACTIVITY** Human

**AMOUNT** 100 µl

**CONCENTRATION** 1000 µg/ml

**STORAGE/SHELF LIFE** 2 – 8° C / 1 year from date of receipt

**PHYSICAL STATE** Liquid

**BUFFER** Tris-citrate/phosphate buffer, pH 7 to 8 containing 0.09% Sodium Azide

**ISOTYPE** IgG

**ORIGIN** USA

**PRODUCTION PROCEDURES** Antibody was affinity purified using an epitope specific to PARP10 immobilized on solid support.

The epitope recognized by A300-665A maps to a region between residue 300 and 350 of Poly (ADP-ribose) Polymerase Family, member 10 using the numbering given in entry NP\_116178.1 (GeneID 84875).

Immunoglobulin concentration was determined by extinction coefficient: absorbance at 280 nm of 1.4 equals 1.0 mg of IgG.

**APPLICATIONS** Centrifuge tube to remove product from lid. Optimal working dilutions should be determined experimentally by the investigator. Prepare working dilution immediately before use.

Western Blot 1:2,000: 1:10,000

Immunoprecipitation 2 – 10 µg/mg lysate

Immunohistochemistry 1:500 to 1:2,000. Epitope retrieval with citrate buffer pH6.0 is recommended for FFPE tissue sections.

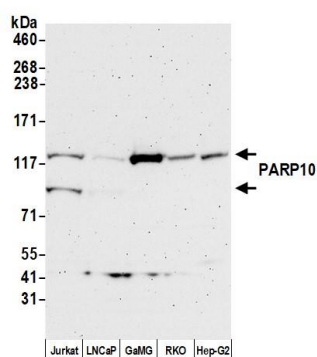
**IHC HUMAN CONTROLS** Breast Carcinoma, Colon Carcinoma, Ovarian Carcinoma, Skin Squamous Cell Carcinoma

**ADDITIONAL INFO** <https://www.bethyl.com/product/A300-665A>

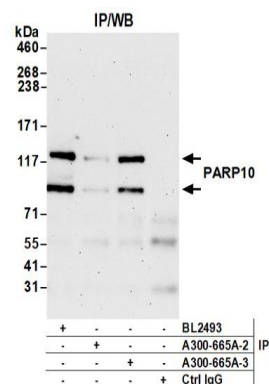
Use the link above to view SDS, a current list of citations, and other product specific information.

IP-western blot protocol: [https://www.bethyl.com/content/protocol\\_IP\\_WB](https://www.bethyl.com/content/protocol_IP_WB)

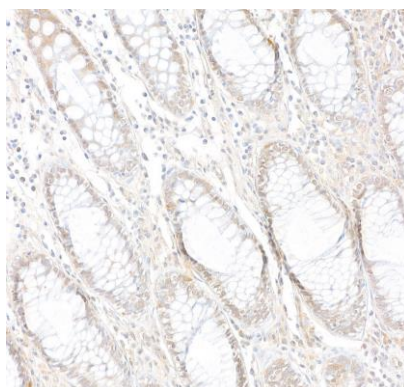
This document certifies that this product has met all of the quality control standards defined by Bethyl Laboratories, Inc.  
Eric McIntush, PhD | Chief Scientific Officer Date: September 24, 2020



**Detection of human PARP10 by western blot.** *Samples:* Whole cell lysate (50  $\mu$ g) from Jurkat, LNCaP, GaMG, RKO, and Hep-G2 cells prepared using NETN lysis buffer. *Antibody:* Affinity purified rabbit anti-PARP10 antibody A300-665A (lot A300-665A-3) used for WB at 0.1  $\mu$ g/ml. *Detection:* Chemiluminescence with an exposure time of 75 seconds.



**Detection of human PARP10 by western blot of immunoprecipitates.** *Samples:* Whole cell lysate (1.0 mg per IP reaction; 20% of IP loaded) from Jurkat cells prepared using NETN lysis buffer. *Antibodies:* Affinity purified rabbit anti-PARP10 antibody A300-665A (lot A300-665A-3) used for IP at 6  $\mu$ g per reaction. PARP10 was also immunoprecipitated by a previous lot of this antibody (lot A300-665A-2) and rabbit anti-PARP10 antibody BL2493. For blotting immunoprecipitated PARP10, A300-665A was used at 0.1  $\mu$ g/ml. *Detection:* Chemiluminescence with an exposure time of 75 seconds.



**Detection of human PARP10 by immunohistochemistry.** *Sample:* FFPE section of human colon carcinoma. *Antibody:* Affinity purified rabbit anti-PARP10 (Cat. No. A300-665A Lot3) used at a dilution of 1:1,000 (1  $\mu$ g/ml). *Detection:* DAB