



# SZABO SCANDIC

Part of Europa Biosite

## Produktinformation



Forschungsprodukte & Biochemikalien



Zellkultur & Verbrauchsmaterial



Diagnostik & molekulare Diagnostik



Laborgeräte & Service

Weitere Information auf den folgenden Seiten!  
See the following pages for more information!



### Lieferung & Zahlungsart

siehe unsere [Liefer- und Versandbedingungen](#)

### Zuschläge

- Mindermengenzuschlag
- Trockeneiszuschlag
- Gefahrgutzuschlag
- Expressversand

### SZABO-SCANDIC HandelsgmbH

Quellenstraße 110, A-1100 Wien

T. +43(0)1 489 3961-0

F. +43(0)1 489 3961-7

[mail@szabo-scandic.com](mailto:mail@szabo-scandic.com)

[www.szabo-scandic.com](http://www.szabo-scandic.com)

[linkedin.com/company/szaboscandic](https://www.linkedin.com/company/szaboscandic) 

# MAML1 Antibody

Rabbit Polyclonal

Antigen Affinity Purified	RefSeq ID	NP_055572.1
Catalog No. A300-672A-T	Uniprot ID	Q92585
Lot No. 2	GeneID	9794

---

<b>APPLICATIONS</b>	WB, IP
<b>SPECIES REACTIVITY</b>	Human
<b>AMOUNT</b>	10 µl
<b>CONCENTRATION</b>	1000 µg/ml
<b>STORAGE/SHELF LIFE</b>	2 – 8°C / 1 year from date of receipt
<b>PHYSICAL STATE</b>	Liquid
<b>BUFFER</b>	Tris-citrate/phosphate buffer, pH 7 to 8 containing 0.09% Sodium Azide
<b>ISOTYPE</b>	IgG
<b>ORIGIN</b>	USA
<b>PRODUCTION PROCEDURES</b>	Antibody was affinity purified using an epitope specific to MAML1 immobilized on solid support.

The epitope recognized by A300-672A maps to a region between residue 75 and 125 of human Mastermind-like 1 using the numbering given in entry NP\_055572.1 (GeneID 9794).

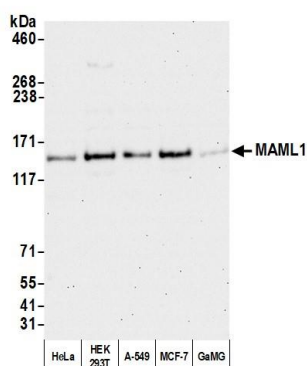
Immunoglobulin concentration was determined using Beer's Law where 1 mg/mL IgG has an A280 of 1.4.

<b>APPLICATIONS</b>	Centrifuge tube to remove product from lid. Optimal working dilutions should be determined experimentally by the investigator. Prepare working dilution immediately before use.
	Western Blot                      1:10,000 – 1:25,000
	Immunoprecipitation          6 µg/mg lysate

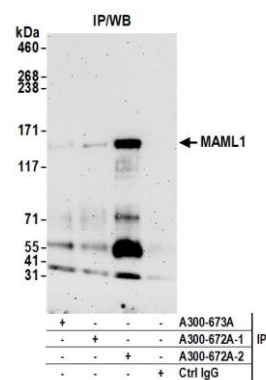
<b>IHC HUMAN CONTROLS</b>	Breast Carcinoma, Ovarian Carcinoma
---------------------------	-------------------------------------

<b>ADDITIONAL INFO</b>	<a href="https://www.fortislife.com/p/A300-672A-T">https://www.fortislife.com/p/A300-672A-T</a> Use the link above to view SDS, a current list of citations, and other product specific information.
------------------------	---

This document certifies that this product has met all of the quality control standards defined by Bethyl Laboratories, Inc.  
Michael Spencer, PhD Date: January 31, 2024



**Detection of human MAML1 by western blot.** *Samples:* Whole cell lysate (50  $\mu$ g) from HeLa, HEK293T, A-549, MCF-7, and GaMG cells prepared using NETN lysis buffer. *Antibody:* Affinity purified rabbit anti-MAML1 antibody A300-672A (lot A300-672A-2) used for WB at 0.04  $\mu$ g/ml. *Detection:* Chemiluminescence with an exposure time of 30 seconds.



**Detection of human MAML1 by western blot of immunoprecipitates.** *Samples:* Whole cell lysate (1.0 mg per IP reaction; 20% of IP loaded) from HeLa cells prepared using NETN lysis buffer. *Antibodies:* Affinity purified rabbit anti-MAML1 antibody A300-672A (lot 2) used for IP at 6  $\mu$ g per reaction. MAML1 was also immunoprecipitated by a previous lot of this antibody (lot 1) and rabbit anti-MAML1 antibody A300-673A. For blotting immunoprecipitated MAML1, A300-672A was used at 0.04  $\mu$ g/ml. *Detection:* Chemiluminescence with an exposure time of 3 minutes.