



SZABO SCANDIC

Part of Europa Biosite

Produktinformation



Forschungsprodukte & Biochemikalien



Zellkultur & Verbrauchsmaterial



Diagnostik & molekulare Diagnostik



Laborgeräte & Service

Weitere Information auf den folgenden Seiten!
See the following pages for more information!



Lieferung & Zahlungsart

siehe unsere [Liefer- und Versandbedingungen](#)

Zuschläge

- Mindermengenzuschlag
- Trockeneiszuschlag
- Gefahrgutzuschlag
- Expressversand

SZABO-SCANDIC HandelsgmbH

Quellenstraße 110, A-1100 Wien

T. +43(0)1 489 3961-0

F. +43(0)1 489 3961-7

mail@szabo-scandic.com

www.szabo-scandic.com

[linkedin.com/company/szaboscandic](https://www.linkedin.com/company/szaboscandic) 

MAML3 Antibody

Rabbit Polyclonal

Antigen Affinity Purified	RefSeq ID	NP_061187.2
Catalog No. A300-683A-T	Uniprot ID	Q96JK9
Lot No. 2	GeneID	55534

APPLICATIONS	WB, IP, IHC
SPECIES REACTIVITY	Human
AMOUNT	10 µl
CONCENTRATION	1000 µg/ml
STORAGE/SHELF LIFE	2 – 8°C / 1 year from date of receipt
PHYSICAL STATE	Liquid
BUFFER	Tris-citrate/phosphate buffer, pH 7 to 8 containing 0.09% Sodium Azide
ISOTYPE	IgG
ORIGIN	USA
PRODUCTION PROCEDURES	Antibody was affinity purified using an epitope specific to MAML3 immobilized on solid support.

The epitope recognized by A300-683A maps to a region between residue 150 and 200 of human Mastermind-Like 3 using the numbering given in entry NP_061187.2 (GeneID 55534).

Immunoglobulin concentration was determined using Beer's Law where 1mg/mL IgG has an A280 of 1.4.

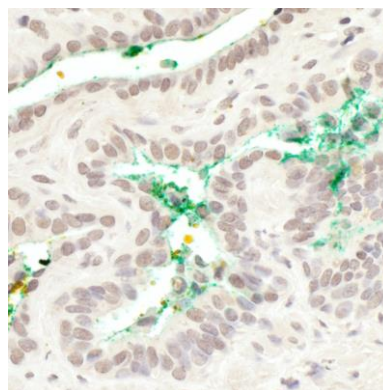
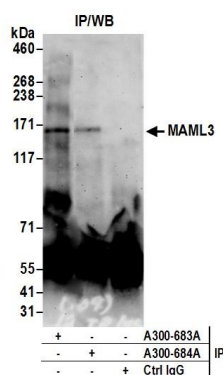
APPLICATIONS Centrifuge tube to remove product from lid. Optimal working dilutions should be determined experimentally by the investigator. Prepare working dilution immediately before use.

Western Blot	1:2000 – 1:10,000
Immunoprecipitation	6 µg/mg lysate
Immunohistochemistry	1:500 – 1:2000. Epitope retrieval with Tris-EDTA pH 9.0 is recommended for FFPE tissue sections.

IHC HUMAN CONTROLS Breast Carcinoma, Prostate Carcinoma

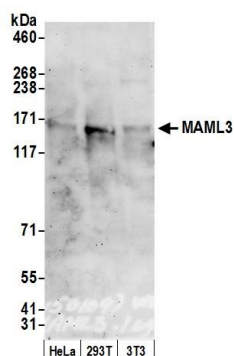
ADDITIONAL INFO <https://www.fortislife.com/p/A300-683A-T>
Use the link above to view SDS, a current list of citations, and other product specific information.

This document certifies that this product has met all of the quality control standards defined by Bethyl Laboratories, Inc.
Michael Spencer, PhD Date: January 31, 2024



Detection of human MAML3 by western blot of immunoprecipitates. *Samples:* Whole cell lysate (0.5 or 1.0 mg per IP reaction; 20% of IP loaded) from HEK293T cells prepared using NETN lysis buffer. *Antibodies:* Affinity purified rabbit anti-MAML3 antibody A300-683A (lot A300-683A-2) used for IP at 6 µg per reaction. MAML3 was also immunoprecipitated by rabbit anti-MAML3 antibody A300-684A. For blotting immunoprecipitated MAML3, A300-683A was used at 1 µg/ml. *Detection:* Chemiluminescence with an exposure time of 3 minutes.

Detection of human MAML3 by immunohistochemistry. *Sample:* FFPE section of human prostate carcinoma. *Antibody:* Affinity purified rabbit anti-MAML3 (Cat. No. A300-683A Lot2) used at a dilution of 1:1,000 (1 µg/ml). *Detection:* DAB



Detection of human and mouse MAML3 by western blot.

Samples: Whole cell lysate (50 µg) from HeLa, HEK293T, and mouse NIH 3T3 cells prepared using NETN lysis buffer. *Antibody:* Affinity purified rabbit anti-MAML3 antibody A300-683A (lot A300-683A-2) used for WB at 0.1 µg/ml. *Detection:* Chemiluminescence with an exposure time of 3 minutes.