



# SZABO SCANDIC

Part of Europa Biosite

## Produktinformation



Forschungsprodukte & Biochemikalien



Zellkultur & Verbrauchsmaterial



Diagnostik & molekulare Diagnostik



Laborgeräte & Service

Weitere Information auf den folgenden Seiten!  
See the following pages for more information!



### Lieferung & Zahlungsart

siehe unsere [Liefer- und Versandbedingungen](#)

### Zuschläge

- Mindermengenzuschlag
- Trockeneiszuschlag
- Gefahrgutzuschlag
- Expressversand

### SZABO-SCANDIC HandelsgmbH

Quellenstraße 110, A-1100 Wien

T. +43(0)1 489 3961-0

F. +43(0)1 489 3961-7

[mail@szabo-scandic.com](mailto:mail@szabo-scandic.com)

[www.szabo-scandic.com](http://www.szabo-scandic.com)

[linkedin.com/company/szaboscandic](https://www.linkedin.com/company/szaboscandic) 

# MAML3 Antibody

Rabbit Polyclonal

Antigen Affinity Purified

Protein ID NP\_061187.2

Catalog No. A300-684A-T

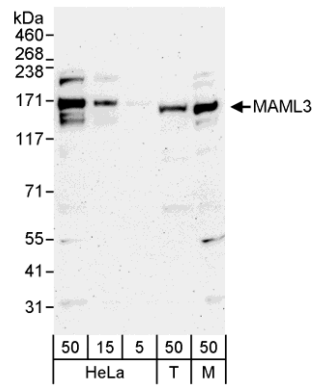
Gene ID 55534

Lot No. A300-684A-T-1



<b>APPLICATIONS</b>	WB, IP, IHC-P, IF
<b>REACTIVITY TESTED</b>	Human, Mouse
<b>PRESUMED REACTIVITY</b>	Based on 100% sequence identity, this antibody is predicted to react with Rat, <i>X. tropicalis</i> , Bovine, Dog, Horse, Rabbit, Guinea pig_10141, Pig, Panda, Orangutan, Rhesus Monkey, Gorilla, Chimpanzee, Duckbill platypus, Tasmanian devil, White-tufted-ear marmoset and Northern white-cheeked gibbon.
<b>ISOTYPE</b>	IgG
<b>AMOUNT</b>	20 µl (2 blots)
<b>STORAGE/SHELF LIFE</b>	2 - 8° C / 1 year from date of receipt
<b>PHYSICAL STATE</b>	Liquid
<b>BUFFER</b>	Tris-buffered Saline with 0.1% BSA containing 0.09% Sodium Azide
<b>ORIGIN</b>	USA
<b>PRODUCTION PROCEDURES</b>	Antibody was affinity purified using an epitope specific to MAML3 immobilized on solid support.  The epitope recognized by A300-684A-T maps to a region between residue 1100 and the C-terminus (residue 1133) human Mastermind-Like 3 using the numbering given in entry NP_061187.2 (GeneID 55534).
<b>APPLICATIONS</b>	Centrifuge tube to remove product from lid. Optimal working dilutions should be determined experimentally by the investigator. Prepare working dilution immediately before use.  Western Blot 1:1000  Immunoprecipitation The antibody contained within A300-684A-T has been qualified for use in immunoprecipitation; however, we recommend using the alternative formulation of this antibody found as product A300-684A.  Immunohistochemistry 1:40 to 1:200. Epitope retrieval with Tris-EDTA pH9.0 is recommended for FFPE tissue sections.  Immunofluorescence 1:20 to 1:100
<b>APPLICATION NOTES</b>	Validation by IP/Western Blot was performed using a 4-8% SDS-PAGE gel and ReliaBLOT® Reagents (Cat. No. WB120).
<b>ADDITIONAL INFO</b>	<a href="http://www.bethyl.com/product/A300-684A-T">http://www.bethyl.com/product/A300-684A-T</a>  Use the link above to view SDS, a current list of citations, and other product specific information.

# MAML3 Antibody: A300-684A-T



## Detection of Human and Mouse MAML3 by Western Blot.

*Samples:* Whole cell lysate from HeLa (5, 15, and 50  $\mu$ g), 293T (T; 50  $\mu$ g) and mouse NIH3T3 (M; 50  $\mu$ g) cells. *Antibody:* Affinity purified rabbit anti-MAML3 antibody A300-684A-T used at 1:1000. *Detection:* Chemiluminescence with an exposure time of 3 minutes.