



SZABO SCANDIC

Part of Europa Biosite

Produktinformation



Forschungsprodukte & Biochemikalien



Zellkultur & Verbrauchsmaterial



Diagnostik & molekulare Diagnostik



Laborgeräte & Service

Weitere Information auf den folgenden Seiten!
See the following pages for more information!



Lieferung & Zahlungsart

siehe unsere [Liefer- und Versandbedingungen](#)

Zuschläge

- Mindermengenzuschlag
- Trockeneiszuschlag
- Gefahrgutzuschlag
- Expressversand

SZABO-SCANDIC HandelsgmbH

Quellenstraße 110, A-1100 Wien

T. +43(0)1 489 3961-0

F. +43(0)1 489 3961-7

mail@szabo-scandic.com

www.szabo-scandic.com

[linkedin.com/company/szaboscandic](https://www.linkedin.com/company/szaboscandic) 

MAML3 Antibody

Rabbit Polyclonal

Antigen Affinity Purified

Catalog No. A300-684A

Lot No. A300-684A-1

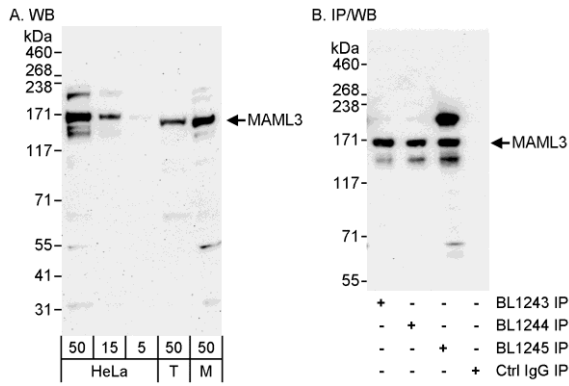
Protein ID NP_061187.2

Gene ID 55534

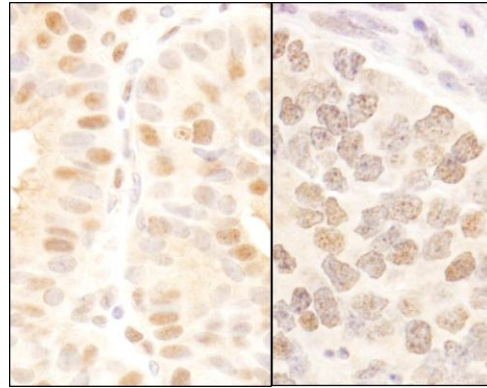


APPLICATIONS	WB, IP, IHC-P, IF								
REACTIVITY TESTED	Human, Mouse								
PRESUMED REACTIVITY	Based on 100% sequence identity, this antibody is predicted to react with Rat, <i>X. tropicalis</i> , Bovine, Dog, Horse, Rabbit, Guinea pig_10141, Pig, Panda, Orangutan, Rhesus Monkey, Gorilla, Chimpanzee, Duckbill platypus, Tasmanian devil, White-tufted-ear marmoset and Northern white-cheeked gibbon.								
ISOTYPE	IgG								
AMOUNT	0.1 ml at 0.2 mg/ml								
STORAGE/SHELF LIFE	2 - 8° C / 1 year from date of receipt								
PHYSICAL STATE	Liquid								
BUFFER	Tris-buffered Saline with 0.1% BSA containing 0.09% Sodium Azide								
ORIGIN	USA								
PRODUCTION PROCEDURES	<p>Antibody was affinity purified using an epitope specific to MAML3 immobilized on solid support.</p> <p>The epitope recognized by A300-684A maps to a region between residue 1100 and the C-terminus (residue 1133) human Mastermind-Like 3 using the numbering given in entry NP_061187.2 (GeneID 55534).</p> <p>Immunoglobulin concentration was determined by extinction coefficient: absorbance at 280 nm of 1.4 equals 1.0 mg of IgG.</p>								
APPLICATIONS	<p>Centrifuge tube to remove product from lid. Optimal working dilutions should be determined experimentally by the investigator. Prepare working dilution immediately before use.</p> <table><tr><td>Western Blot</td><td>1:2,000 - 1:10,000</td></tr><tr><td>Immunoprecipitation</td><td>1 to 4 µg/mg of lysate</td></tr><tr><td>Immunohistochemistry</td><td>1:200 to 1:1,000. Epitope retrieval with Tris-EDTA pH9.0 is recommended for FFPE tissue sections.</td></tr><tr><td>Immunofluorescence</td><td>1:100 to 1:500.</td></tr></table>	Western Blot	1:2,000 - 1:10,000	Immunoprecipitation	1 to 4 µg/mg of lysate	Immunohistochemistry	1:200 to 1:1,000. Epitope retrieval with Tris-EDTA pH9.0 is recommended for FFPE tissue sections.	Immunofluorescence	1:100 to 1:500.
Western Blot	1:2,000 - 1:10,000								
Immunoprecipitation	1 to 4 µg/mg of lysate								
Immunohistochemistry	1:200 to 1:1,000. Epitope retrieval with Tris-EDTA pH9.0 is recommended for FFPE tissue sections.								
Immunofluorescence	1:100 to 1:500.								
APPLICATION NOTES	<p>Validation by IP/Western Blot was performed using a 4-8% SDS-PAGE gel and ReliaBLOT® Reagents (Cat. No. WB120).</p> <p>IHC validation was performed using Immunohistochemistry Accessory Kit (Cat. # IHC-101). Epitope Retrieval Buffer- High pH Concentrate (Cat. # IHC-101J) was substituted for Epitope Retrieval Buffer - Reduced pH Concentrate.</p>								
IHC HUMAN CONTROLS	Breast Carcinoma, Lung Adenocarcinoma, Prostate Carcinoma								
ADDITIONAL INFO	<p>http://www.bethyl.com/product/A300-684A</p> <p>Use the link above to view SDS, a current list of citations, and other product specific information.</p>								

MAML3 Antibody : A300-684A



Detection of Human and Mouse MAML3 by Western Blot (h and m) and Immunoprecipitation (m). *Samples:* Whole cell lysate from HeLa (5, 15 and 50 μ g for WB; 1 mg for IP, 20% of IP loaded), 293T (T; 50 μ g) and mouse NIH3T3 (M; 50 μ g) cells. *Antibodies:* Affinity purified rabbit anti-MAML3 antibody BL1245 (Cat. No. A300-684A) used for WB at 0.04 μ g/ml (A) and 1 μ g/ml (B), and used for IP at 3 μ g/mg lysate. MAML3 was also immunoprecipitated by rabbit anti-MAML3 antibodies BL1243 and BL1244 (Cat. No. A300-683A). *Detection:* Chemiluminescence with exposure times of 3 minutes (A) and 30 seconds (B).



Detection of Human and Mouse MAML3 by Immunohistochemistry. *Sample:* FFPE section of human breast carcinoma and mouse teratoma. *Antibody:* Affinity purified rabbit anti-MAML3 (Cat. No. A300-684A Lot1) used at a dilution of 1:200 (1 μ g/ml). *Detection:* DAB