



# SZABO SCANDIC

Part of Europa Biosite

## Produktinformation



Forschungsprodukte & Biochemikalien



Zellkultur & Verbrauchsmaterial



Diagnostik & molekulare Diagnostik



Laborgeräte & Service

Weitere Information auf den folgenden Seiten!  
See the following pages for more information!



### Lieferung & Zahlungsart

siehe unsere [Liefer- und Versandbedingungen](#)

### Zuschläge

- Mindermengenzuschlag
- Trockeneiszuschlag
- Gefahrgutzuschlag
- Expressversand

### SZABO-SCANDIC HandelsgmbH

Quellenstraße 110, A-1100 Wien

T. +43(0)1 489 3961-0

F. +43(0)1 489 3961-7

[mail@szabo-scandic.com](mailto:mail@szabo-scandic.com)

[www.szabo-scandic.com](http://www.szabo-scandic.com)

[linkedin.com/company/szaboscandic](https://www.linkedin.com/company/szaboscandic) 

# RPL26 Antibody

Rabbit Polyclonal

Antigen Affinity Purified	Protein ID	NP_000978.1
Catalog No. A300-686A	GeneID	6154
Lot No. A300-686A-1		



<b>APPLICATIONS</b>	WB, IP, IHC
<b>SPECIES REACTIVITY</b>	Human, Mouse
<b>PRESUMED REACTIVITY</b>	Based on 100% sequence identity, this antibody is predicted to react with Rat, Chicken and Bovine
<b>AMOUNT</b>	100 µl
<b>CONCENTRATION</b>	200 µg/ml
<b>STORAGE/SHELF LIFE</b>	2 – 8° C / 1 year from date of receipt
<b>PHYSICAL STATE</b>	Liquid
<b>BUFFER</b>	Tris-buffered Saline containing 0.1% BSA and 0.09% Sodium Azide
<b>ISOTYPE</b>	IgG
<b>ORIGIN</b>	USA
<b>PRODUCTION PROCEDURES</b>	Antibody was affinity purified using an epitope specific to RPL26 immobilized on solid support.

The epitope recognized by A300-686A maps to a region between residue 100 and the C-terminus (residue 145) of human Ribosomal Protein L26 using the numbering given in entry NP\_000978.1 (GeneID 6154).

Immunoglobulin concentration was determined by extinction coefficient: absorbance at 280 nm of 1.4 equals 1.0 mg of IgG.

**APPLICATIONS** Centrifuge tube to remove product from lid. Optimal working dilutions should be determined experimentally by the investigator. Prepare working dilution immediately before use.

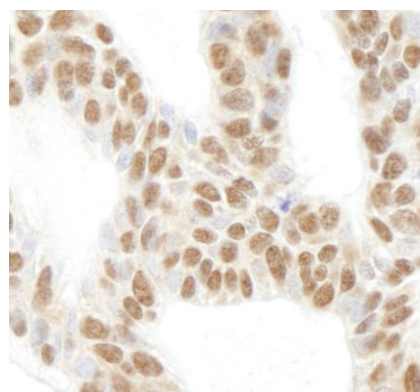
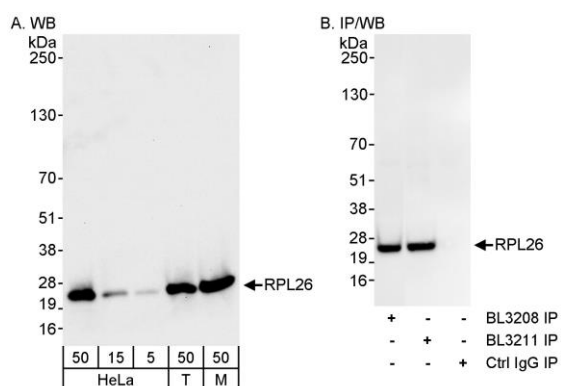
Western Blot	1:2,500 – 1:10,000
Immunoprecipitation	1 – 4 µg/mg lysate
Immunohistochemistry	1:200 – 1:1,000. Epitope retrieval with citrate buffer pH 6.0 is recommended for FFPE tissue sections.

**APPLICATION NOTES** Western blot of immunoprecipitates performed using Normal Pig Serum (Cat. No. S100-020), Goat anti-Rabbit Light Chain HRP Conjugate (Cat. No. A120-113P) and 4-12% SDS-PAGE (link to IP-western blot protocol in Additional Info section below).

**IHC HUMAN CONTROLS** Western blot of lysates performed using standard western blot reagents and 4-12% SDS-PAGE. Laryngeal Squamous Cell Carcinoma, Ovarian Carcinoma, Skin Basal Cell Carcinoma, Testicular Seminoma

**ADDITIONAL INFO** <https://www.bethyl.com/product/A300-686A>  
Use the link above to view SDS, a current list of citations, and other product specific information. IP-western blot protocol: [https://www.bethyl.com/content/protocol\\_IP\\_WB](https://www.bethyl.com/content/protocol_IP_WB)

This document certifies that this product has met all of the quality control standards defined by Bethyl Laboratories, Inc.  
Eric McIntush, PhD | Chief Scientific Officer Date: June 21, 2019



**Detection of human and mouse RPL26 by western blot (h and m) and immunoprecipitation (m).** *Samples:* Whole cell lysate from HeLa (5, 15 and 50 µg for WB; 1 mg for IP, 20% of IP loaded), HEK293T (T; 50 µg) and mouse NIH 3T3 (M; 50 µg) cells. *Antibodies:* Affinity purified rabbit anti-RPL26 antibody BL3211 (Cat. No. A300-686A) used for WB at 0.04 µg/ml (A) and 1 µg/ml (B), and used for IP at 3 µg/mg lysate. RPL26 was also immunoprecipitated by rabbit anti-RPL26 antibody BL3208 (Cat. No. A300-685A). *Detection:* Chemiluminescence with exposure times of 30 seconds (A) and 3 seconds (B).

**Detection of human expndt-4 RPL26 by immunohistochemistry.** *Sample:* FFPE section of human skin carcinoma. *Antibody:* Affinity purified rabbit anti-expndt-4 RPL26 (Cat. No. A300-686A Lot1) used at a dilution of 1:200 (1 µg/ml). *Detection:* DAB