



SZABO SCANDIC

Part of Europa Biosite

Produktinformation



Forschungsprodukte & Biochemikalien



Zellkultur & Verbrauchsmaterial



Diagnostik & molekulare Diagnostik



Laborgeräte & Service

Weitere Information auf den folgenden Seiten!
See the following pages for more information!



Lieferung & Zahlungsart

siehe unsere [Liefer- und Versandbedingungen](#)

Zuschläge

- Mindermengenzuschlag
- Trockeneiszuschlag
- Gefahrgutzuschlag
- Expressversand

SZABO-SCANDIC HandelsgmbH

Quellenstraße 110, A-1100 Wien

T. +43(0)1 489 3961-0

F. +43(0)1 489 3961-7

mail@szabo-scandic.com

www.szabo-scandic.com

[linkedin.com/company/szaboscandic](https://www.linkedin.com/company/szaboscandic) 

CDX2 Antibody

Rabbit Polyclonal

Antigen Affinity Purified

Protein ID NP_001256.1

Catalog No. A300-692A

GeneID 1045

Lot No. A300-692A-1



APPLICATIONS	WB, IP, IHC
SPECIES REACTIVITY	Human
AMOUNT	100 µl
CONCENTRATION	200 µg/ml
STORAGE/SHELF LIFE	2 - 8° C / 1 year from date of receipt
PHYSICAL STATE	Liquid
BUFFER	Tris-buffered Saline containing 0.1% BSA and 0.09% Sodium Azide
ISOTYPE	IgG
ORIGIN	USA
PRODUCTION PROCEDURES	Antibody was affinity purified using an epitope specific to CDX2 immobilized on solid support.

The epitope recognized by A300-692A maps to a region between residue 275 and the C-terminus (residue 313) of human Caudal Type Homeobox Transcription Factor 2 using the numbering given in entry NP_001256.1 (GeneID 1045).

Immunoglobulin concentration was determined by extinction coefficient: absorbance at 280 nm of 1.4 equals 1.0 mg of IgG.

APPLICATIONS Centrifuge tube to remove product from lid. Optimal working dilutions should be determined experimentally by the investigator. Prepare working dilution immediately before use.

Western Blot 1:2,000 – 1:10,000

Immunoprecipitation 1 – 4 µg/mg lysate

Immunohistochemistry 1:200 – 1:1,000. Epitope retrieval with citrate buffer pH 6.0 is recommended for FFPE tissue sections.

APPLICATION NOTES Western blot of immunoprecipitates performed using Normal Pig Serum (Cat. No. S100-020), Goat anti-Rabbit Light Chain HRP Conjugate (Cat. No. A120-113P) and 4-20% SDS-PAGE (link to IP-western blot protocol in Additional Info section below).

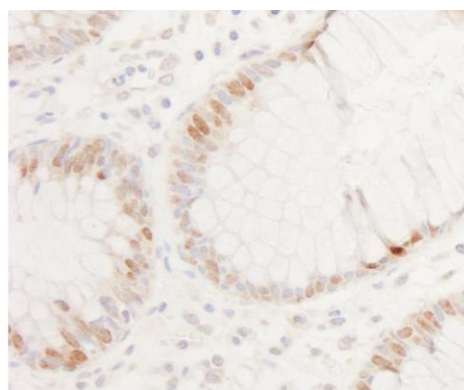
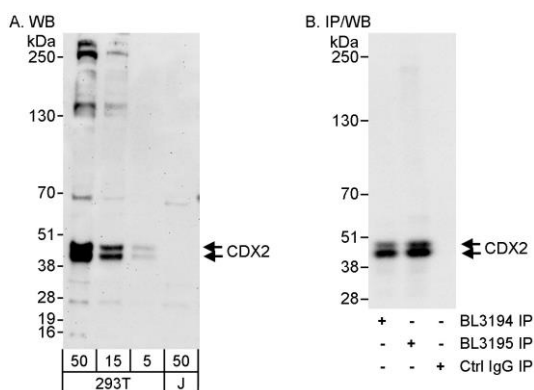
IHC HUMAN CONTROLS Western blot of lysates performed using standard western blot reagents and 4-20% SDS-PAGE. Colon Carcinoma, Ovarian Carcinoma

ADDITIONAL INFO <https://www.bethyl.com/product/A300-692A>

Use the link above to view SDS, a current list of citations, and other product specific information.

IP-western blot protocol: https://www.bethyl.com/content/protocol_IP_WB

This document certifies that this product has met all of the quality control standards defined by Bethyl Laboratories, Inc.
Eric McIntush, PhD | Chief Scientific Officer Date: June 21, 2019



Detection of human CDX2 by western blot and immunoprecipitation. *Samples:* Whole cell lysate from HEK293T (5, 15 and 50 μg for WB; 1 mg for IP, 20% of IP loaded) and Jurkat (J; 50 μg) cells. *Antibodies:* Affinity purified rabbit anti-CDX2 antibody BL3195 (Cat. No. A300-692A) used for WB at 0.04 $\mu\text{g}/\text{ml}$ (A) and 1 $\mu\text{g}/\text{ml}$ (B) and used for IP at 3 $\mu\text{g}/\text{mg}$ lysate. CDX2 was also immunoprecipitated by rabbit anti-CDX2 antibody BL3194 (Cat. No. A300-691A) using 3 $\mu\text{g}/\text{mg}$ lysate. *Detection:* Chemiluminescence with exposure times of 3 minutes (A) and 10 seconds (B).

Detection of human CDX2 by immunohistochemistry. *Sample:* FFPE section of human colon carcinoma. *Antibody:* Affinity purified rabbit anti-CDX2 (Cat. No. A300-692A Lot1) used at a dilution of 1:1,000 (0.2 $\mu\text{g}/\text{ml}$). *Detection:* DAB