



# SZABO SCANDIC

Part of Europa Biosite

## Produktinformation



Forschungsprodukte & Biochemikalien



Zellkultur & Verbrauchsmaterial



Diagnostik & molekulare Diagnostik



Laborgeräte & Service

Weitere Information auf den folgenden Seiten!  
See the following pages for more information!



### Lieferung & Zahlungsart

siehe unsere [Liefer- und Versandbedingungen](#)

### Zuschläge

- Mindermengenzuschlag
- Trockeneiszuschlag
- Gefahrgutzuschlag
- Expressversand

### SZABO-SCANDIC HandelsgmbH

Quellenstraße 110, A-1100 Wien

T. +43(0)1 489 3961-0

F. +43(0)1 489 3961-7

[mail@szabo-scandic.com](mailto:mail@szabo-scandic.com)

[www.szabo-scandic.com](http://www.szabo-scandic.com)

[linkedin.com/company/szaboscandic](https://www.linkedin.com/company/szaboscandic) 

# p38 MAPK Antibody

Rabbit Polyclonal

Antigen Affinity Purified      Protein ID    NP\_001306.1  
Catalog No.    A300-707A      GeneID      1432  
Lot No.      A300-707A-1



**APPLICATIONS**      WB, IP  
**SPECIES REACTIVITY**    Human, Mouse  
**PRESUMED REACTIVITY**    Based on 100% sequence identity, this antibody is predicted to react with Rat, Dog and Chimpanzee  
**AMOUNT**      100 µl  
**CONCENTRATION**      200 µg/ml  
**STORAGE/SHELF LIFE**    2 – 8° C / 1 year from date of receipt  
**PHYSICAL STATE**      Liquid  
**BUFFER**      Tris-buffered Saline containing 0.1% BSA and 0.09% Sodium Azide  
**ISOTYPE**      IgG  
**ORIGIN**      USA  
**PRODUCTION PROCEDURES**    Antibody was affinity purified using an epitope specific to p38 MAPK immobilized on solid support.

The epitope recognized by A300-707A maps to a region between residue 1 and 50 of human Mitogen Activated Protein Kinase 14 (p38 MAPK) using the numbering given in entry NP\_001306.1 (GeneID 1432).

Immunoglobulin concentration was determined by extinction coefficient: absorbance at 280 nm of 1.4 equals 1.0 mg of IgG.

**APPLICATIONS**      Centrifuge tube to remove product from lid. Optimal working dilutions should be determined experimentally by the investigator. Prepare working dilution immediately before use.

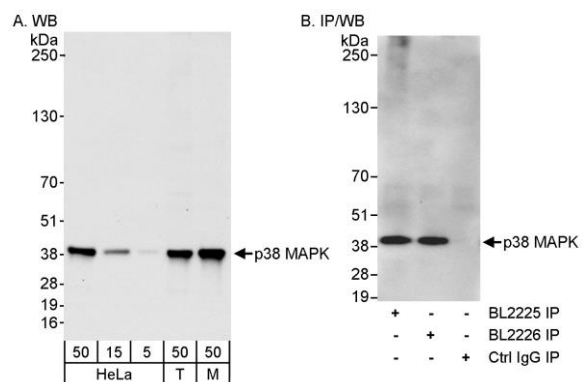
Western Blot      1:2,000 – 1:10,000  
Immunoprecipitation    2 – 5 µg/mg lysate

**APPLICATION NOTES**    Western blot of immunoprecipitates performed using Normal Pig Serum (Cat. No. S100-020), Goat anti-Rabbit Light Chain HRP Conjugate (Cat. No. A120-113P) and 4-20% SDS-PAGE (link to IP-western blot protocol in Additional Info section below).

Western blot of lysates performed using standard western blot reagents and 4-20% SDS-PAGE.

**ADDITIONAL INFO**      <https://www.bethyl.com/product/A300-707A>  
Use the link above to view SDS, a current list of citations, and other product specific information.  
IP-western blot protocol: [https://www.bethyl.com/content/protocol\\_IP\\_WB](https://www.bethyl.com/content/protocol_IP_WB)

This document certifies that this product has met all of the quality control standards defined by Bethyl Laboratories, Inc.  
Eric McIntush, PhD | Chief Scientific Officer      Date: June 21, 2019



**Detection of human and mouse p38 MAPK by western blot (h&m) and immunoprecipitation (h).** *Samples:* Whole cell lysate from HeLa (5, 15 and 50 µg for WB; 1 mg for IP, 20% of IP loaded), HEK293T (T; 50 µg), and mouse NIH 3T3 (M; 50 µg) cells. *Antibodies:* Affinity purified rabbit anti-p38 MAPK antibody BL2225 (Cat. No. A300-707A) used for WB at 0.04 µg/ml (A) and 1 µg/ml (B) and used for IP at 3 µg/mg lysate (B). p38 MAPK was also immunoprecipitated using rabbit anti-p38 MAPK antibody BL2226 (Cat. No. A300-708A) at 3 µg/mg lysate. *Detection:* Chemiluminescence with exposure times of 30 seconds (A and B).