



# SZABO SCANDIC

Part of Europa Biosite

## Produktinformation



Forschungsprodukte & Biochemikalien



Zellkultur & Verbrauchsmaterial



Diagnostik & molekulare Diagnostik



Laborgeräte & Service

Weitere Information auf den folgenden Seiten!  
See the following pages for more information!



### Lieferung & Zahlungsart

siehe unsere [Liefer- und Versandbedingungen](#)

### Zuschläge

- Mindermengenzuschlag
- Trockeneiszuschlag
- Gefahrgutzuschlag
- Expressversand

### SZABO-SCANDIC HandelsgmbH

Quellenstraße 110, A-1100 Wien

T. +43(0)1 489 3961-0

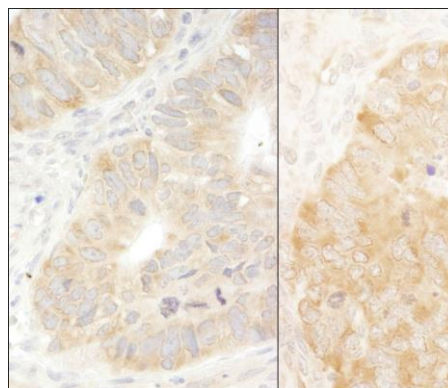
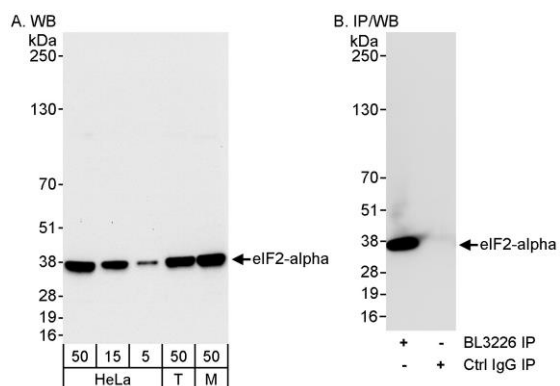
F. +43(0)1 489 3961-7

[mail@szabo-scandic.com](mailto:mail@szabo-scandic.com)

[www.szabo-scandic.com](http://www.szabo-scandic.com)

[linkedin.com/company/szaboscandic](https://www.linkedin.com/company/szaboscandic) 





**Detection of human and mouse eIF2alpha/EIF2S1 by western blot (h&m) and immunoprecipitation (h).**

**Samples:** Whole cell lysate from HeLa (5, 15 and 50  $\mu$ g for WB; 1 mg for IP, 20% of IP loaded), HEK293T (T; 50  $\mu$ g), and mouse NIH 3T3 (M; 50  $\mu$ g) cells. **Antibodies:** Affinity purified rabbit anti-eIF2alpha/EIF2S1 antibody BL3226 (Cat. No. A300-721A) used for WB at 0.04  $\mu$ g/ml (A) and 1  $\mu$ g/ml (B) and used for IP at 3  $\mu$ g/mg lysate (B). **Detection:** Chemiluminescence with exposure times of 30 seconds (A and B).

**Detection of human and mouse eIF2alpha/EIF2S1 by immunohistochemistry.** *Sample:* FFPE section of human colon carcinoma (left) and mouse teratoma (right).

**Antibody:** Affinity purified rabbit anti-eIF2alpha/EIF2S1 (Cat. No. A300-721A Lot1) used at a dilution of 1:1,000 (0.2 $\mu$ g/ml) and 1:200 (1 $\mu$ g/ml). **Detection:** DAB