



SZABO SCANDIC

Part of Europa Biosite

Produktinformation



Forschungsprodukte & Biochemikalien



Zellkultur & Verbrauchsmaterial



Diagnostik & molekulare Diagnostik



Laborgeräte & Service

Weitere Information auf den folgenden Seiten!
See the following pages for more information!



Lieferung & Zahlungsart

siehe unsere [Liefer- und Versandbedingungen](#)

Zuschläge

- Mindermengenzuschlag
- Trockeneiszuschlag
- Gefahrgutzuschlag
- Expressversand

SZABO-SCANDIC HandelsgmbH

Quellenstraße 110, A-1100 Wien

T. +43(0)1 489 3961-0

F. +43(0)1 489 3961-7

mail@szabo-scandic.com

www.szabo-scandic.com

[linkedin.com/company/szaboscandic](https://www.linkedin.com/company/szaboscandic) 

BAAT1 Antibody

Rabbit Polyclonal

Antigen Affinity Purified

Protein ID NP_689956.1

Catalog No. A300-728A

GeneID 221927

Lot No. A300-728A-1



APPLICATIONS	WB, IP, IHC
SPECIES REACTIVITY	Human
AMOUNT	100 µl
CONCENTRATION	200 µg/ml
STORAGE/SHELF LIFE	2 - 8° C / 1 year from date of receipt
PHYSICAL STATE	Liquid
BUFFER	Tris-buffered Saline containing 0.1% BSA and 0.09% Sodium Azide
ISOTYPE	IgG
ORIGIN	USA
PRODUCTION PROCEDURES	Antibody was affinity purified using an epitope specific to BAAT1 immobilized on solid support.

The epitope recognized by A300-728A maps to a region between residue 775 and the C-terminus (residue 821) of human BRCA1-associated protein required for ATM activation-1 (C7orf27) using the numbering given in entry NP_689956.1 (GeneID 221927).

Immunoglobulin concentration was determined by extinction coefficient: absorbance at 280 nm of 1.4 equals 1.0 mg of IgG.

APPLICATIONS Centrifuge tube to remove product from lid. Optimal working dilutions should be determined experimentally by the investigator. Prepare working dilution immediately before use.

Western Blot 1:2,000 - 1:10,000

Immunoprecipitation 2 - 5 µg/mg lysate

Immunohistochemistry 1:100 - 1:500. Epitope retrieval with citrate buffer pH 6.0 is recommended for FFPE tissue sections.

APPLICATION NOTES Western blot of immunoprecipitates performed using Normal Pig Serum (Cat. No. S100-020), Goat anti-Rabbit Light Chain HRP Conjugate (Cat. No. A120-113P) and 4-8% SDS-PAGE (link to IP-western blot protocol in Additional Info section below).

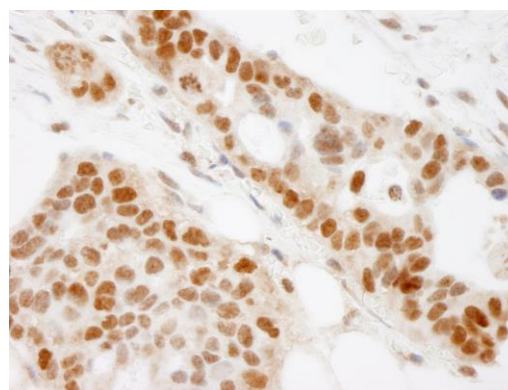
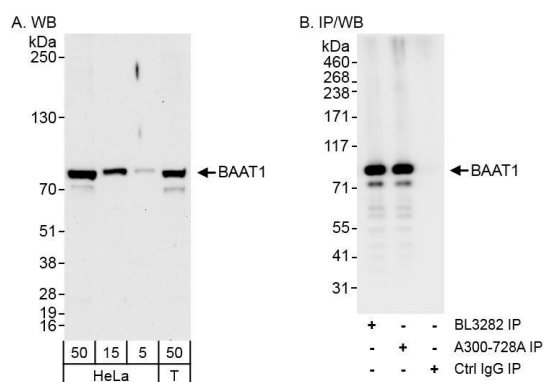
IHC HUMAN CONTROLS Western blot of lysates performed using standard western blot reagents and 4-8% SDS-PAGE. Linitis Plastica Stomach Cancer, Metastatic Lymph Node, Ovarian Carcinoma

ADDITIONAL INFO <https://www.bethyl.com/product/A300-728A>

Use the link above to view SDS, a current list of citations, and other product specific information.

IP-western blot protocol: https://www.bethyl.com/content/protocol_IP_WB

This document certifies that this product has met all of the quality control standards defined by Bethyl Laboratories, Inc.
Eric McIntush, PhD | Chief Scientific Officer Date: June 21, 2019



Detection of human BAAT1 by western blot and immunoprecipitation. *Samples:* Whole cell lysate from HeLa (5, 15 and 50 μ g for WB; 1 mg for IP, 20% of IP loaded) and HEK293T (T; 50 μ g) cells. *Antibodies:* Affinity purified rabbit anti-BAAT1 antibody A300-728A (lot A300-728A-1) used for WB at 0.04 μ g/ml (A) and 1 μ g/ml (B) and used for IP at 3 μ g/mg lysate (B). BAAT1 was also immunoprecipitated using rabbit anti-BAAT1 antibody BL3282 at 3 μ g/mg lysate. *Detection:* Chemiluminescence with exposure times of 30 seconds (A) and 10 seconds (B).

Detection of human BAAT1 by immunohistochemistry. *Sample:* FFPE section of human ovarian carcinoma. *Antibody:* Affinity purified rabbit anti-BAAT1 (Cat. No. A300-728A Lot1) used at a dilution of 1:200 (1 μ g/ml). *Detection:* DAB