



SZABO SCANDIC

Part of Europa Biosite

Produktinformation



Forschungsprodukte & Biochemikalien



Zellkultur & Verbrauchsmaterial



Diagnostik & molekulare Diagnostik



Laborgeräte & Service

Weitere Information auf den folgenden Seiten!
See the following pages for more information!



Lieferung & Zahlungsart

siehe unsere [Liefer- und Versandbedingungen](#)

Zuschläge

- Mindermengenzuschlag
- Trockeneiszuschlag
- Gefahrgutzuschlag
- Expressversand

SZABO-SCANDIC HandelsgmbH

Quellenstraße 110, A-1100 Wien

T. +43(0)1 489 3961-0

F. +43(0)1 489 3961-7

mail@szabo-scandic.com

www.szabo-scandic.com

[linkedin.com/company/szaboscandic](https://www.linkedin.com/company/szaboscandic) 

PP2A Antibody

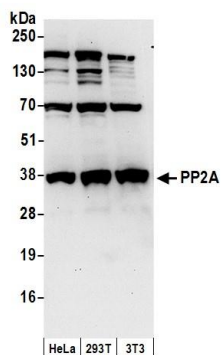
Rabbit Polyclonal

Antigen Affinity Purified Protein ID NP_004147.1
Catalog No. A300-732A-T GeneID 5516
Lot No. A300-732A-T-2



APPLICATIONS	WB, IP
SPECIES REACTIVITY	Human, Mouse
PRESUMED REACTIVITY	Based on 100% sequence identity, this antibody is predicted to react with Rat, D. melanogaster, Chicken, Bovine, Rabbit and Pig
AMOUNT	20 µl (2 blots)
CONCENTRATION	100 µg/ml
STORAGE/SHELF LIFE	2 - 8° C / 1 year from date of receipt
PHYSICAL STATE	Liquid
BUFFER	Tris-buffered Saline containing 0.1% BSA and 0.09% Sodium Azide
ISOTYPE	IgG
ORIGIN	USA
PRODUCTION PROCEDURES	Antibody was affinity purified using an epitope specific to PP2A immobilized on solid support. The epitope recognized by A300-732A-T maps to a region between residue 260 and the C-terminus (residue 309) of human Protein Phosphatase 2A (PPP2CB, Protein Phosphatase 2, Catalytic Subunit, Beta isoform) using the numbering given in entry NP_004147.1 (GeneID 5516). The region is identical to that of PPP2CA (NP_002706.1; GeneID: 5515)
APPLICATIONS	Centrifuge tube to remove product from lid. Optimal working dilutions should be determined experimentally by the investigator. Prepare working dilution immediately before use. Western Blot 1:1000 Immunoprecipitation The antibody contained within A300-732A-T has been qualified for use in immunoprecipitation; however, we recommend using the alternative formulation of this antibody found as product A300-732A.
APPLICATION NOTES	Western blot of immunoprecipitates performed using Normal Pig Serum (Cat. No. S100-020), Goat anti-Rabbit Light Chain HRP Conjugate (Cat. No. A120-113P) and 4-20% SDS-PAGE (link to IP-western blot protocol in Additional Info section below). Western blot of lysates performed using standard western blot reagents and 4-20% SDS-PAGE.
ADDITIONAL INFO	https://www.bethyl.com/product/A300-732A-T Use the link above to view SDS, a current list of citations, and other product specific information. IP-western blot protocol: https://www.bethyl.com/content/protocol_IP_WB

This document certifies that this product has met all of the quality control standards defined by Bethyl Laboratories, Inc.
Eric McIntush, PhD | Chief Scientific Officer Date: June 21, 2019

**Detection of human and mouse PP2A by western blot.**

Samples: Whole cell lysate (50 μ g) from HeLa, HEK293T, and mouse NIH 3T3 cells prepared using NETN lysis buffer.

Antibody: Affinity purified rabbit anti-PP2A antibody A300-732A-T (lot A300-732A-T-2) used for WB at 1:1000.

Detection: Chemiluminescence with an exposure time of 30 seconds.