



# SZABO SCANDIC

Part of Europa Biosite

## Produktinformation



Forschungsprodukte & Biochemikalien



Zellkultur & Verbrauchsmaterial



Diagnostik & molekulare Diagnostik



Laborgeräte & Service

Weitere Information auf den folgenden Seiten!  
See the following pages for more information!



### Lieferung & Zahlungsart

siehe unsere [Liefer- und Versandbedingungen](#)

### Zuschläge

- Mindermengenzuschlag
- Trockeneiszuschlag
- Gefahrgutzuschlag
- Expressversand

### SZABO-SCANDIC HandelsgmbH

Quellenstraße 110, A-1100 Wien

T. +43(0)1 489 3961-0

F. +43(0)1 489 3961-7

[mail@szabo-scandic.com](mailto:mail@szabo-scandic.com)

[www.szabo-scandic.com](http://www.szabo-scandic.com)

[linkedin.com/company/szaboscandic](https://www.linkedin.com/company/szaboscandic) 

# PP2A Antibody

Rabbit Polyclonal

Antigen Affinity Purified Protein ID NP\_004147.1  
Catalog No. A300-732A GeneID 5516  
Lot No. A300-732A-2



**APPLICATIONS** WB, IP  
**SPECIES REACTIVITY** Human, Mouse  
**PRESUMED REACTIVITY** Based on 100% sequence identity, this antibody is predicted to react with Rat, D. melanogaster, Chicken, Bovine, Rabbit and Pig  
**AMOUNT** 100 µl  
**CONCENTRATION** 1000 µg/ml  
**STORAGE/SHELF LIFE** 2 - 8° C / 1 year from date of receipt  
**PHYSICAL STATE** Liquid  
**BUFFER** Tris-citrate/phosphate buffer, pH 7 to 8 containing 0.09% Sodium Azide  
**ISOTYPE** IgG  
**ORIGIN** USA  
**PRODUCTION PROCEDURES** Antibody was affinity purified using an epitope specific to PP2A immobilized on solid support.

The epitope recognized by A300-732A maps to a region between residue 260 and the C-terminus (residue 309) of human Protein Phosphatase 2A (PPP2CB, Protein Phosphatase 2, Catalytic Subunit, Beta isoform) using the numbering given in entry NP\_004147.1 (GeneID 5516). The region is identical to that of PPP2CA (NP\_002706.1; GeneID: 5515)

Immunoglobulin concentration was determined by extinction coefficient: absorbance at 280 nm of 1.4 equals 1.0 mg of IgG.

**APPLICATIONS** Centrifuge tube to remove product from lid. Optimal working dilutions should be determined experimentally by the investigator. Prepare working dilution immediately before use.

Western Blot 1:2,000 - 1:10,000

Immunoprecipitation 2 - 10 µg/mg lysate

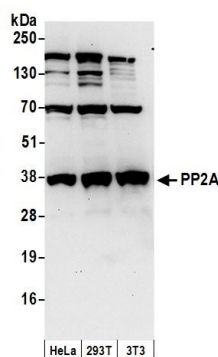
**APPLICATION NOTES** Western blot of immunoprecipitates performed using Normal Pig Serum (Cat. No. S100-020), Goat anti-Rabbit Light Chain HRP Conjugate (Cat. No. A120-113P) and 4-20% SDS-PAGE (link to IP-western blot protocol in Additional Info section below).

Western blot of lysates performed using standard western blot reagents and 4-20% SDS-PAGE.

**ADDITIONAL INFO** <https://www.bethyl.com/product/A300-732A>

Use the link above to view SDS, a current list of citations, and other product specific information.  
IP-western blot protocol: [https://www.bethyl.com/content/protocol\\_IP\\_WB](https://www.bethyl.com/content/protocol_IP_WB)

This document certifies that this product has met all of the quality control standards defined by Bethyl Laboratories, Inc.  
Eric McIntush, PhD | Chief Scientific Officer Date: June 21, 2019

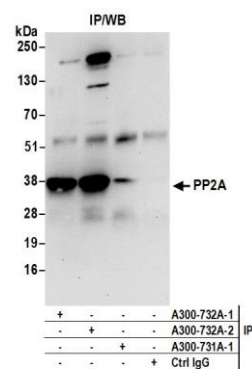


#### Detection of human and mouse PP2A by western blot.

*Samples:* Whole cell lysate (50 µg) from HeLa, HEK293T, and mouse NIH 3T3 cells prepared using NETN lysis buffer.

*Antibody:* Affinity purified rabbit anti-PP2A antibody A300-732A (lot A300-732A-2) used for WB at 0.1 µg/ml.

*Detection:* Chemiluminescence with an exposure time of 30 seconds.



#### Detection of human PP2A by western blot of immunoprecipitates.

*Samples:* Whole cell lysate (0.5 or 1.0 mg per IP reaction; 20% of IP loaded) from HEK293T cells prepared using NETN lysis buffer.

*Antibody:* Affinity purified rabbit anti-PP2A antibody A300-732A (lot A300-732A-2) used for IP at 6 µg per reaction. PP2A was also immunoprecipitated by a previous lot of this antibody (A300-732A-1) and rabbit anti-PP2A antibody A300-731A.

For blotting immunoprecipitated PP2A, A300-732A was used at 1 µg/ml. *Detection:* Chemiluminescence with an exposure time of 30 seconds.