



# SZABO SCANDIC

Part of Europa Biosite

## Produktinformation



Forschungsprodukte & Biochemikalien



Zellkultur & Verbrauchsmaterial



Diagnostik & molekulare Diagnostik



Laborgeräte & Service

Weitere Information auf den folgenden Seiten!  
See the following pages for more information!



### Lieferung & Zahlungsart

siehe unsere [Liefer- und Versandbedingungen](#)

### Zuschläge

- Mindermengenzuschlag
- Trockeneiszuschlag
- Gefahrgutzuschlag
- Expressversand

### SZABO-SCANDIC HandelsgmbH

Quellenstraße 110, A-1100 Wien

T. +43(0)1 489 3961-0

F. +43(0)1 489 3961-7

[mail@szabo-scandic.com](mailto:mail@szabo-scandic.com)

[www.szabo-scandic.com](http://www.szabo-scandic.com)

[linkedin.com/company/szaboscandic](https://www.linkedin.com/company/szaboscandic) 

# eEF1G Antibody

Rabbit Polyclonal

Antigen Affinity Purified

Protein ID NP\_001395.1

Catalog No. A300-735A-T

GeneID 1937

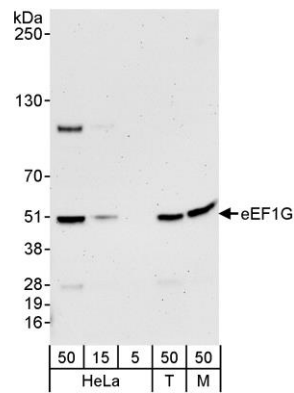
Lot No. A300-735A-T-1



<b>APPLICATIONS</b>	WB
<b>SPECIES REACTIVITY</b>	Human, Mouse
<b>PRESUMED REACTIVITY</b>	Based on 100% sequence identity, this antibody is predicted to react with Bovine, Horse and Pig
<b>AMOUNT</b>	20 µl (2 blots)
<b>CONCENTRATION</b>	40 µg/ml
<b>STORAGE/SHELF LIFE</b>	2 - 8° C / 1 year from date of receipt
<b>PHYSICAL STATE</b>	Liquid
<b>BUFFER</b>	Tris-buffered Saline containing 0.1% BSA and 0.09% Sodium Azide
<b>ISOTYPE</b>	IgG
<b>ORIGIN</b>	USA
<b>PRODUCTION PROCEDURES</b>	Antibody was affinity purified using an epitope specific to eEF1G immobilized on solid support.  The epitope recognized by A300-735A-T maps to a region between residue 400 and the C-terminus (residue 437) of human Eukaryotic Translation Elongation Factor 1 Gamma using the numbering given in entry NP_001395.1 (GeneID 1937).
<b>APPLICATIONS</b>	Centrifuge tube to remove product from lid. Optimal working dilutions should be determined experimentally by the investigator. Prepare working dilution immediately before use.  Western Blot                      1:1000  Immunoprecipitation          Not recommended
<b>APPLICATION NOTES</b>	Western blot of lysates performed using standard western blot reagents and 4-20% SDS-PAGE.
<b>ADDITIONAL INFO</b>	<a href="https://www.bethyl.com/product/A300-735A-T">https://www.bethyl.com/product/A300-735A-T</a> Use the link above to view SDS, a current list of citations, and other product specific information.

This document certifies that this product has met all of the quality control standards defined by Bethyl Laboratories, Inc.  
Eric McIntush, PhD | Chief Scientific Officer

Date: June 21, 2019

**Detection of human and mouse eEF1G by western blot.**

*Samples:* Whole cell lysate from HeLa (5, 15, and 50 µg), HEK293T (T; 50 µg), and mouse NIH 3T3 (M; 50 µg) cells.

*Antibody:* Affinity purified rabbit anti-eEF1G antibody

A300-735A-T used at 1:1000. *Detection:*

Chemiluminescence with an exposure time of 3 minutes.