



SZABO SCANDIC

Part of Europa Biosite

Produktinformation



Forschungsprodukte & Biochemikalien



Zellkultur & Verbrauchsmaterial



Diagnostik & molekulare Diagnostik



Laborgeräte & Service

Weitere Information auf den folgenden Seiten!
See the following pages for more information!



Lieferung & Zahlungsart

siehe unsere [Liefer- und Versandbedingungen](#)

Zuschläge

- Mindermengenzuschlag
- Trockeneiszuschlag
- Gefahrgutzuschlag
- Expressversand

SZABO-SCANDIC HandelsgmbH

Quellenstraße 110, A-1100 Wien

T. +43(0)1 489 3961-0

F. +43(0)1 489 3961-7

mail@szabo-scandic.com

www.szabo-scandic.com

[linkedin.com/company/szaboscandic](https://www.linkedin.com/company/szaboscandic) 

HMG2a Antibody

Rabbit Polyclonal

Antigen Affinity Purified

Protein ID NP_005333.2

Catalog No. A300-736A

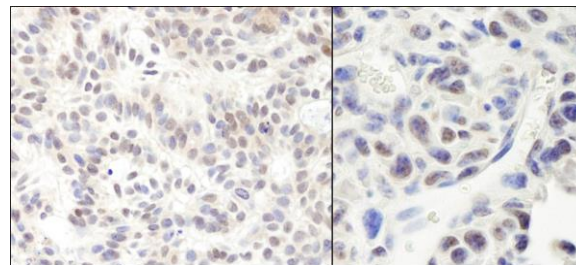
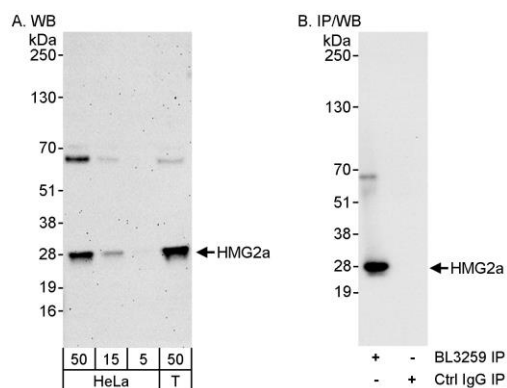
GeneID 3149

Lot No. A300-736A-1



APPLICATIONS	WB, IP, IHC						
SPECIES REACTIVITY	Human, Mouse						
AMOUNT	100 µl						
CONCENTRATION	200 µg/ml						
STORAGE/SHELF LIFE	2 – 8° C / 1 year from date of receipt						
PHYSICAL STATE	Liquid						
BUFFER	Tris-buffered Saline containing 0.1% BSA and 0.09% Sodium Azide						
ISOTYPE	IgG						
ORIGIN	USA						
PRODUCTION PROCEDURES	<p>Antibody was affinity purified using an epitope specific to HMG2a immobilized on solid support.</p> <p>The epitope recognized by A300-736A maps to a region between residue 125 and 175 of human High-Mobility Group 2A using the numbering given in entry NP_005333.2 (GeneID 3149).</p> <p>Immunoglobulin concentration was determined by extinction coefficient: absorbance at 280 nm of 1.4 equals 1.0 mg of IgG.</p>						
APPLICATIONS	<p>Centrifuge tube to remove product from lid. Optimal working dilutions should be determined experimentally by the investigator. Prepare working dilution immediately before use.</p> <table><tr><td>Western Blot</td><td>1:2,000 – 1:10,000</td></tr><tr><td>Immunoprecipitation</td><td>2 – 5 µg/mg lysate</td></tr><tr><td>Immunohistochemistry</td><td>1:100 – 1:500. Epitope retrieval with citrate buffer pH 6.0 is recommended for FFPE tissue sections.</td></tr></table>	Western Blot	1:2,000 – 1:10,000	Immunoprecipitation	2 – 5 µg/mg lysate	Immunohistochemistry	1:100 – 1:500. Epitope retrieval with citrate buffer pH 6.0 is recommended for FFPE tissue sections.
Western Blot	1:2,000 – 1:10,000						
Immunoprecipitation	2 – 5 µg/mg lysate						
Immunohistochemistry	1:100 – 1:500. Epitope retrieval with citrate buffer pH 6.0 is recommended for FFPE tissue sections.						
APPLICATION NOTES	<p>Western blot of immunoprecipitates performed using Normal Pig Serum (Cat. No. S100-020), Goat anti-Rabbit Light Chain HRP Conjugate (Cat. No. A120-113P) and 4-20% SDS-PAGE (link to IP-western blot protocol in Additional Info section below).</p> <p>Western blot of lysates performed using standard western blot reagents and 4-20% SDS-PAGE.</p>						
IHC HUMAN CONTROLS	Breast Carcinoma, Colon Carcinoma, Non-Small Cell Lung Cancer, Ovarian Carcinoma, Skin Basal Cell Carcinoma, Testicular Seminoma						
IHC MOUSE CONTROLS	Squamous Cell Carcinoma, Teratoma						
ADDITIONAL INFO	<p>https://www.bethyl.com/product/A300-736A</p> <p>Use the link above to view SDS, a current list of citations, and other product specific information. IP-western blot protocol: https://www.bethyl.com/content/protocol_IP_WB</p>						

This document certifies that this product has met all of the quality control standards defined by Bethyl Laboratories, Inc.
Eric McIntush, PhD | Chief Scientific Officer Date: June 21, 2019



Detection of human HMG2a by western blot and immunoprecipitation. *Samples:* Whole cell lysate from HeLa (5, 15 and 50 µg for WB; 1 mg for IP, 20% of IP loaded) and HEK293T (T; 50 µg) cells. *Antibodies:* Affinity purified rabbit anti-HMG2a antibody BL3259 (Cat. No. A300-736A) used for WB at 0.04 µg/ml (A) and 1 µg/ml (B) and used for IP at 3 µg/mg lysate (B). *Detection:* Chemiluminescence with exposure times of 3 minutes (A) and 30 seconds (B).

Detection of human and mouse HMG2a by immunohistochemistry. *Sample:* FFPE section of human skin basal cell carcinoma (left) and mouse squamous cell carcinoma (right). *Antibody:* Affinity purified rabbit anti-HMG2a (Cat. No. A300-736A Lot1) used at a dilution of 1:200 (1 µg/ml). *Detection:* DAB