



SZABO SCANDIC

Part of Europa Biosite

Produktinformation



Forschungsprodukte & Biochemikalien



Zellkultur & Verbrauchsmaterial



Diagnostik & molekulare Diagnostik



Laborgeräte & Service

Weitere Information auf den folgenden Seiten!
See the following pages for more information!



Lieferung & Zahlungsart

siehe unsere [Liefer- und Versandbedingungen](#)

Zuschläge

- Mindermengenzuschlag
- Trockeneiszuschlag
- Gefahrgutzuschlag
- Expressversand

SZABO-SCANDIC HandelsgmbH

Quellenstraße 110, A-1100 Wien

T. +43(0)1 489 3961-0

F. +43(0)1 489 3961-7

mail@szabo-scandic.com

www.szabo-scandic.com

[linkedin.com/company/szaboscandic](https://www.linkedin.com/company/szaboscandic)

Cul4a Antibody

Rabbit Polyclonal

Antigen Affinity Purified Protein ID NP_001008895.1

Catalog No. A300-739A GeneID 8451

Lot No. A300-739A-2

APPLICATIONS	WB, IP, IHC
SPECIES REACTIVITY	Human, Mouse
AMOUNT	100 µl
CONCENTRATION	1000 µg/ml
STORAGE/SHELF LIFE	2 – 8° C / 1 year from date of receipt
PHYSICAL STATE	Liquid
BUFFER	Tris-citrate/phosphate buffer, pH 7 to 8 containing 0.09% Sodium Azide
ISOTYPE	IgG
ORIGIN	USA
PRODUCTION PROCEDURES	Antibody was affinity purified using an epitope specific to Cul4a immobilized on solid support.

The epitope recognized by A300-739A maps to a region between residue 700 and the C-terminus (residue 759) of human Cullin 4A using the numbering given in entry NP_001008895.1 (GeneID 8451).

Immunoglobulin concentration was determined by extinction coefficient: absorbance at 280 nm of 1.4 equals 1.0 mg of IgG.

APPLICATIONS Centrifuge tube to remove product from lid. Optimal working dilutions should be determined experimentally by the investigator. Prepare working dilution immediately before use.

Western Blot 1:10,000 – 1:25,000

Immunoprecipitation 2 – 5 µg/mg lysate

Immunohistochemistry 1:1,000 to 1:5,000. Epitope retrieval with citrate buffer pH6.0 is recommended for FFPE tissue sections.

IHC HUMAN CONTROLS Bone Marrow-Metastatic Carcinoma, Breast Carcinoma, Linitis Plastica Stomach Cancer, Metastatic Lymph Node, Ovarian Carcinoma, Pancreatic Islet Cell Tumor

IHC MOUSE CONTROLS Renal Cell Carcinoma, Squamous Cell Carcinoma

ADDITIONAL INFO <https://www.bethyl.com/product/A300-739A>

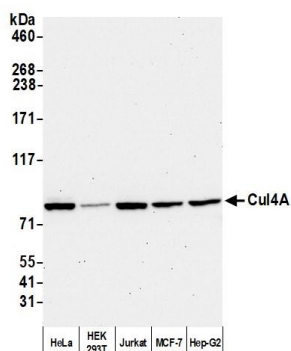
Use the link above to view SDS, a current list of citations, and other product specific information.

IP-western blot protocol: https://www.bethyl.com/content/protocol_IP_WB

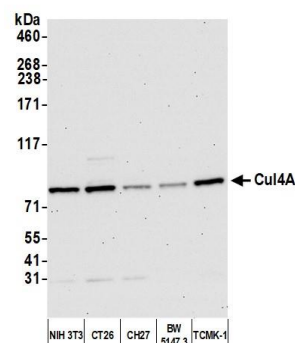
This document certifies that this product has met all of the quality control standards defined by Bethyl Laboratories, Inc.

Michael Spencer, PhD

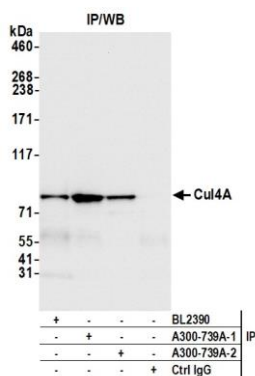
Date: September 1, 2021



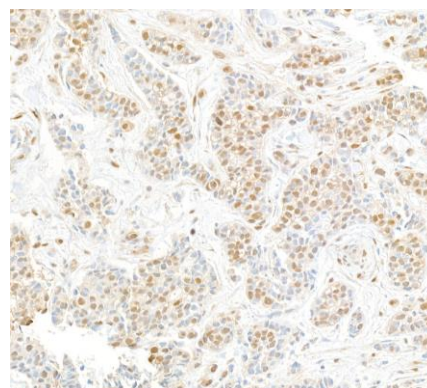
Detection of human Cul4A by western blot. Samples: Whole cell lysate (10 μ g) from HeLa, HEK293T, Jurkat, MCF-7, and Hep-G2 cells prepared using NETN lysis buffer. **Antibody:** Affinity purified rabbit anti-Cul4A antibody (A300-739A lot 2) used for WB at 0.04 μ g/ml. **Detection:** Chemiluminescence with an exposure time of 30 seconds.



Detection of mouse Cul4A by western blot. Samples: Whole cell lysate (5 μ g) from NIH 3T3, CT26, CH27, BW5147.3, and TCMK-1 cells prepared using NETN lysis buffer. **Antibody:** Affinity purified rabbit anti-Cul4A antibody (A300-739A lot 2) used for WB at 0.04 μ g/ml. **Detection:** Chemiluminescence with an exposure time of 30 seconds.



Detection of human Cul4A by western blot of immunoprecipitates. Samples: Whole cell lysate (1.0 mg per IP reaction; 10% of IP loaded) from HeLa cells prepared using NETN lysis buffer. **Antibodies:** Affinity purified rabbit anti-Cul4A antibody (A300-739A lot 2) used for IP at 2 μ g per reaction. Cul4A was also immunoprecipitated by a previous lot of this antibody (A300-739A lot 1) and a second antibody against a different epitope of Cul4A (BL2390). For blotting immunoprecipitated Cul4A, A300-739A was used at 0.04 μ g/ml. **Detection:** Chemiluminescence with an exposure time of 3 seconds.



Detection of human Cul4a by immunohistochemistry. Samples: FFPE section of human breast carcinoma. **Antibody:** Affinity purified rabbit anti-Cul4a (A300-739A Lot 2) used at a dilution of 1:5,000 (0.2 μ g/ml). **Detection:** DAB