



SZABO SCANDIC

Part of Europa Biosite

Produktinformation



Forschungsprodukte & Biochemikalien



Zellkultur & Verbrauchsmaterial



Diagnostik & molekulare Diagnostik



Laborgeräte & Service

Weitere Information auf den folgenden Seiten!
See the following pages for more information!



Lieferung & Zahlungsart

siehe unsere [Liefer- und Versandbedingungen](#)

Zuschläge

- Mindermengenzuschlag
- Trockeneiszuschlag
- Gefahrgutzuschlag
- Expressversand

SZABO-SCANDIC HandelsgmbH

Quellenstraße 110, A-1100 Wien

T. +43(0)1 489 3961-0

F. +43(0)1 489 3961-7

mail@szabo-scandic.com

www.szabo-scandic.com

[linkedin.com/company/szaboscandic](https://www.linkedin.com/company/szaboscandic) 

RPL7 Antibody

Rabbit Polyclonal

Antigen Affinity Purified Protein ID NP_000962.2
 Catalog No. A300-741A-T GeneID 6129
 Lot No. A300-741A-T-3



APPLICATIONS WB, IP, IHC
SPECIES REACTIVITY Human, Mouse
PRESUMED REACTIVITY Based on 100% sequence identity, this antibody is predicted to react with Rat, Chicken, Bovine and Orangutan
AMOUNT 20 μ l (2 blots)
CONCENTRATION 40 μ g/ml
STORAGE/SHELF LIFE 2 - 8° C / 1 year from date of receipt
PHYSICAL STATE Liquid
BUFFER Tris-buffered Saline containing 0.1% BSA and 0.09% Sodium Azide
ISOTYPE IgG
ORIGIN USA
PRODUCTION PROCEDURES Antibody was affinity purified using an epitope specific to RPL7 immobilized on solid support.

The epitope recognized by A300-741A-T maps to a region between residue 200 and the C-terminus (residue 248) of human Ribosomal Protein L7 using the numbering given in entry NP_000962.2 (GeneID 6129).

APPLICATIONS Centrifuge tube to remove product from lid. Optimal working dilutions should be determined experimentally by the investigator. Prepare working dilution immediately before use.

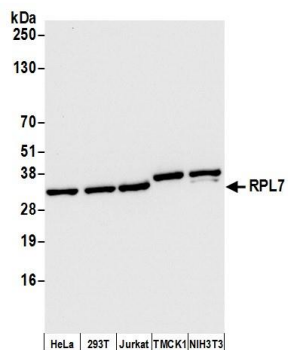
Western Blot 1:1000
 Immunoprecipitation The antibody contained within A300-741A-T has been qualified for use in immunoprecipitation; however, we recommend using the alternative formulation of this antibody found as product A300-741A.
 Immunohistochemistry 1:40 - 1:200. Epitope retrieval with Tris-EDTA pH 9.0 is recommended for FFPE tissue sections.

APPLICATION NOTES Western blot of immunoprecipitates performed using Normal Pig Serum (Cat. No. S100-020), Goat anti-Rabbit Light Chain HRP Conjugate (Cat. No. A120-113P) and 4-20% SDS-PAGE (link to IP-western blot protocol in Additional Info section below).

Western blot of lysates performed using standard western blot reagents and 4-20% SDS-PAGE.

ADDITIONAL INFO <https://www.bethyl.com/product/A300-741A-T>
 Use the link above to view SDS, a current list of citations, and other product specific information.
 IP-western blot protocol: https://www.bethyl.com/content/protocol_IP_WB

This document certifies that this product has met all of the quality control standards defined by Bethyl Laboratories, Inc.
 Eric McIntush, PhD | Chief Scientific Officer Date: June 21, 2019

**Detection of human and mouse RPL7 by western blot.**

Samples: Whole cell lysate (50 µg) from HeLa, HEK293T, Jurkat, mouse TMCK-1, and mouse NIH 3T3 cells prepared using RIPA lysis buffer. *Antibody:* Affinity purified rabbit anti-RPL7 antibody A300-741A-T (lot A300-741A-T-3) used for WB at 1:1000. *Detection:* Chemiluminescence with an exposure time of 3 seconds.