



SZABO SCANDIC

Part of Europa Biosite

Produktinformation



Forschungsprodukte & Biochemikalien



Zellkultur & Verbrauchsmaterial



Diagnostik & molekulare Diagnostik



Laborgeräte & Service

Weitere Information auf den folgenden Seiten!
See the following pages for more information!



Lieferung & Zahlungsart

siehe unsere [Liefer- und Versandbedingungen](#)

Zuschläge

- Mindermengenzuschlag
- Trockeneiszuschlag
- Gefahrgutzuschlag
- Expressversand

SZABO-SCANDIC HandelsgmbH

Quellenstraße 110, A-1100 Wien

T. +43(0)1 489 3961-0

F. +43(0)1 489 3961-7

mail@szabo-scandic.com

www.szabo-scandic.com

[linkedin.com/company/szaboscandic](https://www.linkedin.com/company/szaboscandic) 

RPL7 Antibody

Rabbit Polyclonal

Antigen Affinity Purified

Protein ID NP_000962.2

Catalog No. A300-741A

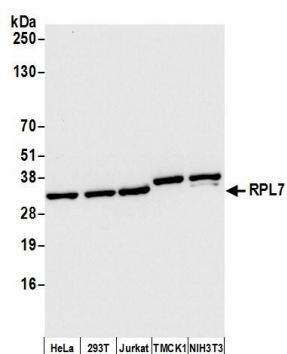
GeneID 6129

Lot No. A300-741A-3



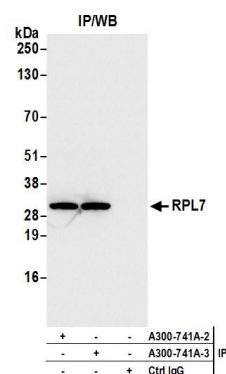
APPLICATIONS	WB, IP, IHC
SPECIES REACTIVITY	Human, Mouse
PRESUMED REACTIVITY	Based on 100% sequence identity, this antibody is predicted to react with Rat, Chicken, Bovine and Orangutan
AMOUNT	100 µl
CONCENTRATION	200 µg/ml
STORAGE/SHELF LIFE	2 – 8° C / 1 year from date of receipt
PHYSICAL STATE	Liquid
BUFFER	Tris-buffered Saline containing 0.1% BSA and 0.09% Sodium Azide
ISOTYPE	IgG
ORIGIN	USA
PRODUCTION PROCEDURES	<p>Antibody was affinity purified using an epitope specific to RPL7 immobilized on solid support.</p> <p>The epitope recognized by A300-741A maps to a region between residue 200 and the C-terminus (residue 248) of human Ribosomal Protein L7 using the numbering given in entry NP_000962.2 (GeneID 6129).</p> <p>Immunoglobulin concentration was determined by extinction coefficient: absorbance at 280 nm of 1.4 equals 1.0 mg of IgG.</p>
APPLICATIONS	<p>Centrifuge tube to remove product from lid. Optimal working dilutions should be determined experimentally by the investigator. Prepare working dilution immediately before use.</p> <p>Western Blot 1:2,000 – 1:10,000</p> <p>Immunoprecipitation 2 – 10 µg/mg lysate</p> <p>Immunohistochemistry 1:100 – 1:500. Epitope retrieval with citrate buffer pH 6.0 is recommended for FFPE tissue sections.</p>
APPLICATION NOTES	<p>Western blot of immunoprecipitates performed using Normal Pig Serum (Cat. No. S100-020), Goat anti-Rabbit Light Chain HRP Conjugate (Cat. No. A120-113P) and 4-20% SDS-PAGE (link to IP-western blot protocol in Additional Info section below).</p> <p>Western blot of lysates performed using standard western blot reagents and 4-20% SDS-PAGE.</p>
IHC HUMAN CONTROLS	Breast Carcinoma, Non-Small Cell Lung Cancer, Ovarian Carcinoma, Prostate Carcinoma
IHC MOUSE CONTROLS	Colon Carcinoma CT26, Renal Cell Carcinoma, Teratoma
ADDITIONAL INFO	<p>https://www.bethyl.com/product/A300-741A</p> <p>Use the link above to view SDS, a current list of citations, and other product specific information.</p> <p>IP-western blot protocol: https://www.bethyl.com/content/protocol_IP_WB</p>

This document certifies that this product has met all of the quality control standards defined by Bethyl Laboratories, Inc.
Eric McIntush, PhD | Chief Scientific Officer Date: June 21, 2019



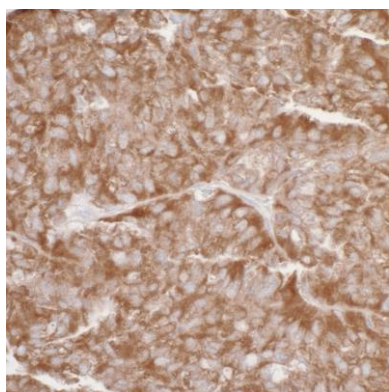
Detection of human and mouse RPL7 by western blot.

Samples: Whole cell lysate (50 µg) from HeLa, HEK293T, Jurkat, mouse TMCK-1, and mouse NIH 3T3 cells prepared using RIPA lysis buffer. **Antibody:** Affinity purified rabbit anti-RPL7 antibody A300-741A (lot A300-741A-3) used for WB at 0.04 µg/ml. **Detection:** Chemiluminescence with an exposure time of 3 seconds.



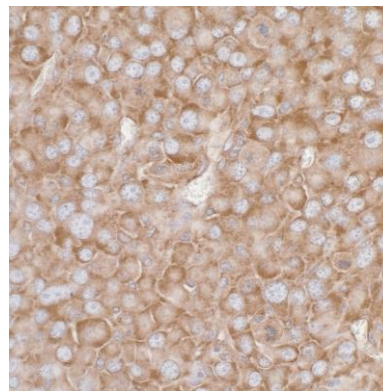
Detection of human RPL7 by western blot of immunoprecipitates.

Samples: Whole cell lysate (1.0 mg per IP reaction; 20% of IP loaded) from HEK293T cells prepared using RIPA lysis buffer. **Antibodies:** Affinity purified rabbit anti-RPL7 antibody A300-741A (lot A300-741A-3) used for IP at 6 µg per reaction. RPL7 was also immunoprecipitated by a previous lot of this antibody (lot A300-741A-2). For blotting immunoprecipitated RPL7, A300-741A was used at 1 µg/ml. **Detection:** Chemiluminescence with an exposure time of 1 second.



Detection of human RPL7 by immunohistochemistry.

Sample: FFPE section of human ovarian carcinoma. **Antibody:** Affinity purified rabbit anti-RPL7 (Cat. No. A300-741A lot 3) used at a dilution of 1:1,000 (0.2µg/ml). **Detection:** DAB



Detection of mouse RPL7 by immunohistochemistry.

Sample: FFPE section of mouse renal cell carcinoma. **Antibody:** Affinity purified rabbit anti-RPL7 (Cat. No. A300-741A Lot3) used at a dilution of 1:1,000 (0.2µg/ml). **Detection:** DAB