



# SZABO SCANDIC

Part of Europa Biosite

## Produktinformation



Forschungsprodukte & Biochemikalien



Zellkultur & Verbrauchsmaterial



Diagnostik & molekulare Diagnostik



Laborgeräte & Service

Weitere Information auf den folgenden Seiten!  
See the following pages for more information!



### Lieferung & Zahlungsart

siehe unsere [Liefer- und Versandbedingungen](#)

### Zuschläge

- Mindermengenzuschlag
- Trockeneiszuschlag
- Gefahrgutzuschlag
- Expressversand

### SZABO-SCANDIC HandelsgmbH

Quellenstraße 110, A-1100 Wien

T. +43(0)1 489 3961-0

F. +43(0)1 489 3961-7

[mail@szabo-scandic.com](mailto:mail@szabo-scandic.com)

[www.szabo-scandic.com](http://www.szabo-scandic.com)

[linkedin.com/company/szaboscandic](https://www.linkedin.com/company/szaboscandic) 

# DJ-1 Antibody

Rabbit Polyclonal

Antigen Affinity Purified

Protein ID NP\_009193.2

Catalog No. A300-744A

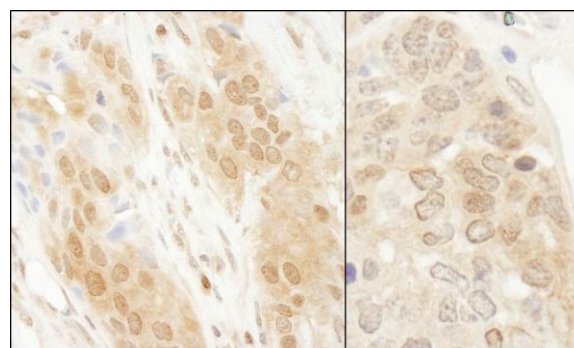
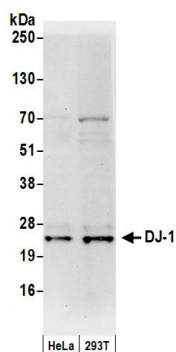
GeneID 11315

Lot No. A300-744A-1



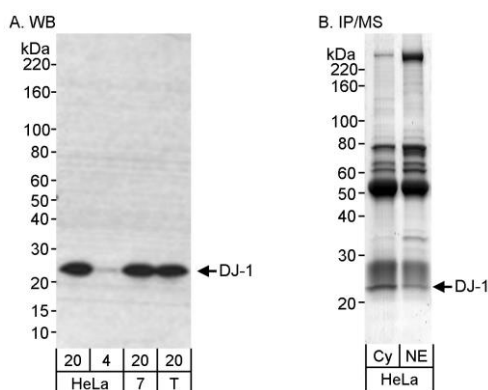
<b>APPLICATIONS</b>	WB, IP, IHC
<b>SPECIES REACTIVITY</b>	Human, Mouse
<b>AMOUNT</b>	100 µl
<b>CONCENTRATION</b>	200 µg/ml
<b>STORAGE/SHELF LIFE</b>	2 - 8° C / 1 year from date of receipt
<b>PHYSICAL STATE</b>	Liquid
<b>BUFFER</b>	Tris-buffered Saline containing 0.1% BSA and 0.09% Sodium Azide
<b>ISOTYPE</b>	IgG
<b>ORIGIN</b>	USA
<b>PRODUCTION PROCEDURES</b>	<p>Antibody was affinity purified using an epitope specific to DJ-1 immobilized on solid support.</p> <p>The epitope recognized by A300-744A maps to a region between residue 140 and the C-terminus (residue 189) of human DJ-1 (PARK7, Parkinson Disease 7) using the numbering given in entry NP_009193.2 (GeneID 11315).</p> <p>Immunoglobulin concentration was determined by extinction coefficient: absorbance at 280 nm of 1.4 equals 1.0 mg of IgG.</p>
<b>APPLICATIONS</b>	<p>Centrifuge tube to remove product from lid. Optimal working dilutions should be determined experimentally by the investigator. Prepare working dilution immediately before use.</p> <p>Western Blot 1:2,000 - 1:10,000</p> <p>Immunoprecipitation 2 - 5 µg/mg lysate</p> <p>Immunohistochemistry 1:500 - 1:2,000. Epitope retrieval with Tris-EDTA pH 9.0 is recommended for FFPE tissue sections.</p>
<b>APPLICATION NOTES</b>	<p>Western blot of immunoprecipitates performed using Normal Pig Serum (Cat. No. S100-020), Goat anti-Rabbit Light Chain HRP Conjugate (Cat. No. A120-113P) and 4-12% SDS-PAGE (link to IP-western blot protocol in Additional Info section below).</p> <p>Western blot of lysates performed using standard western blot reagents and 4-12% SDS-PAGE.</p>
<b>IHC HUMAN CONTROLS</b>	Breast Carcinoma, Prostate Carcinoma
<b>IHC MOUSE CONTROLS</b>	Teratoma
<b>ADDITIONAL INFO</b>	<p><a href="https://www.bethyl.com/product/A300-744A">https://www.bethyl.com/product/A300-744A</a></p> <p>Use the link above to view SDS, a current list of citations, and other product specific information.</p> <p>IP-western blot protocol: <a href="https://www.bethyl.com/content/protocol_IP_WB">https://www.bethyl.com/content/protocol_IP_WB</a></p>

This document certifies that this product has met all of the quality control standards defined by Bethyl Laboratories, Inc.  
Eric McIntush, PhD | Chief Scientific Officer Date: June 21, 2019



**Detection of human DJ-1 by western blot.** *Samples:* Whole cell lysate (50  $\mu$ g) from HeLa and HEK293T cells prepared using NETN lysis buffer. *Antibody:* Affinity purified rabbit anti-DJ-1 antibody A300-744A (lot A300-744A-1) used for WB at 0.1  $\mu$ g/ml. *Detection:* Chemiluminescence with an exposure time of 30 seconds.

**Detection of human and mouse DJ-1 by immunohistochemistry.** *Sample:* FFPE section of human breast carcinoma (left) and mouse teratoma (right). *Antibody:* Affinity purified rabbit anti-DJ-1 (Cat. No. A300-744A Lot1) used at a dilution of 1:1,000 (0.2  $\mu$ g/ml). *Detection:* DAB



**Detection of human DJ-1 by western blot and immunoprecipitation/Mass Spectrometry.** *Samples:* A) Whole cell lysate from HeLa (20 and 4  $\mu$ g for WB), MCF-7 (7; 20  $\mu$ g) and HEK293T (T; 20  $\mu$ g) cells. B) Cytosolic and nuclear extract (10 mg/IP) from HeLa S3 cells. *Antibodies:* Affinity purified rabbit anti-DJ-1 antibody (Cat.No. A300-744A) used for WB at 0.1  $\mu$ g/ml (A) and for IP at 0.7  $\mu$ g/mg lysate (B). *Detection:* Chemiluminescence with an exposure time of 5 sec (A) and vMALDI-LTQ and LC-MS/MS of Coomassie stained bands (B).