



# SZABO SCANDIC

Part of Europa Biosite

## Produktinformation



Forschungsprodukte & Biochemikalien



Zellkultur & Verbrauchsmaterial



Diagnostik & molekulare Diagnostik



Laborgeräte & Service

Weitere Information auf den folgenden Seiten!  
See the following pages for more information!



### Lieferung & Zahlungsart

siehe unsere [Liefer- und Versandbedingungen](#)

### Zuschläge

- Mindermengenzuschlag
- Trockeneiszuschlag
- Gefahrgutzuschlag
- Expressversand

### SZABO-SCANDIC HandelsgmbH

Quellenstraße 110, A-1100 Wien

T. +43(0)1 489 3961-0

F. +43(0)1 489 3961-7

[mail@szabo-scandic.com](mailto:mail@szabo-scandic.com)

[www.szabo-scandic.com](http://www.szabo-scandic.com)

[linkedin.com/company/szaboscandic](https://www.linkedin.com/company/szaboscandic) 

# RCD8 Antibody

Rabbit Polyclonal

Antigen Affinity Purified

Protein ID AAH4361.6

Catalog No. A300-745A-T

GeneID 23644

Lot No. A300-745A-T-3



|                              |  |
|------------------------------|--|
| <b>APPLICATIONS</b>          | WB, IP   |
| <b>SPECIES REACTIVITY</b>    | Human, Mouse   |
| <b>AMOUNT</b>                | 20 µl (2 blots)  |
| <b>CONCENTRATION</b>         | 100 µg/ml  |
| <b>STORAGE/SHELF LIFE</b>    | 2 - 8° C / 1 year from date of receipt   |
| <b>PHYSICAL STATE</b>        | Liquid   |
| <b>BUFFER</b>                | Tris-buffered Saline containing 0.1% BSA and 0.09% Sodium Azide                                |
| <b>ISOTYPE</b>               | IgG  |
| <b>ORIGIN</b>                | USA  |
| <b>PRODUCTION PROCEDURES</b> | Antibody was affinity purified using an epitope specific to RCD8 immobilized on solid support. |

The epitope recognized by A300-745A-T maps to a region between residue 1 and 50 of human RCD8 Autoantigen using the numbering given in entry AAH43616 (GeneID 23644).

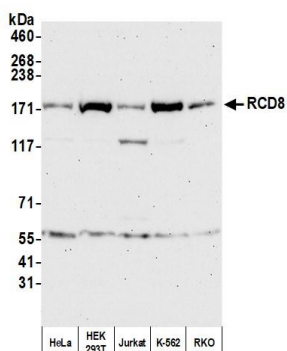
**APPLICATIONS** Centrifuge tube to remove product from lid. Optimal working dilutions should be determined experimentally by the investigator. Prepare working dilution immediately before use.

Western Blot 1:1000

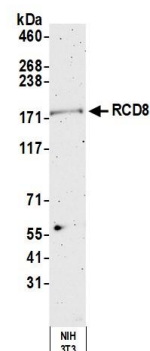
Immunoprecipitation The antibody contained within A300-745A-T has been qualified for use in immunoprecipitation; however, we recommend using the alternative formulation of this antibody found as product A300-745A.

**ADDITIONAL INFO** <https://www.bethyl.com/product/A300-745A-T>  
Use the link above to view SDS, a current list of citations, and other product specific information.  
IP-western blot protocol: [https://www.bethyl.com/content/protocol\\_IP\\_WB](https://www.bethyl.com/content/protocol_IP_WB)

This document certifies that this product has met all of the quality control standards defined by Bethyl Laboratories, Inc.  
Eric McIntush, PhD | Chief Scientific Officer Date: October 15, 2020



**Detection of human RCD8 by western blot.** *Samples:* Whole cell lysate (50  $\mu$ g) from HeLa, HEK293T, Jurkat, K-562, and RKO cells prepared using NETN lysis buffer. *Antibody:* Affinity purified rabbit anti-RCD8 antibody A300-745A-T (lot A300-745A-T-3) used for WB at 1:1,000. *Detection:* Chemiluminescence with an exposure time of 75 seconds.



**Detection of mouse RCD8 by western blot.** *Samples:* Whole cell lysate (50  $\mu$ g) from NIH 3T3 cells prepared using NETN lysis buffer. *Antibody:* Affinity purified rabbit anti-RCD8 antibody A300-745A-T (lot A300-745A-T-3) used for WB at 1:1,000. *Detection:* Chemiluminescence with an exposure time of 3 minutes.