



SZABO SCANDIC

Part of Europa Biosite

Produktinformation



Forschungsprodukte & Biochemikalien



Zellkultur & Verbrauchsmaterial



Diagnostik & molekulare Diagnostik



Laborgeräte & Service

Weitere Information auf den folgenden Seiten!
See the following pages for more information!



Lieferung & Zahlungsart

siehe unsere [Liefer- und Versandbedingungen](#)

Zuschläge

- Mindermengenzuschlag
- Trockeneiszuschlag
- Gefahrgutzuschlag
- Expressversand

SZABO-SCANDIC HandelsgmbH

Quellenstraße 110, A-1100 Wien

T. +43(0)1 489 3961-0

F. +43(0)1 489 3961-7

mail@szabo-scandic.com

www.szabo-scandic.com

[linkedin.com/company/szaboscandic](https://www.linkedin.com/company/szaboscandic) 

RCD8 Antibody

Rabbit Polyclonal

Antigen Affinity Purified

Protein ID AAH4361.6

Catalog No. A300-745A

GeneID 23644

Lot No. A300-745A-3



APPLICATIONS WB, IP

SPECIES REACTIVITY Human, Mouse

AMOUNT 100 µl

CONCENTRATION 200 µg/ml

STORAGE/SHELF LIFE 2 – 8° C / 1 year from date of receipt

PHYSICAL STATE Liquid

BUFFER Tris-buffered Saline containing 0.1% BSA and 0.09% Sodium Azide

ISOTYPE IgG

ORIGIN USA

PRODUCTION PROCEDURES Antibody was affinity purified using an epitope specific to RCD8 immobilized on solid support.

The epitope recognized by A300-745A maps to a region between residue 1 and 50 of human RCD8 Autoantigen using the numbering given in entry AAH43616 (GeneID 23644).

Immunoglobulin concentration was determined by extinction coefficient: absorbance at 280 nm of 1.4 equals 1.0 mg of IgG.

APPLICATIONS Centrifuge tube to remove product from lid. Optimal working dilutions should be determined experimentally by the investigator. Prepare working dilution immediately before use.

Western Blot 1:2,000 – 1:10,000

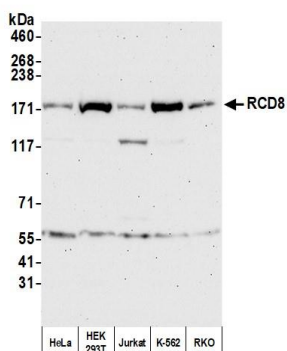
Immunoprecipitation 2 – 10 µg/mg lysate

ADDITIONAL INFO <https://www.bethyl.com/product/A300-745A>

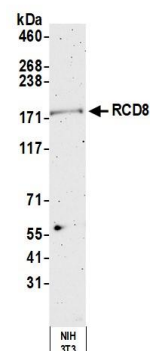
Use the link above to view SDS, a current list of citations, and other product specific information.

IP-western blot protocol: https://www.bethyl.com/content/protocol_IP_WB

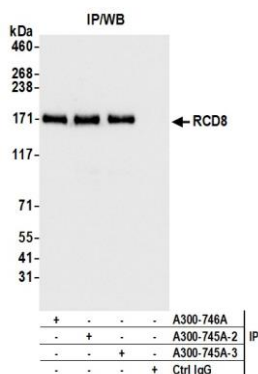
This document certifies that this product has met all of the quality control standards defined by Bethyl Laboratories, Inc.
Eric McIntush, PhD | Chief Scientific Officer Date: October 15, 2020



Detection of human RCD8 by western blot. *Samples:* Whole cell lysate (50 μ g) from HeLa, HEK293T, Jurkat, K-562, and RKO cells prepared using NETN lysis buffer. *Antibody:* Affinity purified rabbit anti-RCD8 antibody A300-745A (lot A300-745A-3) used for WB at 0.04 μ g/ml. *Detection:* Chemiluminescence with an exposure time of 75 seconds.



Detection of mouse RCD8 by western blot. *Samples:* Whole cell lysate (50 μ g) from NIH 3T3 cells prepared using NETN lysis buffer. *Antibody:* Affinity purified rabbit anti-RCD8 antibody A300-745A (lot A300-745A-3) used for WB at 0.04 μ g/ml. *Detection:* Chemiluminescence with an exposure time of 3 minutes.



Detection of human RCD8 by western blot of immunoprecipitates. *Samples:* Whole cell lysate (1.0 mg per IP reaction; 20% of IP loaded) from HEK293T cells prepared using NETN lysis buffer. *Antibodies:* Affinity purified rabbit anti-RCD8 antibody A300-745A (lot A300-745A-3) used for IP at 6 μ g per reaction. RCD8 was also immunoprecipitated by a previous lot of this antibody (lot A300-745A-2) and rabbit anti-RCD8 antibody A300-746A. For blotting immunoprecipitated RCD8, A300-745A-3 was used at 0.04 μ g/ml. *Detection:* Chemiluminescence with an exposure time of 1 second.