



# SZABO SCANDIC

Part of Europa Biosite

## Produktinformation



Forschungsprodukte & Biochemikalien



Zellkultur & Verbrauchsmaterial



Diagnostik & molekulare Diagnostik



Laborgeräte & Service

Weitere Information auf den folgenden Seiten!  
See the following pages for more information!



### Lieferung & Zahlungsart

siehe unsere [Liefer- und Versandbedingungen](#)

### Zuschläge

- Mindermengenzuschlag
- Trockeneiszuschlag
- Gefahrgutzuschlag
- Expressversand

### SZABO-SCANDIC HandelsgmbH

Quellenstraße 110, A-1100 Wien

T. +43(0)1 489 3961-0

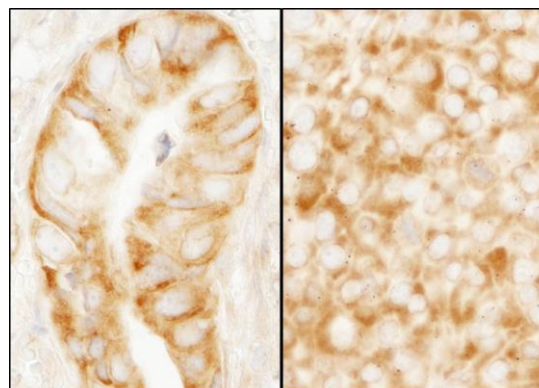
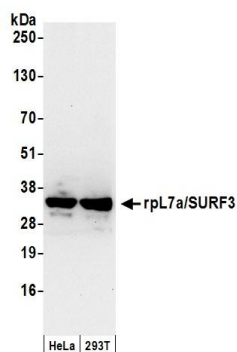
F. +43(0)1 489 3961-7

[mail@szabo-scandic.com](mailto:mail@szabo-scandic.com)

[www.szabo-scandic.com](http://www.szabo-scandic.com)

[linkedin.com/company/szaboscandic](https://www.linkedin.com/company/szaboscandic) 



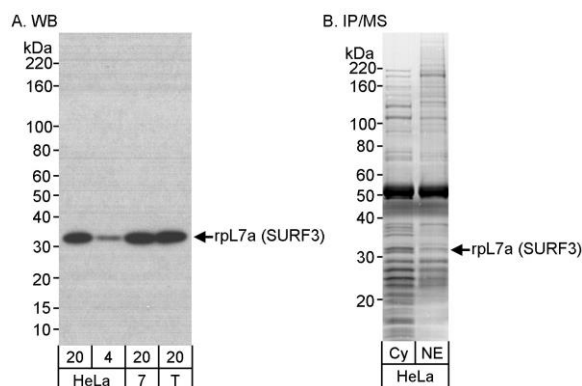


#### Detection of human rpL7a/SURF3 by western blot.

**Samples:** Whole cell lysate (50  $\mu$ g) from HeLa and HEK293T cells prepared using NETN lysis buffer. **Antibody:** Affinity purified rabbit anti-rpL7a/SURF3 antibody A300-749A (lot A300-749A-1) used for WB at 0.1  $\mu$ g/ml. **Detection:** Chemiluminescence with an exposure time of 10 seconds.

#### Detection of human and mouse rpL7a (SURF3) by immunohistochemistry.

**Sample:** FFPE sections of human colon carcinoma (left) and mouse renal cell carcinoma (right). **Antibody:** Affinity purified rabbit anti-rpL7a (SURF3) (Cat. No. A300-749A Lot1) used at a dilution of 1:200 (1  $\mu$ g/ml). **Detection:** DAB



#### Detection of human rpL7a (SURF3) by western blot and immunoprecipitation/Mass Spectrometry.

**Samples:** A) Whole cell lysate from HeLa (20 and 4  $\mu$ g), MCF-7 (7; 20 $\mu$ g) and HEK293T (T; 20 $\mu$ g) cells. B) Cytosolic and nuclear extract (10 mg/IP) from HeLa S3 cells. **Antibodies:** Affinity purified rabbit anti-rpL7a (SURF3) antibody (Cat. No. A300-749A) used for WB at 0.1  $\mu$ g/ml (A) and for IP at 0.7  $\mu$ g/mg lysate (B). **Detection:** Chemiluminescence with an exposure time of 5 sec (A) and vMALDI-LTQ and LC-MS/MS of Coomassie stained bands (B).