



SZABO SCANDIC

Part of Europa Biosite

Produktinformation



Forschungsprodukte & Biochemikalien



Zellkultur & Verbrauchsmaterial



Diagnostik & molekulare Diagnostik



Laborgeräte & Service

Weitere Information auf den folgenden Seiten!
See the following pages for more information!



Lieferung & Zahlungsart

siehe unsere [Liefer- und Versandbedingungen](#)

Zuschläge

- Mindermengenzuschlag
- Trockeneiszuschlag
- Gefahrgutzuschlag
- Expressversand

SZABO-SCANDIC HandelsgmbH

Quellenstraße 110, A-1100 Wien

T. +43(0)1 489 3961-0

F. +43(0)1 489 3961-7

mail@szabo-scandic.com

www.szabo-scandic.com

[linkedin.com/company/szaboscandic](https://www.linkedin.com/company/szaboscandic) 

Phospho MCM2 (S53) Antibody

Rabbit Polyclonal

Antigen Affinity Purified Protein ID NP_004517.2

Catalog No. A300-756A GeneID 4171

Lot No. A300-756A-4



APPLICATIONS	WB, IHC
SPECIES REACTIVITY	Human, Mouse
AMOUNT	100 µl
CONCENTRATION	200 µg/ml
STORAGE/SHELF LIFE	2 - 8° C / 1 year from date of receipt
PHYSICAL STATE	Liquid
BUFFER	Tris-buffered Saline containing 0.1% BSA and 0.09% Sodium Azide
ISOTYPE	IgG
ORIGIN	USA
PRODUCTION PROCEDURES	Antibody was affinity purified using an epitope specific to Phospho MCM2-S53 immobilized on solid support.

Immunogen was a synthetic phosphorylated peptide, which represented a portion of human minichromosomal maintenance deficient 2 surrounding Serine 53 according to the numbering given in entry NP_004517.2 (GeneID 4171).

Immunoglobulin concentration was determined by extinction coefficient: absorbance at 280 nm of 1.4 equals 1.0 mg of IgG.

APPLICATIONS Centrifuge tube to remove product from lid. Optimal working dilutions should be determined experimentally by the investigator. Prepare working dilution immediately before use.

Western Blot 1:1,000 – 1:2,500

Immunohistochemistry 1:100 – 1:500. Epitope retrieval with citrate buffer pH 6.0 is recommended for FFPE tissue sections.

APPLICATION NOTES Western blot of lysates performed using standard western blot reagents and 4-8% SDS-PAGE.

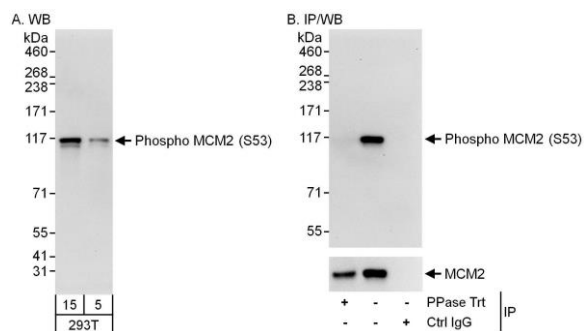
IHC HUMAN CONTROLS Breast Carcinoma, Colon Carcinoma, Non-Small Cell Lung Cancer, Ovarian Carcinoma, Prostate Carcinoma, Stomach Adenocarcinoma, Testicular Seminoma

IHC MOUSE CONTROLS Renal Cell Carcinoma

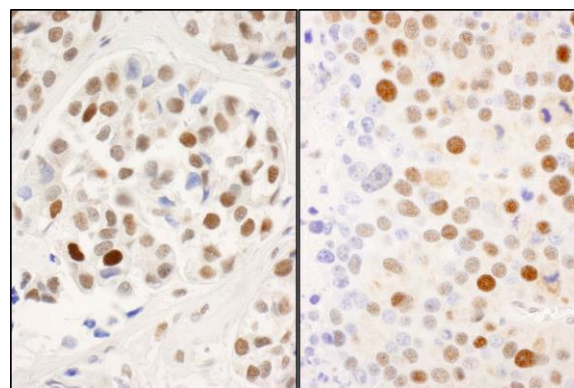
ADDITIONAL INFO <https://www.bethyl.com/product/A300-756A>

Use the link above to view SDS, a current list of citations, and other product specific information.

This document certifies that this product has met all of the quality control standards defined by Bethyl Laboratories, Inc.
Eric McIntush, PhD | Chief Scientific Officer Date: June 21, 2019



Detection of human Phospho MCM2 (S53) by western blot. *Samples:* Whole cell lysate (5 and 15 µg for WB; 1 mg for IP, 20% of IP loaded) from asynchronous HEK293T cells. For IP/WB, MCM2 was immunoprecipitated using A300-191A, which recognizes total MCM2. The immunoprecipitate was mock treated (-) or treated (+) with phosphatase (PPase). *Antibody:* Affinity purified rabbit anti-phospho MCM2 (S53) antibody A300-756A (lot A300-756A-4) used at 0.1 µg/ml. To examine total MCM2, the membrane was stripped and blotted with A300-191A at 0.1 µg/ml. *Detection:* Chemiluminescence with exposure times of 10 seconds (A and B).



Detection of human and mouse Phospho MCM2 (S53) by immunohistochemistry. *Sample:* FFPE sections of human breast carcinoma (left) and mouse renal cell carcinoma (right). *Antibody:* Affinity purified rabbit anti-phospho MCM2 (S53) (Cat. No. A300-756A Lot4) used at a dilution of 1:200 (1 µg/ml). *Detection:* DAB