



SZABO SCANDIC

Part of Europa Biosite

Produktinformation



Forschungsprodukte & Biochemikalien



Zellkultur & Verbrauchsmaterial



Diagnostik & molekulare Diagnostik



Laborgeräte & Service

Weitere Information auf den folgenden Seiten!
See the following pages for more information!



Lieferung & Zahlungsart

siehe unsere [Liefer- und Versandbedingungen](#)

Zuschläge

- Mindermengenzuschlag
- Trockeneiszuschlag
- Gefahrgutzuschlag
- Expressversand

SZABO-SCANDIC HandelsgmbH

Quellenstraße 110, A-1100 Wien

T. +43(0)1 489 3961-0

F. +43(0)1 489 3961-7

mail@szabo-scandic.com

www.szabo-scandic.com

[linkedin.com/company/szaboscandic](https://www.linkedin.com/company/szaboscandic) 

Phospho KAP-1 (S824) Antibody

Rabbit Polyclonal

Antigen Affinity Purified Protein ID NP_005753.1

Catalog No. A300-767A-T GeneID 10155

Lot No. A300-767A-T-5



APPLICATIONS	WB, IP, IHC, ICC, ICC-IF
SPECIES REACTIVITY	Human, Mouse
AMOUNT	20 µl (2 blots)
CONCENTRATION	40 µg/ml
STORAGE/SHELF LIFE	2 - 8° C / 1 year from date of receipt
PHYSICAL STATE	Liquid
BUFFER	Tris-buffered Saline containing 0.1% BSA and 0.09% Sodium Azide
ISOTYPE	IgG
ORIGIN	USA
PRODUCTION PROCEDURES	Antibody was affinity purified using an epitope specific to Phospho KAP-1 (S824) immobilized on solid support.

Immunogen for A300-767A-T was a synthetic phosphorylated peptide, which represented a portion of human KRAB-Associated Protein 1 surrounding Serine 824 according to the numbering given in entry NP_005753.1 (GeneID 10155).

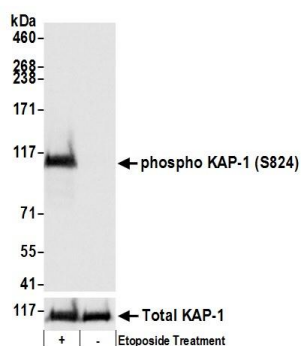
APPLICATIONS Centrifuge tube to remove product from lid. Optimal working dilutions should be determined experimentally by the investigator. Prepare working dilution immediately before use.

Western Blot	1:1000
Immunoprecipitation	The antibody contained within A300-767A-T has been qualified for use in immunoprecipitation; however, we recommend using the alternative formulation of this antibody found as product A300-767A.
Immunohistochemistry	1:100 to 1:400. Epitope retrieval with citrate buffer pH6.0 is recommended for FFPE tissue sections.
Immunocytochemistry	1:100 - 1:500
Immunofluorescence (ICC)	1:50 - 1:250

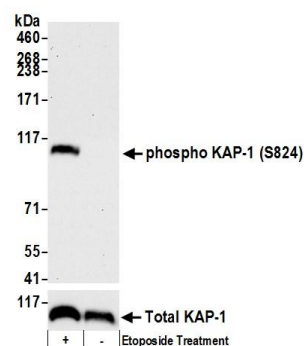
APPLICATION NOTES Western blot of immunoprecipitates performed using Normal Pig Serum (Cat. No. S100-020), Goat anti-Rabbit Light Chain HRP Conjugate (Cat. No. A120-113P) and 4-8% SDS-PAGE (link to IP-western blot protocol in Additional Info section below).

ADDITIONAL INFO Western blot of lysates performed using standard western blot reagents and 4-8% SDS-PAGE. <https://www.bethyl.com/product/A300-767A-T>
Use the link above to view SDS, a current list of citations, and other product specific information. IP-western blot protocol https://www.bethyl.com/content/protocol_IP_WB

This document certifies that this product has met all of the quality control standards defined by Bethyl Laboratories, Inc.
Eric McIntush, PhD | Chief Scientific Officer Date: June 28, 2019



Detection of human Phospho KAP-1 (S824) by western blot. *Samples:* Whole cell lysate (50 µg) from HEK293T cells treated with 100 µM etoposide (+) or mock treated (-). *Antibodies:* Affinity purified rabbit anti-Phospho KAP-1 (S824) antibody A300-767A-T (lot A300-767A-T-5) used for WB at 1:1000. *Detection:* Chemiluminescence with an exposure time of 1 second. Lower panel shows western blot for total KAP-1 using affinity purified rabbit anti-KAP-1 antibody A300-274A at 0.1 µg/ml.



Detection of mouse Phospho KAP-1 (S824) by western blot. *Samples:* Whole cell lysate (15 µg) from NIH 3T3 cells treated with 100 µM etoposide (+) or mock treated (-). *Antibodies:* Affinity purified rabbit anti-Phospho KAP-1 (S824) antibody A300-767A-T (lot A300-767A-T-5) used for WB at 1:1000. *Detection:* Chemiluminescence with an exposure time of 30 seconds. Lower panel shows western blot for total KAP-1 using rabbit anti-KAP-1 recombinant monoclonal antibody A700-014 at 1:1000.