



SZABO SCANDIC

Part of Europa Biosite

Produktinformation



Forschungsprodukte & Biochemikalien



Zellkultur & Verbrauchsmaterial



Diagnostik & molekulare Diagnostik



Laborgeräte & Service

Weitere Information auf den folgenden Seiten!
See the following pages for more information!



Lieferung & Zahlungsart

siehe unsere [Liefer- und Versandbedingungen](#)

Zuschläge

- Mindermengenzuschlag
- Trockeneiszuschlag
- Gefahrgutzuschlag
- Expressversand

SZABO-SCANDIC HandelsgmbH

Quellenstraße 110, A-1100 Wien

T. +43(0)1 489 3961-0

F. +43(0)1 489 3961-7

mail@szabo-scandic.com

www.szabo-scandic.com

[linkedin.com/company/szaboscandic](https://www.linkedin.com/company/szaboscandic) 

MED12 Antibody

Rabbit Polyclonal

Antigen Affinity Purified Protein ID NP_005111.2

Catalog No. A300-774A-T GenelD 9968

Lot No. A300-774A-T-3

APPLICATIONS	WB, IP, IHC
SPECIES REACTIVITY	Human, Mouse
PRESUMED REACTIVITY	Based on 100% sequence identity, this antibody is predicted to react with Chimpanzee
AMOUNT	10 µl
CONCENTRATION	1000 µg/ml
STORAGE/SHELF LIFE	2 – 8°C / 1 year from date of receipt
PHYSICAL STATE	Liquid
BUFFER	Tris-citrate/phosphate buffer, pH 7 to 8 containing 0.09% Sodium Azide
ISOTYPE	IgG
ORIGIN	USA
PRODUCTION PROCEDURES	Antibody was affinity purified using an epitope specific to MED12 immobilized on solid support.

The epitope recognized by A300-774A maps to a region between residue 2127 and the C-terminus (residue 2177) of human Mediator of RNA Polymerase II Transcription, subunit 12 using the numbering given in entry NP_005111.2 (GeneID 9968).

Immunoglobulin concentration was determined by extinction coefficient: absorbance at 280 nm of 1.4 equals 1.0 mg of IgG.

APPLICATIONS Centrifuge tube to remove product from lid. Optimal working dilutions should be determined experimentally by the investigator. Prepare working dilution immediately before use.

Western Blot 1:2,000 – 1:10,000

Immunoprecipitation 2 – 10 µg/mg lysate

Immunohistochemistry 1:1,000 to 1:5,000. Epitope retrieval with citrate buffer pH6.0 is recommended for FFPE tissue sections.

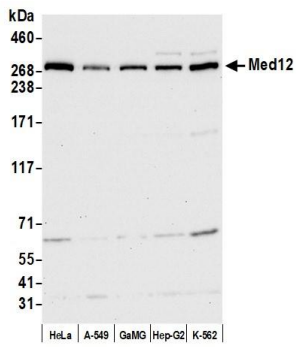
IHC HUMAN CONTROLS Breast Carcinoma, Ovarian Carcinoma, Prostate Carcinoma

IHC MOUSE CONTROLS Colon Carcinoma CT26, Renal Cell Carcinoma, Teratoma

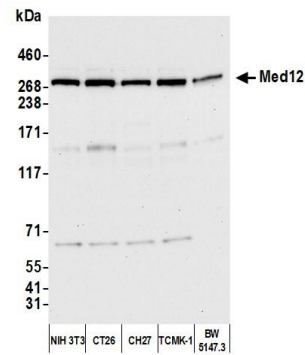
ADDITIONAL INFO <https://www.bethyl.com/product/A300-774A-T>

Use the link above to view SDS, a current list of citations, and other product specific information. IP-western blot protocol: https://www.bethyl.com/content/protocol_IP_WB

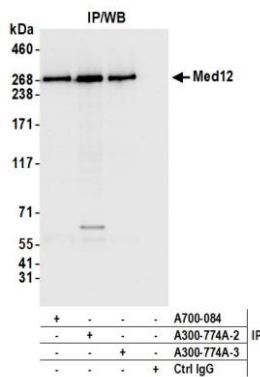
This document certifies that this product has met all of the quality control standards defined by Bethyl Laboratories, Inc.
Michael Spencer, PhD Date: June 8, 2022



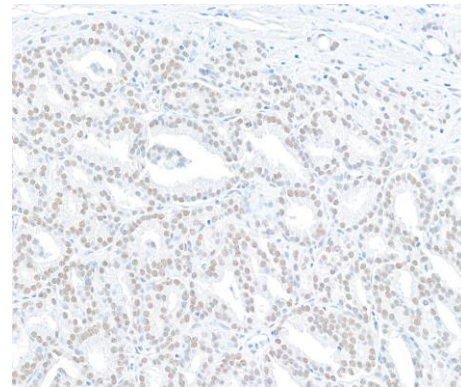
Detection of human Med12 by western blot. *Samples:* Whole cell lysate (10 µg) from HeLa, A-549, GaMG, Hep-G2, and K-562 cells prepared using NETN lysis buffer. *Antibody:* Affinity purified rabbit anti-Med12 antibody (A300-774A-T lot 3) used for WB at 0.04 µg/ml. *Detection:* Chemiluminescence with an exposure time of 10 seconds.



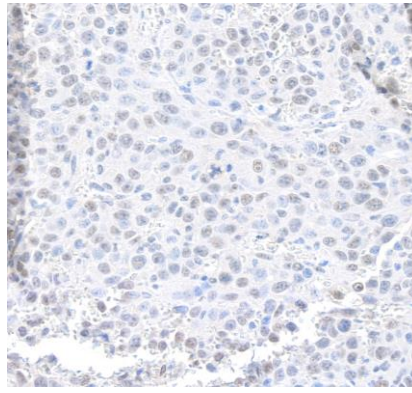
Detection of mouse Med12 by western blot. *Samples:* Whole cell lysate (10 µg) from NIH 3T3, CT26, CH27, TCMK-1, and BW5147.3 cells prepared using NETN lysis buffer. *Antibody:* Affinity purified rabbit anti-Med12 antibody (A300-774A-T lot 3) used for WB at 0.04 µg/ml. *Detection:* Chemiluminescence with an exposure time of 10 seconds.



Detection of human Med12 by western blot of immunoprecipitates. *Samples:* Whole cell lysate (1.0 mg per IP reaction; 20% of IP loaded) from HeLa cells prepared using NETN lysis buffer. *Antibodies:* Affinity purified rabbit anti-Med12 antibody (A300-774A-T lot 3) used for IP at 6 µg per reaction. Med12 was also immunoprecipitated by a previous lot of this antibody (A300-774A-T lot 2) and a second antibody against a different epitope of Med12 (A700-084). For blotting immunoprecipitated Med12, A300-774A-T was used at 0.04 µg/ml. *Detection:* Chemiluminescence with an exposure time of 1 second.



Detection of human MED12 by immunohistochemistry. *Sample:* FFPE section of human prostate carcinoma. *Antibody:* Affinity purified rabbit anti-MED12 (A300-774A-T Lot 3) used at a dilution of 1:5,000 (0.2µg/ml). *Detection:* DAB



Detection of mouse MED12 by immunohistochemistry.

Sample: FFPE section of mouse renal cell carcinoma.

Antibody: Affinity purified rabbit anti-MED12 (A300-774A-T Lot 3) used at a dilution of 1:1,000 (1 µg/ml). *Detection:* DAB