



SZABO SCANDIC

Part of Europa Biosite

Produktinformation



Forschungsprodukte & Biochemikalien



Zellkultur & Verbrauchsmaterial



Diagnostik & molekulare Diagnostik



Laborgeräte & Service

Weitere Information auf den folgenden Seiten!
See the following pages for more information!



Lieferung & Zahlungsart

siehe unsere [Liefer- und Versandbedingungen](#)

Zuschläge

- Mindermengenzuschlag
- Trockeneiszuschlag
- Gefahrgutzuschlag
- Expressversand

SZABO-SCANDIC HandelsgmbH

Quellenstraße 110, A-1100 Wien

T. +43(0)1 489 3961-0

F. +43(0)1 489 3961-7

mail@szabo-scandic.com

www.szabo-scandic.com

[linkedin.com/company/szaboscandic](https://www.linkedin.com/company/szaboscandic) 

MAVS/VISA Antibody

Rabbit Polyclonal

Antigen Affinity Purified

Protein ID AAH44952.1

Catalog No. A300-782A

GeneID 57506

Lot No. A300-782A-1



APPLICATIONS WB, IP, IHC, ICC

SPECIES REACTIVITY Human

AMOUNT 100 µl

CONCENTRATION 200 µg/ml

STORAGE/SHELF LIFE 2 – 8° C / 1 year from date of receipt

PHYSICAL STATE Liquid

BUFFER Tris-buffered Saline containing 0.1% BSA and 0.09% Sodium Azide

ISOTYPE IgG

ORIGIN USA

PRODUCTION PROCEDURES Antibody was affinity purified using an epitope specific to MAVS/VISA immobilized on solid support.

The epitope recognized by A300-782A maps to a region between residue 150 and 200 of human Mitochondrial Anti-Viral Signaling Protein (Virus-Induced Signaling Adapter) using the numbering given in entry AAH44952.1 (GeneID 57506).

Immunoglobulin concentration was determined by extinction coefficient: absorbance at 280 nm of 1.4 equals 1.0 mg of IgG.

APPLICATIONS Centrifuge tube to remove product from lid. Optimal working dilutions should be determined experimentally by the investigator. Prepare working dilution immediately before use.

Western Blot 1:2,000 – 1:10,000

Immunoprecipitation 2 – 5 µg/mg lysate

Immunohistochemistry 1:100 – 1:500. Epitope retrieval with Tris-EDTA pH 9.0 is recommended for FFPE tissue sections.

Immunocytochemistry 1:100 – 1:500. Epitope retrieval with Tris-EDTA pH 9.0 is recommended for FFPE cell sections.

APPLICATION NOTES Western blot of immunoprecipitates performed using Normal Pig Serum (Cat. No. S100-020), Goat anti-Rabbit Light Chain HRP Conjugate (Cat. No. A120-113P) and 4-20% SDS-PAGE (link to IP-western blot protocol in Additional Info section below).

Western blot of lysates performed using standard western blot reagents and 4-20% SDS-PAGE.

IHC HUMAN CONTROLS Breast Carcinoma, Colon Carcinoma, Non-Small Cell Lung Cancer, K-562 Cells

ADDITIONAL INFO <https://www.bethyl.com/product/A300-782A>

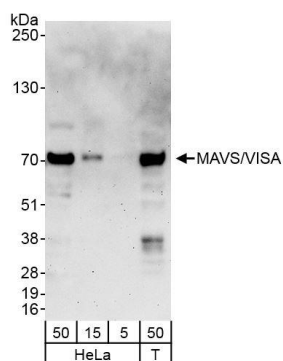
Use the link above to view SDS, a current list of citations, and other product specific information.

IP-western blot protocol https://www.bethyl.com/content/protocol_IP_WB

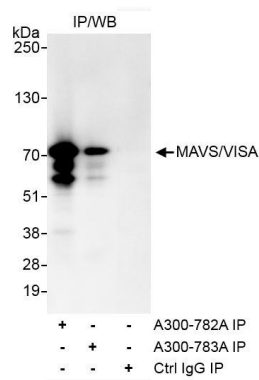
This document certifies that this product has met all of the quality control standards defined by Bethyl Laboratories, Inc.

Eric McIntush, PhD | Chief Scientific Officer

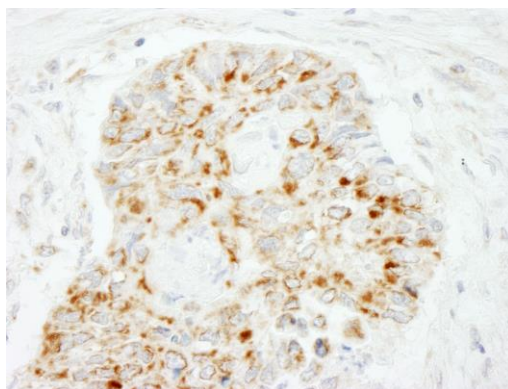
Date: October 17, 2019



Detection of human MAVS/VISA by western blot. *Samples:* Whole cell lysate from HeLa (5, 15 and 50 µg) and HEK293T (T; 50 µg) cells. *Antibodies:* Affinity purified rabbit anti-MAVS/VISA antibody A300-782A (lot A300-782A-1) used for WB at 0.04 µg/ml. *Detection:* Chemiluminescence with exposure time of 3 minutes.



Detection of human MAVS/VISA by western blot of immunoprecipitates. *Samples:* Whole cell lysate (1 mg for IP, 20% of IP loaded) from HeLa cells. *Antibodies:* Affinity purified rabbit anti-MAVS/VISA antibody A300-782A (lot A300-782A-1) used for IP at 3 µg/mg lysate. MAVS/VISA was also immunoprecipitated by rabbit anti-MAVS/VISA antibody A300-783A. For blotting immunoprecipitated MAVS/VISA, A300-782A was used at 1.0 µg/ml. *Detection:* Chemiluminescence with exposure time of 30 seconds.



Detection of human MAVS/VISA by immunohistochemistry. *Sample:* FFPE section of human lung carcinoma. *Antibody:* Affinity purified rabbit anti-MAVS/VISA (Cat. No. A300-782A lot 1) used at a dilution of 1:200 (1 µg/ml). *Detection:* DAB