



SZABO SCANDIC

Part of Europa Biosite

Produktinformation



Forschungsprodukte & Biochemikalien



Zellkultur & Verbrauchsmaterial



Diagnostik & molekulare Diagnostik



Laborgeräte & Service

Weitere Information auf den folgenden Seiten!
See the following pages for more information!



Lieferung & Zahlungsart

siehe unsere [Liefer- und Versandbedingungen](#)

Zuschläge

- Mindermengenzuschlag
- Trockeneiszuschlag
- Gefahrgutzuschlag
- Expressversand

SZABO-SCANDIC HandelsgmbH

Quellenstraße 110, A-1100 Wien

T. +43(0)1 489 3961-0

F. +43(0)1 489 3961-7

mail@szabo-scandic.com

www.szabo-scandic.com

[linkedin.com/company/szaboscandic](https://www.linkedin.com/company/szaboscandic) 

CDT1 Antibody

Rabbit Polyclonal

Antigen Affinity Purified	RefSeq ID	NP_112190.1
Catalog No. A300-786A-T	Uniprot ID	Q9H211
Lot No. 1	GeneID	81620

APPLICATIONS	WB, IP, IHC
SPECIES REACTIVITY	Human
AMOUNT	10 µl
CONCENTRATION	1000 µg/ml
STORAGE/SHELF LIFE	2 - 8°C / 1 year from date of receipt
PHYSICAL STATE	Liquid
BUFFER	Tris-citrate/phosphate buffer, pH 7 to 8 containing 0.09% Sodium Azide
ISOTYPE	IgG
ORIGIN	USA
PRODUCTION PROCEDURES	Antibody was affinity purified using an epitope specific to CDT1 immobilized on solid support.

The epitope recognized by A300-786A maps to a region between residue 500 and the C-terminus (residue 546) of human Chromatin Licensing and DNA Replication Factor 1 using the numbering given in entry NP_112190.1 (GeneID 81620).

Immunoglobulin concentration was determined using Beer's Law where 1mg/mL IgG has an A280 of 1.4.

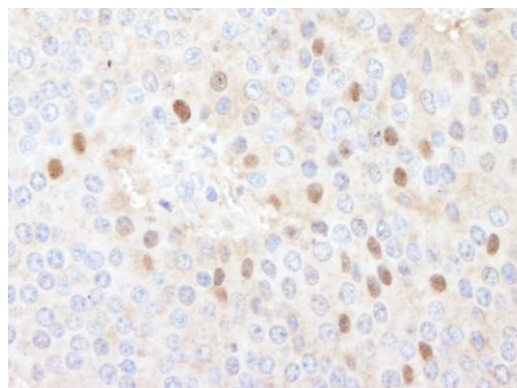
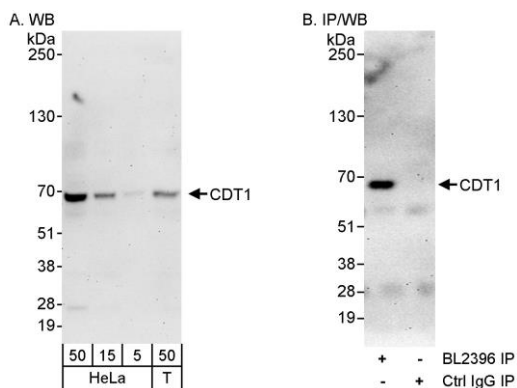
APPLICATIONS Centrifuge tube to remove product from lid. Optimal working dilutions should be determined experimentally by the investigator. Prepare working dilution immediately before use.

Western Blot	1:1000 - 1:2500
Immunoprecipitation	6 µg/mg lysate
Immunohistochemistry	1:1000 - 1:5000. Epitope retrieval with citrate buffer pH 6.0 is recommended for FFPE tissue sections.

IHC HUMAN CONTROLS Pancreatic Islet Cell Tumor

ADDITIONAL INFO <https://www.fortislife.com/p/A300-786A-T>
Use the link above to view SDS, a current list of citations, and other product specific information.

This document certifies that this product has met all of the quality control standards defined by Bethyl Laboratories, Inc.
Michael Spencer, PhD Date: January 31, 2024



Detection of human CDT1 by western blot and immunoprecipitation. *Samples:* Whole cell lysate from HeLa (5, 15 and 50 µg for WB; 1 mg for IP, 20% of IP loaded) and HEK293T (T; 50 µg) cells. *Antibodies:* Affinity purified rabbit anti-CDT1 antibody BL2396 (Cat. No. A300-786A) used for WB at 1 µg/ml (A and B) and used for IP at 3 µg/mg lysate (B). *Detection:* Chemiluminescence with exposure times of 3 minutes (A and B).

Detection of human CDT1 by immunohistochemistry. *Sample:* FFPE section of human islet cell carcinoma. *Antibody:* Affinity purified rabbit anti-CDT1 (Cat. No. A300-786A Lot1) used at a dilution of 1:1,000 (1 µg/ml). *Detection:* DAB