



# SZABO SCANDIC

Part of Europa Biosite

## Produktinformation



Forschungsprodukte & Biochemikalien



Zellkultur & Verbrauchsmaterial



Diagnostik & molekulare Diagnostik



Laborgeräte & Service

Weitere Information auf den folgenden Seiten!  
See the following pages for more information!



### Lieferung & Zahlungsart

siehe unsere [Liefer- und Versandbedingungen](#)

### Zuschläge

- Mindermengenzuschlag
- Trockeneiszuschlag
- Gefahrgutzuschlag
- Expressversand

### SZABO-SCANDIC HandelsgmbH

Quellenstraße 110, A-1100 Wien

T. +43(0)1 489 3961-0

F. +43(0)1 489 3961-7

[mail@szabo-scandic.com](mailto:mail@szabo-scandic.com)

[www.szabo-scandic.com](http://www.szabo-scandic.com)

[linkedin.com/company/szaboscandic](https://www.linkedin.com/company/szaboscandic) 

# MED1 Antibody

Rabbit Polyclonal

Antigen Affinity Purified Protein ID NP\_004765.2

Catalog No. A300-793A GeneID 5469

Lot No. A300-793A-11

---

<b>APPLICATIONS</b>	WB, IP, IHC
<b>SPECIES REACTIVITY</b>	Human, Mouse
<b>PRESUMED REACTIVITY</b>	Based on 100% sequence identity, this antibody is predicted to react with Orangutan
<b>AMOUNT</b>	100 µl
<b>CONCENTRATION</b>	1000 µg/ml
<b>STORAGE/SHELF LIFE</b>	2 – 8°C / 1 year from date of receipt
<b>PHYSICAL STATE</b>	Liquid
<b>BUFFER</b>	Tris-citrate/phosphate buffer, pH 7 to 8 containing 0.09% Sodium Azide
<b>ISOTYPE</b>	IgG
<b>ORIGIN</b>	USA
<b>PRODUCTION PROCEDURES</b>	Antibody was affinity purified using an epitope specific to MED1 immobilized on solid support.

The epitope recognized by A300-793A maps to a region between residue 1525 and the C-terminus (residue 1581) of human Mediator complex subunit 1 using the numbering given in entry NP\_004765.2 (GeneID 5469).

Immunoglobulin concentration was determined by extinction coefficient: absorbance at 280 nm of 1.4 equals 1.0 mg of IgG.

**APPLICATIONS** Centrifuge tube to remove product from lid. Optimal working dilutions should be determined experimentally by the investigator. Prepare working dilution immediately before use.

Western Blot 1:2,000 – 1:10,000

Immunoprecipitation 2 – 10 µg/mg lysate

Immunohistochemistry 1:1,000 to 1:5,000. Epitope retrieval with citrate buffer pH6.0 is recommended for FFPE tissue sections.

**IHC HUMAN CONTROLS** Breast Carcinoma, Colon Carcinoma, Ovarian Carcinoma, Prostate Carcinoma, Stomach Adenocarcinoma, Testicular Seminoma

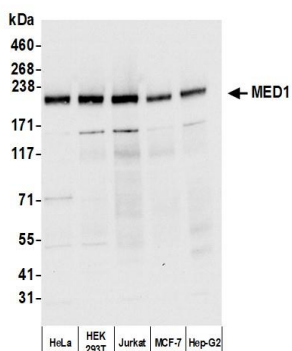
**IHC MOUSE CONTROLS** Renal Cell Carcinoma

**ADDITIONAL INFO** <https://www.bethyl.com/product/A300-793A>

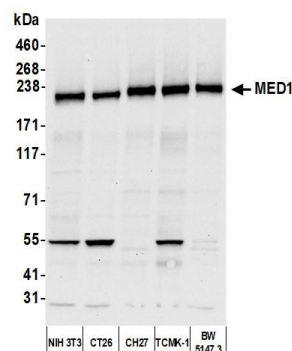
Use the link above to view SDS, a current list of citations, and other product specific information.

IP-western blot protocol: [https://www.bethyl.com/content/protocol\\_IP\\_WB](https://www.bethyl.com/content/protocol_IP_WB)

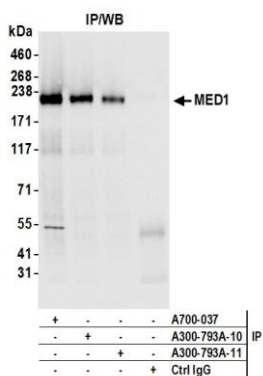
This document certifies that this product has met all of the quality control standards defined by Bethyl Laboratories, Inc.  
Michael Spencer, PhD Date: March 24, 2022



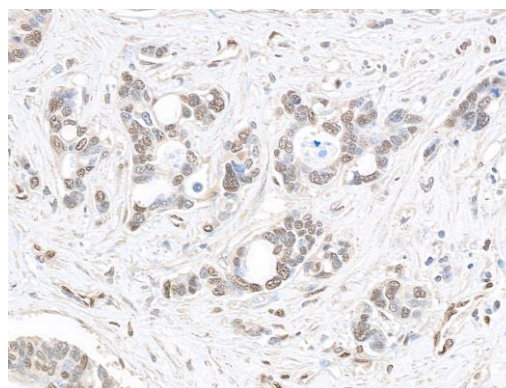
**Detection of human MED1 by western blot.** *Samples:* Whole cell lysate (5 µg) from HeLa, HEK293T, Jurkat, MCF-7, and Hep-G2 cells prepared using NETN lysis buffer. *Antibody:* Affinity purified rabbit anti-MED1 antibody (A300-793A lot 11) used for WB at 0.1 µg/ml. *Detection:* Chemiluminescence with an exposure time of 3 seconds.



**Detection of mouse MED1 by western blot.** *Samples:* Whole cell lysate (10 µg) from NIH 3T3, CT26, CH27, TCMK-1, and BW5147.3 cells prepared using NETN lysis buffer. *Antibody:* Affinity purified rabbit anti-MED1 antibody (A300-793A lot 11) used for WB at 0.1 µg/ml. *Detection:* Chemiluminescence with an exposure time of 10 seconds.



**Detection of human MED1 by western blot of immunoprecipitates.** *Samples:* Whole cell lysate (0.5 mg per IP reaction; 5% of IP loaded) from HEK293T cells prepared using NETN lysis buffer. *Antibodies:* Affinity purified rabbit anti-MED1 antibody (A300-793A lot 11) used for IP at 6 µg per reaction. MED1 was also immunoprecipitated by a previous lot of this antibody (A300-793A lot 10) and a second antibody against a different epitope of MED1 (A700-037). For blotting immunoprecipitated MED1, A300-793A was used at 0.1 µg/ml. *Detection:* Chemiluminescence with an exposure time of 1 second.



**Detection of human MED1 by immunohistochemistry.** *Sample:* FFPE section of human ovarian carcinoma. *Antibody:* Affinity purified rabbit anti-MED1 antibody (A300-793A lot 11) used at 1:5000 (0.2µg/ml). *Secondary:*HRP-conjugated goat anti-rabbit IgG (A120-501P).