



SZABO SCANDIC

Part of Europa Biosite

Produktinformation



Forschungsprodukte & Biochemikalien



Zellkultur & Verbrauchsmaterial



Diagnostik & molekulare Diagnostik



Laborgeräte & Service

Weitere Information auf den folgenden Seiten!
See the following pages for more information!



Lieferung & Zahlungsart

siehe unsere [Liefer- und Versandbedingungen](#)

Zuschläge

- Mindermengenzuschlag
- Trockeneiszuschlag
- Gefahrgutzuschlag
- Expressversand

SZABO-SCANDIC HandelsgmbH

Quellenstraße 110, A-1100 Wien

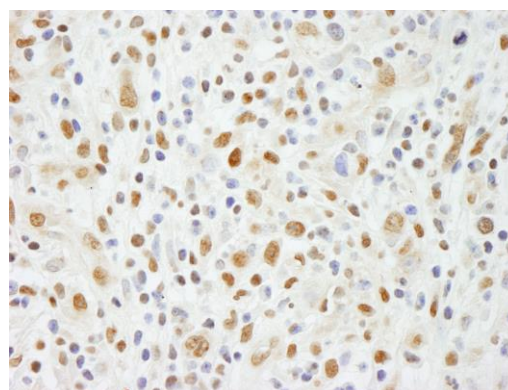
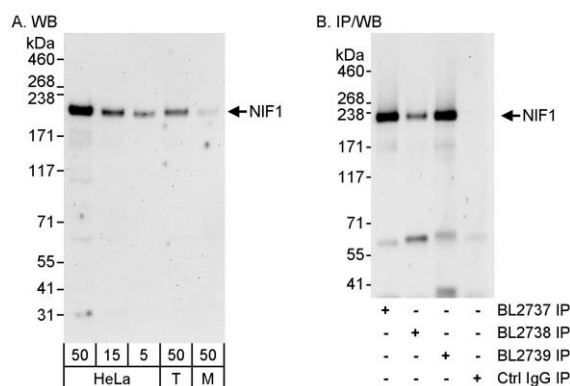
T. +43(0)1 489 3961-0

F. +43(0)1 489 3961-7

mail@szabo-scandic.com

www.szabo-scandic.com

[linkedin.com/company/szaboscandic](https://www.linkedin.com/company/szaboscandic) 



Detection of human and mouse NIF1 by western blot (h&m) and immunoprecipitation (h). *Samples:* Whole cell lysate from HeLa (5, 15 and 50 μ g for WB; 1 mg for IP, 20% of IP loaded), HEK293T (T; 50 μ g) and mouse NIH 3T3 (M; 50 μ g) cells. *Antibodies:* Affinity purified rabbit anti-NIF1 antibody BL2739 (Cat. No. A300-798A) used for WB at 0.04 μ g/ml (A) and at 1 μ g/ml (B) and used for IP at 3 μ g/mg lysate (B). NIF1 was also immunoprecipitated by rabbit anti-NIF1 antibodies BL2737 (Cat. No. A300-797A) and BL2738. *Detection:* Chemiluminescence with exposure times of 3 minutes (A) and 30 seconds (B).

Detection of human NIF1 by immunohistochemistry. *Sample:* FFPE section of human Hodgkin's lymphoma. *Antibody:* Affinity purified rabbit anti-NIF1 (Cat. No. A300-798A Lot1) used at a dilution of 1:200 (1 μ g/ml). *Detection:* DAB