



# SZABO SCANDIC

Part of Europa Biosite

## Produktinformation



Forschungsprodukte & Biochemikalien



Zellkultur & Verbrauchsmaterial



Diagnostik & molekulare Diagnostik



Laborgeräte & Service

Weitere Information auf den folgenden Seiten!  
See the following pages for more information!



### Lieferung & Zahlungsart

siehe unsere [Liefer- und Versandbedingungen](#)

### Zuschläge

- Mindermengenzuschlag
- Trockeneiszuschlag
- Gefahrgutzuschlag
- Expressversand

### SZABO-SCANDIC HandelsgmbH

Quellenstraße 110, A-1100 Wien

T. +43(0)1 489 3961-0

F. +43(0)1 489 3961-7

[mail@szabo-scandic.com](mailto:mail@szabo-scandic.com)

[www.szabo-scandic.com](http://www.szabo-scandic.com)

[linkedin.com/company/szaboscandic](https://www.linkedin.com/company/szaboscandic) 

# CRABP2 Antibody

Rabbit Polyclonal

Antigen Affinity Purified

Protein ID NP\_001869.1

Catalog No. A300-809A

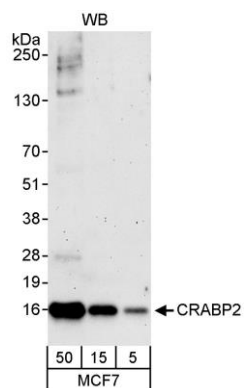
GeneID 1382

Lot No. A300-809A-1

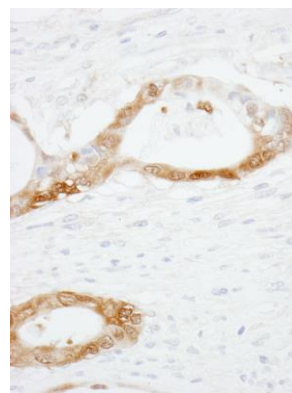


<b>APPLICATIONS</b>	WB, IHC						
<b>SPECIES REACTIVITY</b>	Human						
<b>AMOUNT</b>	100 µl						
<b>CONCENTRATION</b>	200 µg/ml						
<b>STORAGE/SHELF LIFE</b>	2 - 8° C / 1 year from date of receipt						
<b>PHYSICAL STATE</b>	Liquid						
<b>BUFFER</b>	Tris-buffered Saline containing 0.1% BSA and 0.09% Sodium Azide						
<b>ISOTYPE</b>	IgG						
<b>ORIGIN</b>	USA						
<b>PRODUCTION PROCEDURES</b>	<p>Antibody was affinity purified using an epitope specific to CRABP2 immobilized on solid support.</p> <p>The epitope recognized by A300-809A maps to a region between residue 80 and the C-terminus (residue 138) of human Cellular Retinoic Acid Binding Protein 2 using the numbering given in entry NP_001869.1 (GeneID 1382).</p> <p>Immunoglobulin concentration was determined by extinction coefficient: absorbance at 280 nm of 1.4 equals 1.0 mg of IgG.</p>						
<b>APPLICATIONS</b>	<p>Centrifuge tube to remove product from lid. Optimal working dilutions should be determined experimentally by the investigator. Prepare working dilution immediately before use.</p> <table><tr><td>Western Blot</td><td>1:2,000 - 1:10,000</td></tr><tr><td>Immunoprecipitation</td><td>Not recommended. While trace amounts of CRABP2 can be immunoprecipitated by A300-809A, the efficiency is very low.</td></tr><tr><td>Immunohistochemistry</td><td>1:200 - 1:1,000. Epitope retrieval with citrate buffer pH 6.0 is recommended for FFPE tissue sections.</td></tr></table>	Western Blot	1:2,000 - 1:10,000	Immunoprecipitation	Not recommended. While trace amounts of CRABP2 can be immunoprecipitated by A300-809A, the efficiency is very low.	Immunohistochemistry	1:200 - 1:1,000. Epitope retrieval with citrate buffer pH 6.0 is recommended for FFPE tissue sections.
Western Blot	1:2,000 - 1:10,000						
Immunoprecipitation	Not recommended. While trace amounts of CRABP2 can be immunoprecipitated by A300-809A, the efficiency is very low.						
Immunohistochemistry	1:200 - 1:1,000. Epitope retrieval with citrate buffer pH 6.0 is recommended for FFPE tissue sections.						
<b>APPLICATION NOTES</b>	Western blot of lysates performed using standard western blot reagents and 4-12% SDS-PAGE.						
<b>IHC HUMAN CONTROLS</b>	Breast Carcinoma, Ovarian Carcinoma, Prostate Carcinoma						
<b>ADDITIONAL INFO</b>	<p><a href="https://www.bethyl.com/product/A300-809A">https://www.bethyl.com/product/A300-809A</a></p> <p>Use the link above to view SDS, a current list of citations, and other product specific information.</p>						

This document certifies that this product has met all of the quality control standards defined by Bethyl Laboratories, Inc.  
Eric McIntush, PhD | Chief Scientific Officer Date: June 21, 2019



**Detection of human CRABP2 by western blot.** *Samples:* Whole cell lysate (5, 15 and 50 µg) from MCF-7 cells.  
*Antibodies:* Affinity purified rabbit anti-CRABP2 antibody (Cat. No. A300-809A) used for WB at 0.04 µg/ml.  
*Detection:* Chemiluminescence with an exposure time of 3 minutes.



**Detection of human CRABP2 by immunohistochemistry.** *Sample:* FFPE section of human prostate carcinoma.  
*Antibody:* Affinity purified rabbit anti-CRABP2 (Cat. No. A300-809A) used at a dilution of 1:1,000 (1 µg/ml).  
*Detection:* DAB