



# SZABO SCANDIC

Part of Europa Biosite

## Produktinformation



Forschungsprodukte & Biochemikalien



Zellkultur & Verbrauchsmaterial



Diagnostik & molekulare Diagnostik



Laborgeräte & Service

Weitere Information auf den folgenden Seiten!  
See the following pages for more information!



### Lieferung & Zahlungsart

siehe unsere [Liefer- und Versandbedingungen](#)

### Zuschläge

- Mindermengenzuschlag
- Trockeneiszuschlag
- Gefahrgutzuschlag
- Expressversand

### SZABO-SCANDIC HandelsgmbH

Quellenstraße 110, A-1100 Wien

T. +43(0)1 489 3961-0

F. +43(0)1 489 3961-7

[mail@szabo-scandic.com](mailto:mail@szabo-scandic.com)

[www.szabo-scandic.com](http://www.szabo-scandic.com)

[linkedin.com/company/szaboscandic](https://www.linkedin.com/company/szaboscandic) 

# BRG1 /SMARCA4 Antibody

Rabbit Polyclonal

Antigen Affinity Purified Protein ID NP\_003063.2  
Catalog No. A300-813A GeneID 6597  
Lot No. A300-813A-5



**APPLICATIONS** WB, IP, IHC  
**SPECIES REACTIVITY** Human, Mouse  
**AMOUNT** 100 µl  
**CONCENTRATION** 200 µg/ml  
**STORAGE/SHELF LIFE** 2 – 8° C / 1 year from date of receipt  
**PHYSICAL STATE** Liquid  
**BUFFER** Tris-buffered Saline containing 0.1% BSA and 0.09% Sodium Azide  
**ISOTYPE** IgG  
**ORIGIN** USA  
**PRODUCTION PROCEDURES** Antibody was affinity purified using an epitope specific to BRG1 /SMARCA4 immobilized on solid support.

The epitope recognized by A300-813A maps to a region between residue 75 and 125 of human BRM/SWI2-Related Gene 1 (SWI/SNF Related, Matrix Associated, Actin Dependent Regulator of Chromatin, Subfamily A, member 4) using the numbering given in entry NP\_003063.2 (GeneID 6597).

Immunoglobulin concentration was determined by extinction coefficient: absorbance at 280 nm of 1.4 equals 1.0 mg of IgG.

**APPLICATIONS** Centrifuge tube to remove product from lid. Optimal working dilutions should be determined experimentally by the investigator. Prepare working dilution immediately before use.

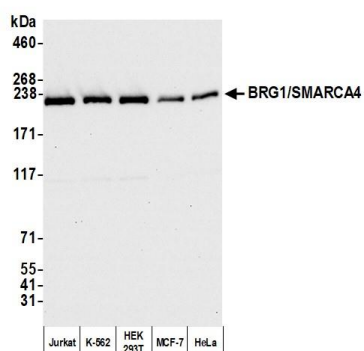
Western Blot 1:2,000 – 1:10,000  
Immunoprecipitation 2 – 10 µg/mg lysate  
Immunohistochemistry 1:250 – 1:2,000. Epitope retrieval with citrate buffer pH 6.0 is recommended for FFPE tissue sections.

**IHC HUMAN CONTROLS** Breast Carcinoma, Non-Small Cell Lung Cancer

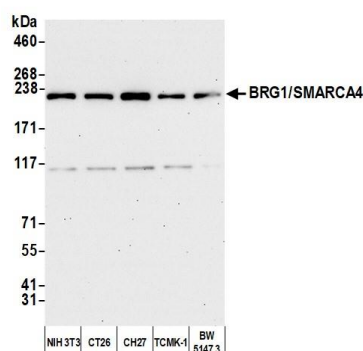
**IHC MOUSE CONTROLS** Colon Carcinoma CT26

**ADDITIONAL INFO** <https://www.bethyl.com/product/A300-813A>  
Use the link above to view SDS, a current list of citations, and other product specific information.  
IP-western blot protocol: [https://www.bethyl.com/content/protocol\\_IP\\_WB](https://www.bethyl.com/content/protocol_IP_WB)

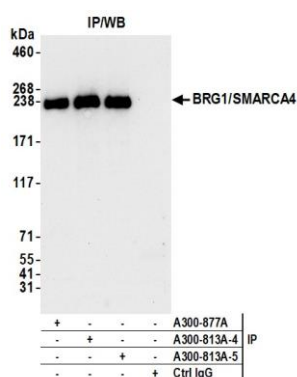
This document certifies that this product has met all of the quality control standards defined by Bethyl Laboratories, Inc.  
Brian McWilliams, PhD Date: April 14, 2021

**Detection of human BRG1/SMARCA4 by western blot.**

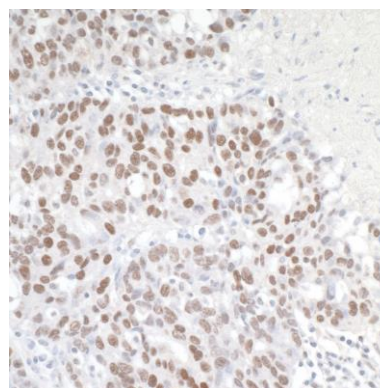
*Samples:* Whole cell lysate (10 µg) from Jurkat, K-562, HEK293T, MCF-7, and HeLa cells prepared using NETN lysis buffer. *Antibody:* Affinity purified rabbit anti-BRG1/SMARCA4 antibody (A300-813A lot 5) used for WB at 0.04 µg/ml. *Detection:* Chemiluminescence with an exposure time of 10 seconds.

**Detection of mouse BRG1/SMARCA4 by western blot.**

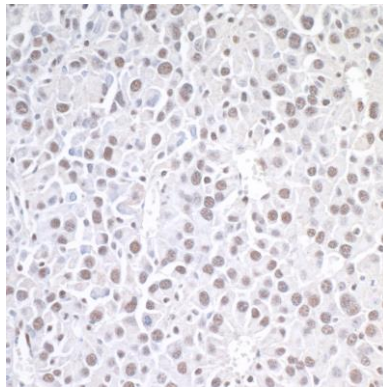
*Samples:* Whole cell lysate (10 µg) from NIH 3T3, CT26, CH27, TCMK-1, and BW5147.3 cells prepared using NETN lysis buffer. *Antibody:* Affinity purified rabbit anti-BRG1/SMARCA4 antibody (A300-813A lot 5) used for WB at 0.04 µg/ml. *Detection:* Chemiluminescence with an exposure time of 30 seconds.



**Detection of human BRG1/SMARCA4 by western blot of immunoprecipitates.** *Samples:* Whole cell lysate (1.0 mg per IP reaction; 5% of IP loaded) from HEK293T cells prepared using NETN lysis buffer. *Antibodies:* Affinity purified rabbit anti-BRG1/SMARCA4 antibody (A300-813A lot 5) used for IP at 6 µg per reaction. BRG1/SMARCA4 was also immunoprecipitated by a previous lot of this antibody (A300-813A lot 4) and another antibody against a different epitope of BRG1/SMARCA4 (A300-877A). For blotting immunoprecipitated BRG1/SMARCA4, A300-813A was used at 0.04 µg/ml. *Detection:* Chemiluminescence with an exposure time of 10 seconds.



**Detection of human BRG1/SMARCA4 by immunohistochemistry.** *Sample:* FFPE section of human ovarian carcinoma. *Antibody:* Affinity purified rabbit anti-BRG1/SMARCA4 (Cat. No. A300-813A lot 4) used at a dilution of 1:1,000 (0.2µg/ml). *Detection:* DAB



**Detection of mouse BRG1/SMARCA4 by immunohistochemistry.** *Sample:* FFPE section of mouse renal cell carcinoma. *Antibody:* Affinity purified rabbit anti-BRG1/SMARCA4 (Cat. No. A300-813A lot 4) used at a dilution of 1:1,000 (0.2µg/ml). *Detection:* DAB